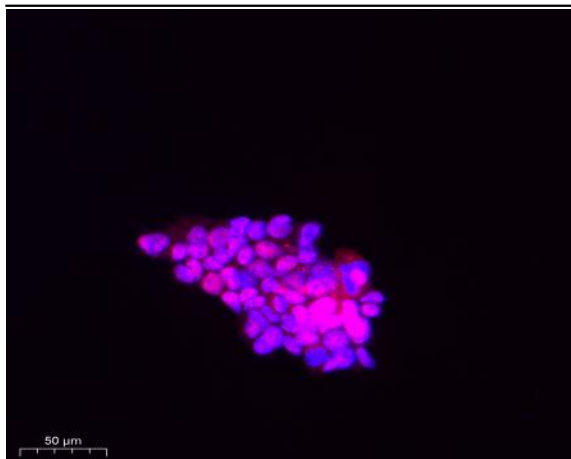


## UBA2 Polyclonal Antibody

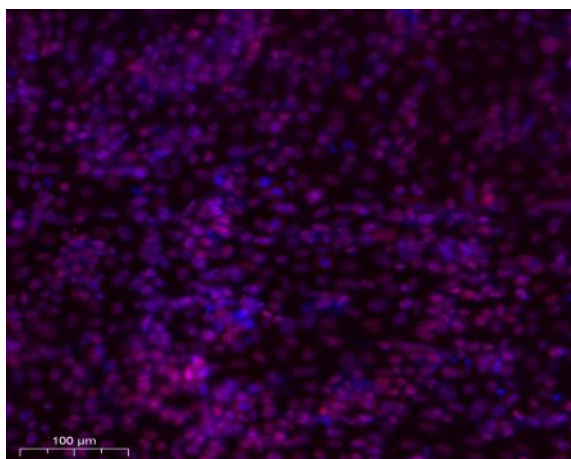
<b>Catalog No :</b>	YT4794
<b>Reactivity :</b>	Human;Mouse
<b>Applications :</b>	WB;IHC;IF;ELISA
<b>Target :</b>	UBA2
<b>Fields :</b>	>>Ubiquitin mediated proteolysis
<b>Gene Name :</b>	UBA2
<b>Protein Name :</b>	SUMO-activating enzyme subunit 2
<b>Human Gene Id :</b>	10054
<b>Human Swiss Prot No :</b>	Q9UBT2
<b>Mouse Swiss Prot No :</b>	Q9Z1F9
<b>Immunogen :</b>	The antiserum was produced against synthesized peptide derived from human Uba2. AA range:591-640
<b>Specificity :</b>	UBA2 Polyclonal Antibody detects endogenous levels of UBA2 protein.
<b>Formulation :</b>	Liquid in PBS containing 50% glycerol, 0.5% BSA and 0.02% sodium azide.
<b>Source :</b>	Polyclonal, Rabbit,IgG
<b>Dilution :</b>	WB 1:500 - 1:2000. IHC 1:100 - 1:300. IF 1:200 - 1:1000. ELISA: 1:10000. Not yet tested in other applications.
<b>Purification :</b>	The antibody was affinity-purified from rabbit antiserum by affinity-chromatography using epitope-specific immunogen.
<b>Concentration :</b>	1 mg/ml
<b>Storage Stability :</b>	-15°C to -25°C/1 year(Do not lower than -25°C)

<b>Observed Band :</b>	71kD
<b>Cell Pathway :</b>	Ubiquitin mediated proteolysis;
<b>Background :</b>	Posttranslational modification of proteins by the addition of the small protein SUMO (see SUMO1; MIM 601912), or sumoylation, regulates protein structure and intracellular localization. SAE1 (MIM 613294) and UBA2 form a heterodimer that functions as a SUMO-activating enzyme for the sumoylation of proteins (Okuma et al., 1999 [PubMed 9920803]).[supplied by OMIM, Mar 2010],
<b>Function :</b>	function:The dimeric enzyme acts as a E1 ligase for SUMO1, SUMO2, SUMO3, and probably SUMO4. It mediates ATP-dependent activation of SUMO proteins and formation of a thioester with a conserved cysteine residue on SAE2.,pathway:Protein modification; protein sumoylation.,similarity:Belongs to the ubiquitin-activating E1 family.,subunit:Heterodimer of SAE1 and SAE2. The complex binds SUMO proteins via SAE2.,
<b>Subcellular Location :</b>	Cytoplasm. Nucleus. Shuttles between the cytoplasm and the nucleus, sumoylation is required either for nuclear translocation or nuclear retention.
<b>Expression :</b>	Brain,Cervix carcinoma,Fetal brain,Placenta,Skin,Testis,
<b>Tag :</b>	orthogonal
<b>Sort :</b>	23844
<b>No4 :</b>	1
<b>Host :</b>	Rabbit
<b>Modifications :</b>	Unmodified

## Products Images



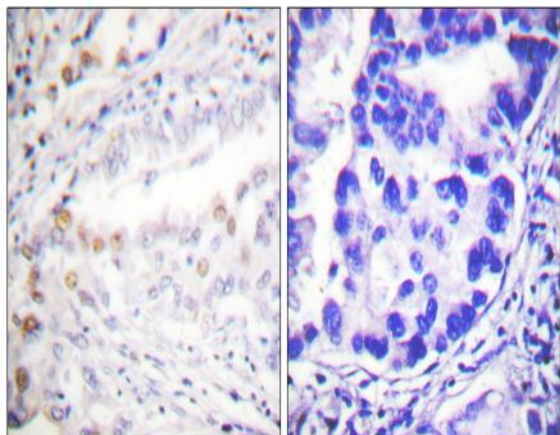
Immunofluorescence analysis of Caco2 cell. 1,primary Antibody was diluted at 1:100(4°C overnight). 2, Goat Anti Rabbit IgG (H&L) - AFfluor 594 Secondary antibody(catalog No: RS3611) was diluted at 1:500(room temperature, 50min).



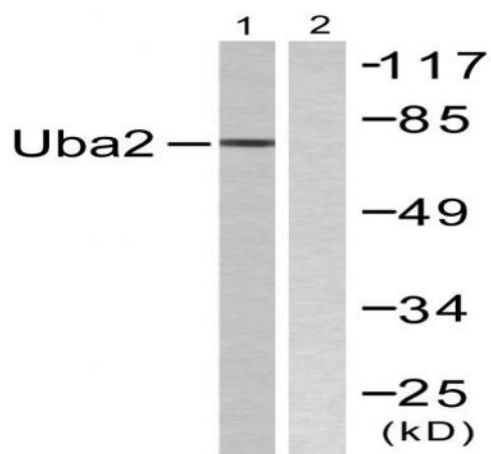
Immunofluorescence analysis of Siha cell. 1,primary Antibody was diluted at 1:100(4°C overnight). 2, Goat Anti Rabbit IgG (H&L) - AFfluor 594 Secondary antibody(catalog No: RS3611) was diluted at 1:500(room temperature, 50min).



Western Blot analysis of various cells using UBA2 Polyclonal Antibody. Secondary antibody(catalog#:RS0002) was diluted at 1:20000 cells nucleus extracted by Minute TM Cytoplasmic and Nuclear Fractionation kit (SC-003, Inventbiotech, MN, USA).



Immunohistochemistry analysis of paraffin-embedded human lung carcinoma tissue, using Uba2 Antibody. The picture on the right is blocked with the synthesized peptide.



Western blot analysis of lysates from 293 cells, treated with UV 5', using Uba2 Antibody. The lane on the right is blocked with the synthesized peptide.