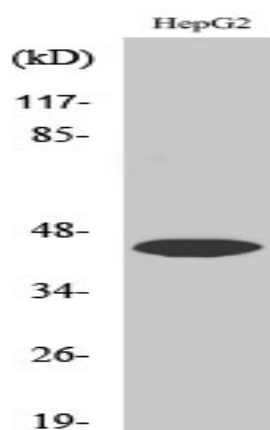


## Uba5 Polyclonal Antibody

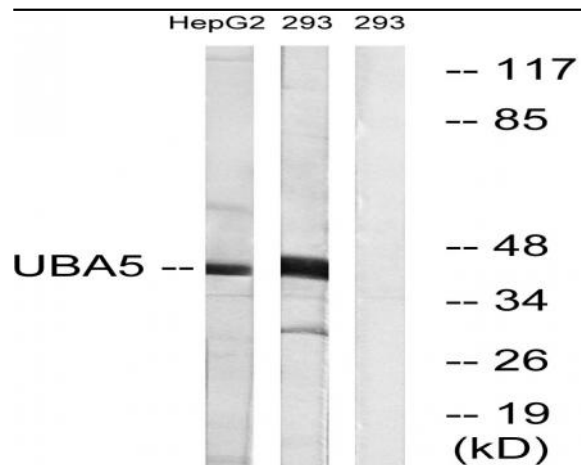
<b>Catalog No :</b>	YT4795
<b>Reactivity :</b>	Human;Mouse;Rat
<b>Applications :</b>	WB;IHC;IF;ELISA
<b>Target :</b>	Uba5
<b>Gene Name :</b>	UBA5
<b>Protein Name :</b>	Ubiquitin-like modifier-activating enzyme 5
<b>Human Gene Id :</b>	79876
<b>Human Swiss Prot No :</b>	Q9GZZ9
<b>Mouse Gene Id :</b>	66663
<b>Mouse Swiss Prot No :</b>	Q8VE47
<b>Rat Gene Id :</b>	300968
<b>Rat Swiss Prot No :</b>	Q5M7A4
<b>Immunogen :</b>	The antiserum was produced against synthesized peptide derived from human UBA5. AA range:281-330
<b>Specificity :</b>	Uba5 Polyclonal Antibody detects endogenous levels of Uba5 protein.
<b>Formulation :</b>	Liquid in PBS containing 50% glycerol, 0.5% BSA and 0.02% sodium azide.
<b>Source :</b>	Polyclonal, Rabbit,IgG
<b>Dilution :</b>	WB 1:500 - 1:2000. IHC 1:100 - 1:300. ELISA: 1:5000.. IF 1:50-200
<b>Purification :</b>	The antibody was affinity-purified from rabbit antiserum by affinity-chromatography using epitope-specific immunogen.

<b>Concentration :</b>	1 mg/ml
<b>Storage Stability :</b>	-15°C to -25°C/1 year(Do not lower than -25°C)
<b>Observed Band :</b>	45kD
<b>Background :</b>	This gene encodes a member of the E1-like ubiquitin-activating enzyme family. This protein activates ubiquitin-fold modifier 1, a ubiquitin-like post-translational modifier protein, via the formation of a high-energy thioester bond. Alternative splicing results in multiple transcript variants. A pseudogene of this gene has been identified on chromosome 1. [provided by RefSeq, Feb 2016],
<b>Function :</b>	function:E1-like enzyme which activates UFM1.,similarity:Belongs to the ubiquitin-activating E1 family. UBA5 subfamily.,
<b>Subcellular Location :</b>	Cytoplasm . Nucleus . Endoplasmic reticulum membrane . Golgi apparatus . Localizes mainly in the cytoplasm, while it localizes to the nucleus in presence of SUMO2 (PubMed:18442052). Interaction with GABARAPL2 promotes localization to the endoplasmic reticulum membrane (PubMed:30990354). .
<b>Expression :</b>	Widely expressed.
<b>Sort :</b>	23846
<b>No4 :</b>	1
<b>Host :</b>	Rabbit
<b>Modifications :</b>	Unmodified

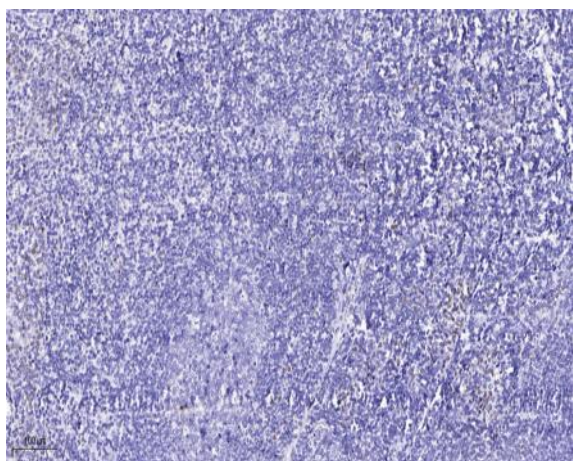
## Products Images



Western Blot analysis of various cells using Uba5 Polyclonal Antibody. Secondary antibody(catalog#:RS0002) was diluted at 1:20000



Western blot analysis of lysates from HepG2 and 293 cells, using UBA5 Antibody. The lane on the right is blocked with the synthesized peptide.



Immunohistochemical analysis of paraffin-embedded human tonsil. 1, Antibody was diluted at 1:200(4° overnight). 2, Tris-EDTA,pH9.0 was used for antigen retrieval. 3,Secondary antibody was diluted at 1:200(room temperature, 45min).