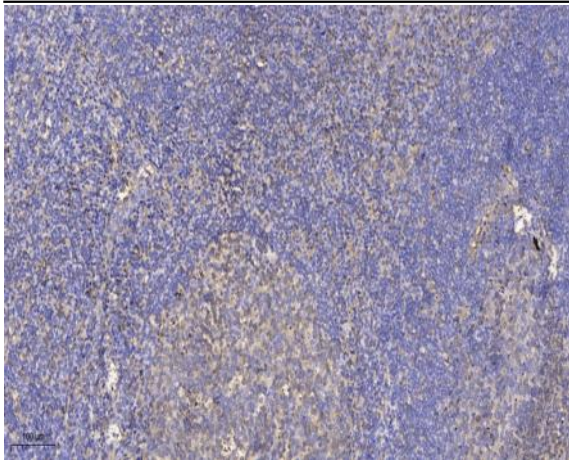


UBE2G1 Polyclonal Antibody

Catalog No :	YT4799
Reactivity :	Human;Mouse;Rat
Applications :	IHC;IF;ELISA
Target :	UBE2G1
Fields :	>>Ubiquitin mediated proteolysis;>>Protein processing in endoplasmic reticulum;>>Parkinson disease;>>Pathways of neurodegeneration - multiple diseases
Gene Name :	UBE2G1
Protein Name :	Ubiquitin-conjugating enzyme E2 G1
Human Gene Id :	7326
Human Swiss Prot No :	P62253
Mouse Gene Id :	67128
Mouse Swiss Prot No :	P62254
Rat Gene Id :	64631
Rat Swiss Prot No :	P62255
Immunogen :	Synthesized peptide derived from the Internal region of human UBE2G1.
Specificity :	UBE2G1 Polyclonal Antibody detects endogenous levels of UBE2G1 protein.
Formulation :	Liquid in PBS containing 50% glycerol, 0.5% BSA and 0.02% sodium azide.
Source :	Polyclonal, Rabbit,IgG
Dilution :	IHC 1:100 - 1:300. ELISA: 1:40000.. IF 1:50-200

Purification :	The antibody was affinity-purified from rabbit antiserum by affinity-chromatography using epitope-specific immunogen.
Concentration :	1 mg/ml
Storage Stability :	-15°C to -25°C/1 year(Do not lower than -25°C)
Molecularweight :	20kD
Cell Pathway :	Ubiquitin mediated proteolysis;Parkinson's disease;
Background :	The modification of proteins with ubiquitin is an important cellular mechanism for targeting abnormal or short-lived proteins for degradation. Ubiquitination involves at least three classes of enzymes: ubiquitin-activating enzymes, or E1s, ubiquitin-conjugating enzymes, or E2s, and ubiquitin-protein ligases, or E3s. This gene encodes a member of the E2 ubiquitin-conjugating enzyme family and catalyzes the covalent attachment of ubiquitin to other proteins. The protein may be involved in degradation of muscle-specific proteins. [provided by RefSeq, Jul 2008],
Function :	catalytic activity:ATP + ubiquitin + protein lysine = AMP + diphosphate + protein N-ubiquityllysine.,function:Catalyzes the covalent attachment of ubiquitin to other proteins. May be involved in degradation of muscle-specific proteins.,pathway:Protein modification; protein ubiquitination.,similarity:Belongs to the ubiquitin-conjugating enzyme family.,tissue specificity:Widely expressed, mainly in skeletal muscle.,
Subcellular Location :	cytoplasm,extracellular exosome,
Expression :	Widely expressed, mainly in skeletal muscle.
Sort :	23860
No4 :	1
Host :	Rabbit
Modifications :	Unmodified

Products Images



Immunohistochemical analysis of paraffin-embedded human tonsil. 1, Antibody was diluted at 1:200(4 ° overnight). 2, Tris-EDTA,pH9.0 was used for antigen retrieval. 3,Secondary antibody was diluted at 1:200(room temperature, 30min).