

UBE2T Polyclonal Antibody

| | |
|------------------------------|---|
| Catalog No : | YT4800 |
| Reactivity : | Human;Mouse |
| Applications : | WB;ELISA |
| Target : | UBE2T |
| Fields : | >>Fanconi anemia pathway |
| Gene Name : | UBE2T |
| Protein Name : | Ubiquitin-conjugating enzyme E2 T |
| Human Gene Id : | 29089 |
| Human Swiss Prot No : | Q9NPD8 |
| Mouse Gene Id : | 67196 |
| Mouse Swiss Prot No : | Q9CQ37 |
| Immunogen : | The antiserum was produced against synthesized peptide derived from human UBE2T. AA range:121-170 |
| Specificity : | UBE2T Polyclonal Antibody detects endogenous levels of UBE2T protein. |
| Formulation : | Liquid in PBS containing 50% glycerol, 0.5% BSA and 0.02% sodium azide. |
| Source : | Polyclonal, Rabbit,IgG |
| Dilution : | WB 1:500 - 1:2000. ELISA: 1:10000. Not yet tested in other applications. |
| Purification : | The antibody was affinity-purified from rabbit antiserum by affinity-chromatography using epitope-specific immunogen. |
| Concentration : | 1 mg/ml |

Storage Stability : -15°C to -25°C/1 year(Do not lower than -25°C)

Observed Band : 22kD

Background : The protein encoded by this gene catalyzes the covalent attachment of ubiquitin to protein substrates. Defects in this gene have been associated with Fanconi anemia of complementation group T. Two transcript variants encoding different isoforms have been found for this gene. [provided by RefSeq, Jul 2015],

Function : catalytic activity:ATP + ubiquitin + protein lysine = AMP + diphosphate + protein N-ubiquityllysine.,function:Catalyzes the covalent attachment of ubiquitin to other proteins.,pathway:Protein modification; protein ubiquitination.,similarity:Belongs to the ubiquitin-conjugating enzyme family.,

Subcellular Location : Nucleus . Accumulates to chromatin.

Expression : Adrenal gland,Blood,Carcinoma,Lung,

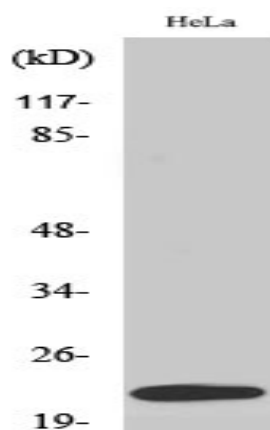
Sort : 23865

No4 : 1

Host : Rabbit

Modifications : Unmodified

Products Images



Western Blot analysis of various cells using UBE2T Polyclonal Antibody. Secondary antibody(catalog#:RS0002) was diluted at 1:20000