

**UBE3B Polyclonal Antibody**

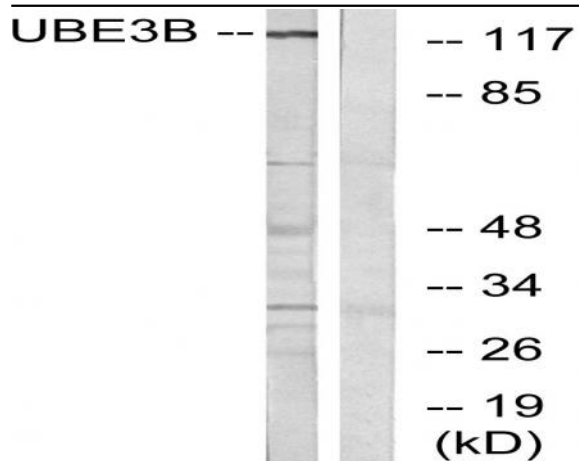
<b>Catalog No :</b>	YT4801
<b>Reactivity :</b>	Human;Mouse
<b>Applications :</b>	WB;IHC;IF;ELISA
<b>Target :</b>	UBE3B
<b>Fields :</b>	>>Ubiquitin mediated proteolysis
<b>Gene Name :</b>	UBE3B
<b>Protein Name :</b>	Ubiquitin-protein ligase E3B
<b>Human Gene Id :</b>	89910
<b>Human Swiss Prot No :</b>	Q7Z3V4
<b>Mouse Swiss Prot No :</b>	Q9ES34
<b>Immunogen :</b>	The antiserum was produced against synthesized peptide derived from human UBE3B. AA range:581-630
<b>Specificity :</b>	UBE3B Polyclonal Antibody detects endogenous levels of UBE3B protein.
<b>Formulation :</b>	Liquid in PBS containing 50% glycerol, 0.5% BSA and 0.02% sodium azide.
<b>Source :</b>	Polyclonal, Rabbit,IgG
<b>Dilution :</b>	WB 1:500 - 1:2000. IHC 1:100 - 1:300. ELISA: 1:10000.. IF 1:50-200
<b>Purification :</b>	The antibody was affinity-purified from rabbit antiserum by affinity-chromatography using epitope-specific immunogen.
<b>Concentration :</b>	1 mg/ml
<b>Storage Stability :</b>	-15°C to -25°C/1 year(Do not lower than -25°C)

---

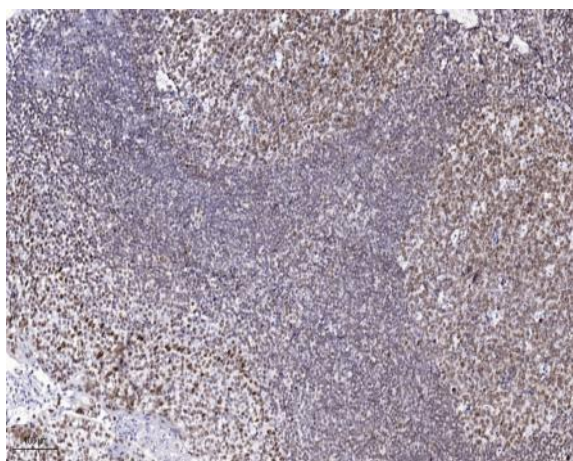
<b>Observed Band :</b>	123kD
<b>Cell Pathway :</b>	Ubiquitin mediated proteolysis;
<b>Background :</b>	<p>The modification of proteins with ubiquitin is an important cellular mechanism for targeting abnormal or short-lived proteins for degradation. Ubiquitination involves at least three classes of enzymes: E1 ubiquitin-activating enzymes, E2 ubiquitin-conjugating enzymes, and E3 ubiquitin-protein ligases. This gene encodes a member of the E3 ubiquitin-conjugating enzyme family which accepts ubiquitin from an E2 ubiquitin-conjugating enzyme and transfers the ubiquitin to the targeted substrates. A HECT (homology to E6-AP C-terminus) domain in the C-terminus of the longer isoform of this protein is the catalytic site of ubiquitin transfer and forms a complex with E2 conjugases. Shorter isoforms of this protein which lack the C-terminal HECT domain are therefore unlikely to bind E2 enzymes. Alternatively spliced transcript variants encoding distinct isoforms have been identified for this gene. [pro</p>
<b>Function :</b>	<p>function:E3 ubiquitin-protein ligase which accepts ubiquitin from an E2 ubiquitin-conjugating enzyme in the form of a thioester and then directly transfers the ubiquitin to targeted substrates.,pathway:Protein modification; protein ubiquitination.,similarity:Contains 1 HECT (E6AP-type E3 ubiquitin-protein ligase) domain.,similarity:Contains 1 IQ domain.,tissue specificity:Widely expressed.,</p>
<b>Subcellular Location :</b>	nucleus,cytoplasm,
<b>Expression :</b>	Widely expressed.
<b>Sort :</b>	23869
<b>No4 :</b>	1
<b>Host :</b>	Rabbit
<b>Modifications :</b>	Unmodified

---

## Products Images



Western blot analysis of lysates from Jurkat cells, using UBE3B Antibody. The lane on the right is blocked with the synthesized peptide.



Immunohistochemical analysis of paraffin-embedded human tonsil. 1, Antibody was diluted at 1:200(4° overnight). 2, Tris-EDTA,pH9.0 was used for antigen retrieval. 3,Secondary antibody was diluted at 1:200(room temperature, 45min).