

**UBTD2 Polyclonal Antibody**

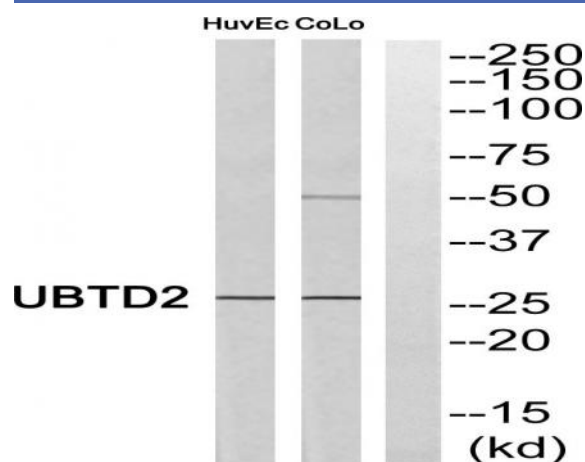
<b>Catalog No :</b>	YT4811
<b>Reactivity :</b>	Human;Mouse
<b>Applications :</b>	WB;ELISA
<b>Target :</b>	UBTD2
<b>Gene Name :</b>	UBTD2
<b>Protein Name :</b>	Ubiquitin domain-containing protein 2
<b>Human Gene Id :</b>	92181
<b>Human Swiss Prot No :</b>	Q8WUN7
<b>Mouse Gene Id :</b>	327900
<b>Mouse Swiss Prot No :</b>	Q6PGH0
<b>Immunogen :</b>	The antiserum was produced against synthesized peptide derived from human UBTD2. AA range:181-230
<b>Specificity :</b>	UBTD2 Polyclonal Antibody detects endogenous levels of UBTD2 protein.
<b>Formulation :</b>	Liquid in PBS containing 50% glycerol, 0.5% BSA and 0.02% sodium azide.
<b>Source :</b>	Polyclonal, Rabbit,IgG
<b>Dilution :</b>	WB 1:500 - 1:2000. ELISA: 1:40000. Not yet tested in other applications.
<b>Purification :</b>	The antibody was affinity-purified from rabbit antiserum by affinity-chromatography using epitope-specific immunogen.
<b>Concentration :</b>	1 mg/ml
<b>Storage Stability :</b>	-15°C to -25°C/1 year(Do not lower than -25°C)

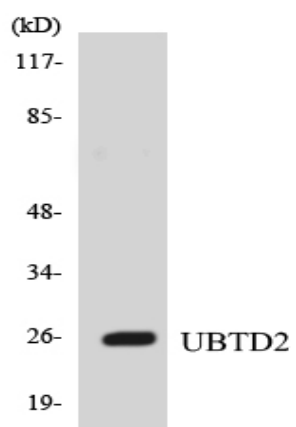
---

<b>Observed Band :</b>	26kD
<b>Background :</b>	similarity:Contains 1 ubiquitin-like domain.,tissue specificity:Detected in dendritic cells. Highly expressed in tumor cell lines, but not detectable in most tissues.,
<b>Function :</b>	similarity:Contains 1 ubiquitin-like domain.,tissue specificity:Detected in dendritic cells. Highly expressed in tumor cell lines, but not detectable in most tissues.,
<b>Subcellular Location :</b>	Cytoplasm .
<b>Expression :</b>	Detected in dendritic cells. Highly expressed in tumor cell lines, but not detectable in most tissues.
<b>Sort :</b>	23917
<b>No4 :</b>	1
<b>Host :</b>	Rabbit
<b>Modifications :</b>	Unmodified

---

## Products Images





Western blot analysis of the lysates from HUVEC cells using UBTD2 antibody.