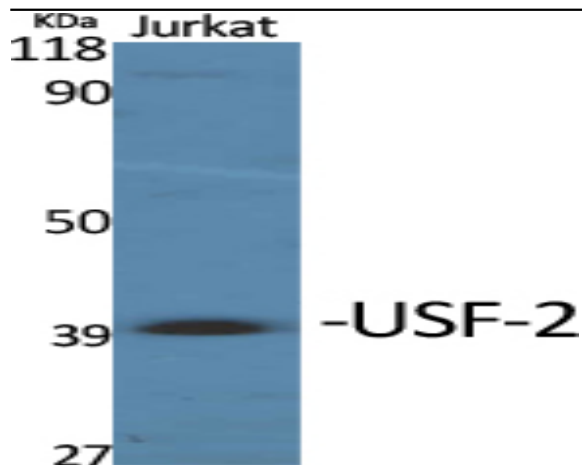


USF-2 Polyclonal Antibody

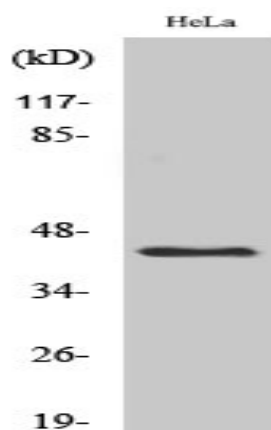
Catalog No :	YT4827
Reactivity :	Human;Mouse;Rat
Applications :	WB;IHC;IF;ELISA
Target :	USF-2
Gene Name :	USF2
Protein Name :	Upstream stimulatory factor 2
Human Gene Id :	7392
Human Swiss Prot No :	Q15853
Mouse Gene Id :	22282
Mouse Swiss Prot No :	Q64705
Rat Gene Id :	81817
Rat Swiss Prot No :	Q63665
Immunogen :	The antiserum was produced against synthesized peptide derived from human USF2. AA range:196-245
Specificity :	USF-2 Polyclonal Antibody detects endogenous levels of USF-2 protein.
Formulation :	Liquid in PBS containing 50% glycerol, 0.5% BSA and 0.02% sodium azide.
Source :	Polyclonal, Rabbit,IgG
Dilution :	WB 1:500 - 1:2000. IHC 1:100 - 1:300. ELISA: 1:20000.. IF 1:50-200
Purification :	The antibody was affinity-purified from rabbit antiserum by affinity-chromatography using epitope-specific immunogen.

Concentration :	1 mg/ml
Storage Stability :	-15°C to -25°C/1 year(Do not lower than -25°C)
Observed Band :	40kD
Background :	This gene encodes a member of the basic helix-loop-helix leucine zipper family of transcription factors. The encoded protein can activate transcription through pyrimidine-rich initiator (Inr) elements and E-box motifs and is involved in regulating multiple cellular processes. [provided by RefSeq, Mar 2016],
Function :	alternative products:Additional isoforms seem to exist,function:Transcription factor that binds to a symmetrical DNA sequence (E-boxes) (5'-CACGTG-3') that is found in a variety of viral and cellular promoters.,similarity:Contains 1 basic helix-loop-helix (bHLH) domain.,subunit:Interacts with MAF (By similarity). Efficient DNA binding requires dimerization with another bHLH protein. Binds DNA as an homodimer or a heterodimer (USF1/USF2). In vivo, the USF1/USF2A heterodimer represents over 66% of the usf binding activity whereas the USF1 and USF2A homodimers represent less than 10%. The USF1/USF2B heterodimer accounted for almost 15% in some cell.,tissue specificity:Ubiquitous.,
Subcellular Location :	Nucleus.
Expression :	Ubiquitous.
Sort :	23998
No4 :	1
Host :	Rabbit
Modifications :	Unmodified

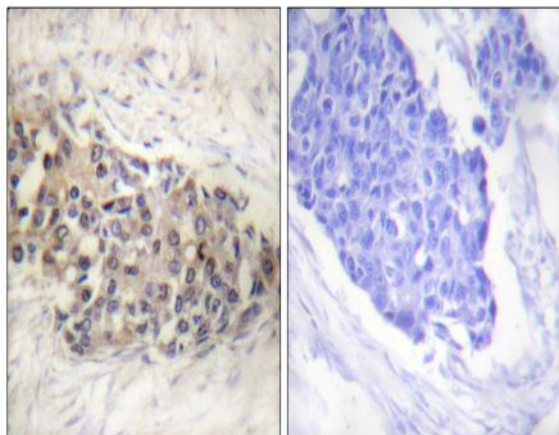
Products Images



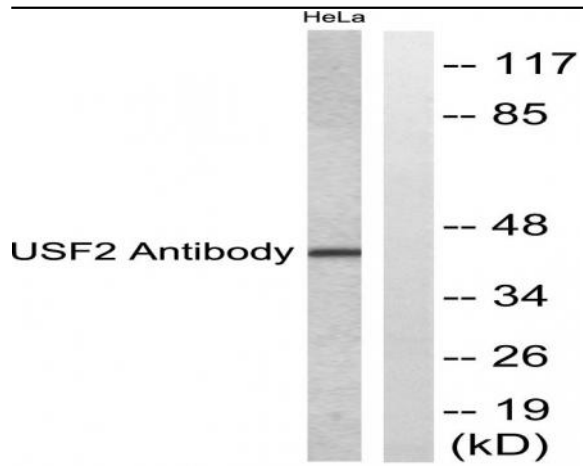
Western Blot analysis of various cells using USF-2 Polyclonal Antibody. Secondary antibody(catalog#:RS0002) was diluted at 1:20000 cells nucleus extracted by Minute TM Cytoplasmic and Nuclear Fractionation kit (SC-003, Inventbiotech, MN, USA).



Western Blot analysis of HeLa cells using USF-2 Polyclonal Antibody. Secondary antibody(catalog#:RS0002) was diluted at 1:20000 cells nucleus extracted by Minute TM Cytoplasmic and Nuclear Fractionation kit (SC-003, Inventbiotech, MN, USA).



Immunohistochemistry analysis of paraffin-embedded human breast carcinoma tissue, using USF2 Antibody. The picture on the right is blocked with the synthesized peptide.



Western blot analysis of lysates from HeLa cells, using USF2 Antibody. The lane on the right is blocked with the synthesized peptide.