

USP32 Polyclonal Antibody

Catalog No :	YT4835
Reactivity :	Human;Mouse
Applications :	IHC;IF;WB;ELISA
Target :	USP32
Gene Name :	USP32
Protein Name :	Ubiquitin carboxyl-terminal hydrolase 32
Human Gene Id :	84669
Human Swiss Prot No :	Q8NFA0
Immunogen :	The antiserum was produced against synthesized peptide derived from human USP32. AA range:271-320
Specificity :	USP32 Polyclonal Antibody detects endogenous levels of USP32 protein.
Formulation :	Liquid in PBS containing 50% glycerol, 0.5% BSA and 0.02% sodium azide.
Source :	Polyclonal, Rabbit,IgG
Dilution :	WB 1:500-2000 IHC 1:100 - 1:300. ELISA: 1:40000.. IF 1:50-200
Purification :	The antibody was affinity-purified from rabbit antiserum by affinity-chromatography using epitope-specific immunogen.
Concentration :	1 mg/ml
Storage Stability :	-15°C to -25°C/1 year(Do not lower than -25°C)
Observed Band :	180kD
Background :	catalytic activity:Ubiquitin C-terminal thioester + H(2)O = ubiquitin + a thiol.,similarity:Belongs to the peptidase C19 family.,similarity:Contains 1 DUSP

domain.,similarity:Contains 3 EF-hand domains.,

Function :

catalytic activity:Ubiquitin C-terminal thioester + H(2)O = ubiquitin + a thiol.,similarity:Belongs to the peptidase C19 family.,similarity:Contains 1 DUSP domain.,similarity:Contains 3 EF-hand domains.,

Subcellular Location :

Membrane ; Lipid-anchor . Golgi apparatus .

Expression :

Brain,Epithelium,Peripheral Nervous System,Skin,Testis,Uterus,

Sort :

24007

No4 :

1

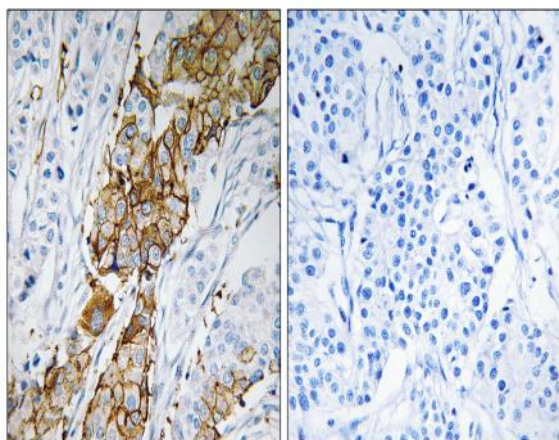
Host :

Rabbit

Modifications :

Unmodified

Products Images



Immunohistochemistry analysis of paraffin-embedded human breast carcinoma tissue, using USP32 Antibody. The picture on the right is blocked with the synthesized peptide.