

USP36 Polyclonal Antibody

Catalog No :	YT4836
Reactivity :	Human;Mouse
Applications :	WB;IHC;IF;ELISA
Target :	USP36
Gene Name :	USP36
Protein Name :	Ubiquitin carboxyl-terminal hydrolase 36
Human Gene Id :	57602
Human Swiss Prot No :	Q9P275
Mouse Swiss Prot No :	B1AQJ2
Immunogen :	The antiserum was produced against synthesized peptide derived from human USP36. AA range:501-550
Specificity :	USP36 Polyclonal Antibody detects endogenous levels of USP36 protein.
Formulation :	Liquid in PBS containing 50% glycerol, 0.5% BSA and 0.02% sodium azide.
Source :	Polyclonal, Rabbit,IgG
Dilution :	WB 1:500 - 1:2000. IHC 1:100 - 1:300. ELISA: 1:40000.. IF 1:50-200
Purification :	The antibody was affinity-purified from rabbit antiserum by affinity-chromatography using epitope-specific immunogen.
Concentration :	1 mg/ml
Storage Stability :	-15°C to -25°C/1 year(Do not lower than -25°C)
Observed Band :	125kD

Background : This gene encodes a member of the peptidase C19 or ubiquitin-specific protease family of cysteine proteases. Members of this family remove ubiquitin molecules from polyubiquitinated proteins. The encoded protein may deubiquitinate and stabilize the transcription factor c-Myc, also known as MYC, an important oncoprotein known to be upregulated in most human cancers. The encoded protease may also regulate the activation of autophagy. This gene exhibits elevated expression in some breast and lung cancers. [provided by RefSeq, Mar 2016],

Function : catalytic activity:Ubiquitin C-terminal thioester + H(2)O = ubiquitin + a thiol.,similarity:Belongs to the peptidase C19 family.,tissue specificity:Broadly expressed.,

Subcellular Location : Nucleus, nucleolus . Cytoplasm .

Expression : Broadly expressed.

Tag : hot

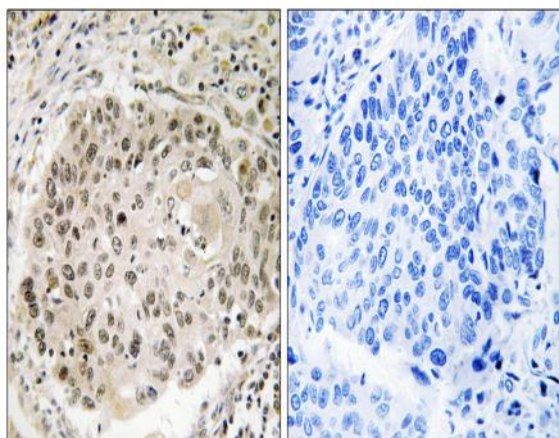
Sort : 24008

No4 : 1

Host : Rabbit

Modifications : Unmodified

Products Images



Immunohistochemistry analysis of paraffin-embedded human lung carcinoma, using USP36 Antibody. The picture on the right is blocked with the synthesized peptide.