

## USP40 Polyclonal Antibody

<b>Catalog No :</b>	YT4838
<b>Reactivity :</b>	Human;Mouse
<b>Applications :</b>	WB;IHC;IF;ELISA
<b>Target :</b>	USP40
<b>Gene Name :</b>	USP40
<b>Protein Name :</b>	Ubiquitin carboxyl-terminal hydrolase 40
<b>Human Gene Id :</b>	55230
<b>Human Swiss Prot No :</b>	Q9NVE5
<b>Mouse Swiss Prot No :</b>	Q8BWR4
<b>Immunogen :</b>	The antiserum was produced against synthesized peptide derived from human USP40. AA range:1011-1060
<b>Specificity :</b>	USP40 Polyclonal Antibody detects endogenous levels of USP40 protein.
<b>Formulation :</b>	Liquid in PBS containing 50% glycerol, 0.5% BSA and 0.02% sodium azide.
<b>Source :</b>	Polyclonal, Rabbit,IgG
<b>Dilution :</b>	WB 1:500 - 1:2000. IHC 1:100 - 1:300. ELISA: 1:20000.. IF 1:50-200
<b>Purification :</b>	The antibody was affinity-purified from rabbit antiserum by affinity-chromatography using epitope-specific immunogen.
<b>Concentration :</b>	1 mg/ml
<b>Storage Stability :</b>	-15°C to -25°C/1 year(Do not lower than -25°C)
<b>Observed Band :</b>	140kD

**Background :** Modification of cellular proteins by ubiquitin is an essential regulatory mechanism controlled by the coordinated action of multiple ubiquitin-conjugating and deubiquitinating enzymes. USP40 belongs to a large family of cysteine proteases that function as deubiquitinating enzymes (Quesada et al., 2004 [PubMed 14715245]).[supplied by OMIM, Mar 2008],

**Function :** catalytic activity:Ubiquitin C-terminal thioester + H(2)O = ubiquitin + a thiol.,function:May be catalytically inactive.,similarity:Belongs to the peptidase C19 family.,tissue specificity:Broadly expressed.,

**Subcellular Location :** nucleus,cytoplasm,

**Expression :** Broadly expressed.

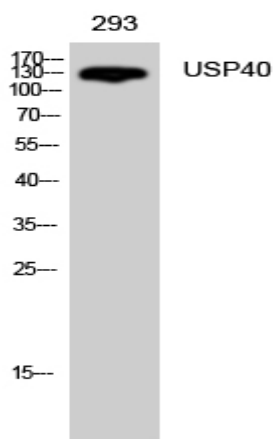
**Sort :** 24010

**No4 :** 1

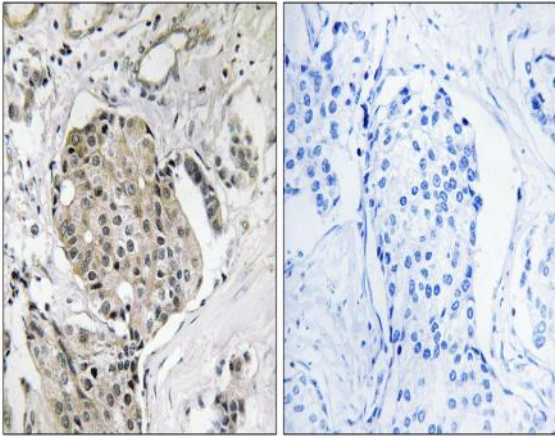
**Host :** Rabbit

**Modifications :** Unmodified

## Products Images



Western Blot analysis of 293 cells using USP40 Polyclonal Antibody diluted at 1:500. Secondary antibody(catalog#:RS0002) was diluted at 1:20000



Immunohistochemistry analysis of paraffin-embedded human breast carcinoma, using USP40 Antibody. The picture on the right is blocked with the synthesized peptide.