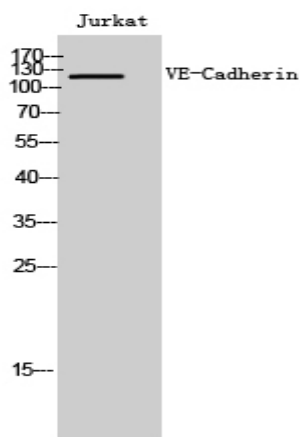


## VE-Cadherin Polyclonal Antibody

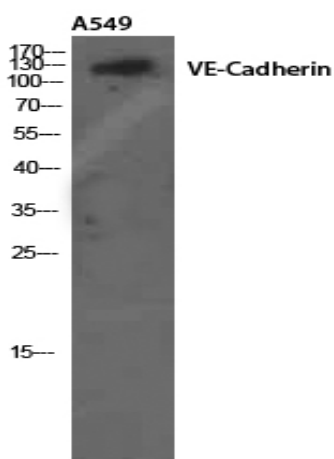
<b>Catalog No :</b>	YT4869
<b>Reactivity :</b>	Human;Mouse
<b>Applications :</b>	WB;IHC;IF;ELISA
<b>Target :</b>	VE-Cadherin
<b>Fields :</b>	>>Cell adhesion molecules;>>Leukocyte transendothelial migration;>>Fluid shear stress and atherosclerosis
<b>Gene Name :</b>	CDH5
<b>Protein Name :</b>	Cadherin-5
<b>Human Gene Id :</b>	1003
<b>Human Swiss Prot No :</b>	P33151
<b>Mouse Gene Id :</b>	12562
<b>Mouse Swiss Prot No :</b>	P55284
<b>Immunogen :</b>	The antiserum was produced against synthesized peptide derived from human CDH5. AA range:697-746
<b>Specificity :</b>	VE-Cadherin Polyclonal Antibody detects endogenous levels of VE-Cadherin protein.
<b>Formulation :</b>	Liquid in PBS containing 50% glycerol, 0.5% BSA and 0.02% sodium azide.
<b>Source :</b>	Polyclonal, Rabbit,IgG
<b>Dilution :</b>	WB 1:500 - 1:2000. IHC 1:100 - 1:300. ELISA: 1:40000.. IF 1:50-200
<b>Purification :</b>	The antibody was affinity-purified from rabbit antiserum by affinity-chromatography using epitope-specific immunogen.

<b>Concentration :</b>	1 mg/ml
<b>Storage Stability :</b>	-15°C to -25°C/1 year(Do not lower than -25°C)
<b>Observed Band :</b>	120kD
<b>Cell Pathway :</b>	Cell adhesion molecules (CAMs);Leukocyte transendothelial migration;
<b>Background :</b>	<p>This gene encodes a classical cadherin of the cadherin superfamily. The encoded preproprotein is proteolytically processed to generate the mature glycoprotein. This calcium-dependent cell-cell adhesion molecule is comprised of five extracellular cadherin repeats, a transmembrane region and a highly conserved cytoplasmic tail. Functioning as a classical cadherin by imparting to cells the ability to adhere in a homophilic manner, this protein plays a role in endothelial adherens junction assembly and maintenance. This gene is located in a gene cluster in a region on the long arm of chromosome 16 that is involved in loss of heterozygosity events in breast and prostate cancer. [provided by RefSeq, Nov 2015],</p>
<b>Function :</b>	<p>function:Cadherins are calcium dependent cell adhesion proteins.,function:Cadherins are calcium dependent cell adhesion proteins. They preferentially interact with themselves in a homophilic manner in connecting cells; cadherins may thus contribute to the sorting of heterogeneous cell types. This cadherin may play a important role in endothelial cell biology through control of the cohesion and organization of the intercellular junctions. It associates with alpha-catenin forming a link to the cytoskeleton.,similarity:Contains 5 cadherin domains.,subcellular location:Found at cell-cell boundaries and probably at cell-matrix boundaries.,tissue specificity:Endothelial tissues and brain.,</p>
<b>Subcellular Location :</b>	Cell junction . Cell membrane ; Single-pass type I membrane protein . Found at cell-cell boundaries and probably at cell-matrix boundaries. KRIT1 and CDH5 reciprocally regulate their localization to endothelial cell-cell junctions. .
<b>Expression :</b>	Endothelial tissues and brain.
<b>Tag :</b>	orthogonal,hot
<b>Sort :</b>	1
<b>No4 :</b>	1
<b>Host :</b>	Rabbit
<b>Modifications :</b>	Unmodified

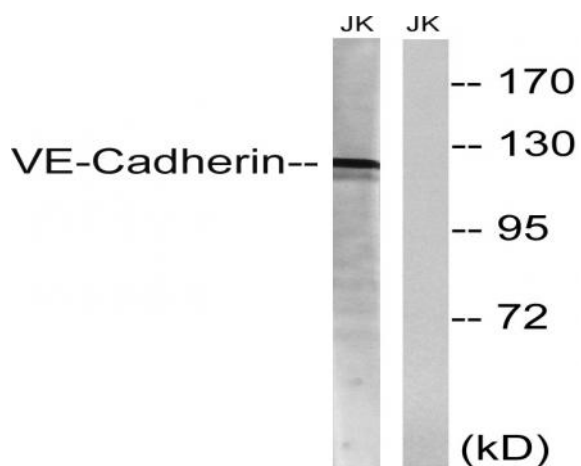
## Products Images



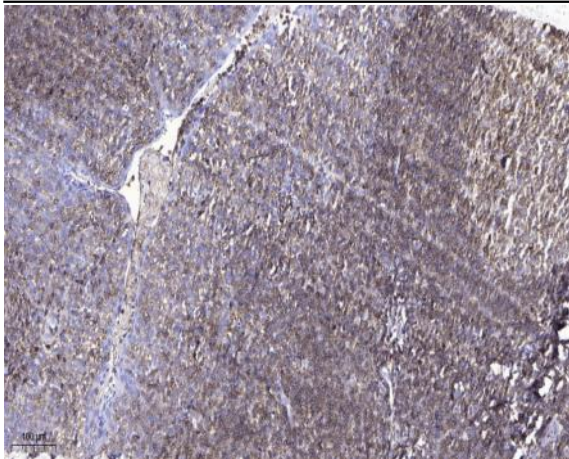
Western Blot analysis of Jurkat cells using VE-Cadherin Polyclonal Antibody diluted at 1:2000. Secondary antibody(catalog#:RS0002) was diluted at 1:20000



Western Blot analysis of A549 using VE-Cadherin Polyclonal Antibody. Antibody was diluted at 1:2000. Secondary antibody(catalog#:RS0002) was diluted at 1:20000



Western blot analysis of lysates from Jurkat cells, using VE-Cadherin Antibody. The lane on the right is blocked with the synthesized peptide.



Immunohistochemical analysis of paraffin-embedded human tonsil. 1, Antibody was diluted at 1:200(4° overnight). 2, Tris-EDTA,pH9.0 was used for antigen retrieval. 3,Secondary antibody was diluted at 1:200(room temperature, 45min).