

WWOX Polyclonal Antibody

Catalog No :	YT4909
Reactivity :	Human;Mouse
Applications :	WB;IHC;IF;ELISA
Target :	WWOX
Gene Name :	WWOX
Protein Name :	WW domain-containing oxidoreductase
Human Gene Id :	51741
Human Swiss Prot No :	Q9NZC7
Mouse Gene Id :	80707
Mouse Swiss Prot No :	Q91WL8
Immunogen :	The antiserum was produced against synthesized peptide derived from human WWOX. AA range:1-50
Specificity :	WWOX Polyclonal Antibody detects endogenous levels of WWOX protein.
Formulation :	Liquid in PBS containing 50% glycerol, 0.5% BSA and 0.02% sodium azide.
Source :	Polyclonal, Rabbit,IgG
Dilution :	WB 1:500 - 1:2000. IHC 1:100 - 1:300. IF 1:200 - 1:1000. ELISA: 1:20000. Not yet tested in other applications.
Purification :	The antibody was affinity-purified from rabbit antiserum by affinity-chromatography using epitope-specific immunogen.
Concentration :	1 mg/ml
Storage Stability :	-15°C to -25°C/1 year(Do not lower than -25°C)

Observed Band : 47kD

Background : WWOX (WW domain containing oxidoreductase) encodes a member of the short-chain dehydrogenases/reductases (SDR) protein family. WWOX spans the FRA16D common chromosomal fragile site and appears to function as a tumor suppressor gene. Expression of the encoded protein is able to induce apoptosis, while defects in this gene are associated with multiple types of cancer. Disruption of WWOX is also associated with autosomal recessive spinocerebellar ataxia 12. Disruption of a similar gene in mouse results in impaired steroidogenesis, additionally suggesting a metabolic function for the protein. Alternative splicing results in multiple transcript variants.

Function : skeletal system development, ossification, osteoblast differentiation, induction of apoptosis, steroid metabolic process, negative regulation of signal transduction, negative regulation of cell communication, regulation of cell death, positive regulation of cell death, induction of programmed cell death, regulation of Wnt receptor signaling pathway, negative regulation of Wnt receptor signaling pathway, regulation of apoptosis, positive regulation of apoptosis, regulation of programmed cell death, positive regulation of programmed cell death, skeletal system morphogenesis, oxidation reduction, bone development,

Subcellular Location : Cytoplasm . Nucleus . Mitochondrion . Golgi apparatus . Partially localizes to the mitochondria (PubMed:14695174). Translocates to the nucleus upon genotoxic stress or TNF stimulation (By similarity). Translocates to the nucleus in response to TGFB1 (PubMed:19366691). Isoform 5 and isoform 6 may localize in the nucleus. .

Expression : Widely expressed. Strongly expressed in testis, prostate, and ovary. Overexpressed in cancer cell lines. Isoform 5 and isoform 6 may only be expressed in tumor cell lines.

Tag : orthogonal

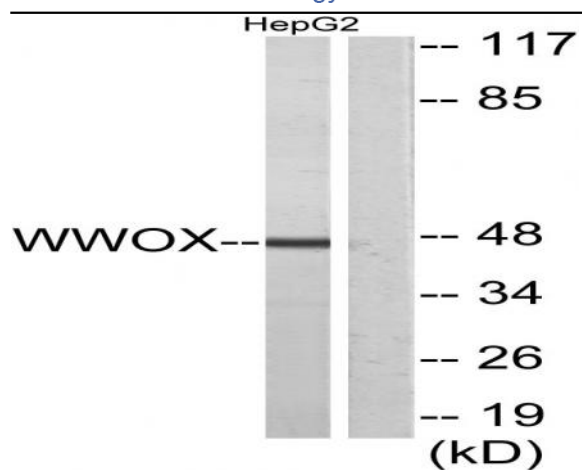
Sort : 1268

No4 : 1

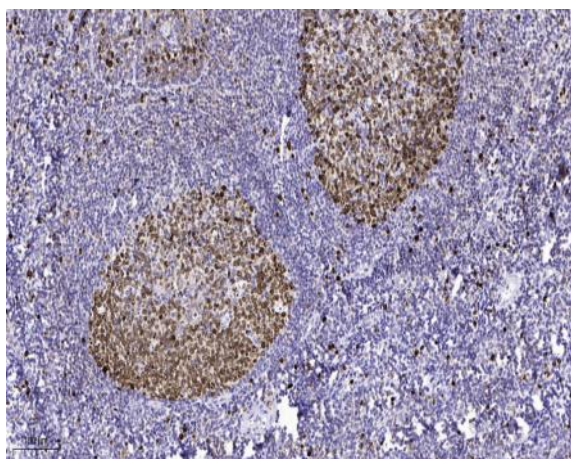
Host : Rabbit

Modifications : Unmodified

Products Images



Western blot analysis of lysates from HepG2 cells, using WWOX Antibody. The lane on the right is blocked with the synthesized peptide.



Immunohistochemical analysis of paraffin-embedded human tonsil. 1, Antibody was diluted at 1:200(4° overnight). 2, Tris-EDTA,pH9.0 was used for antigen retrieval. 3,Secondary antibody was diluted at 1:200(room temperature, 45min).