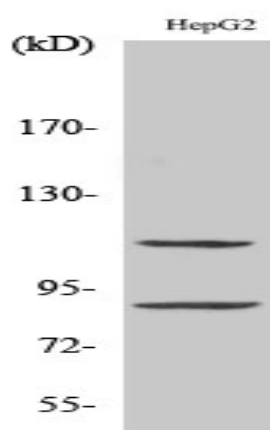


## ZBP-89 Polyclonal Antibody

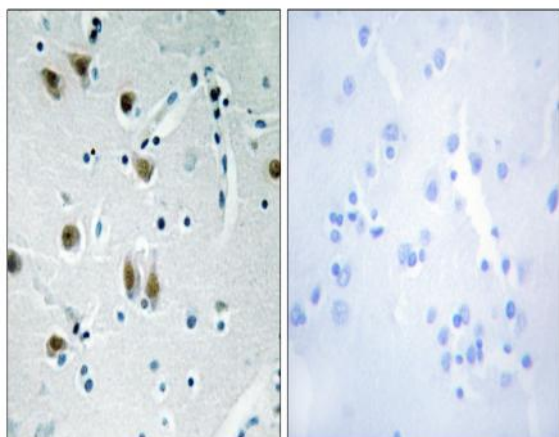
<b>Catalog No :</b>	YT4934
<b>Reactivity :</b>	Human;Mouse;Rat
<b>Applications :</b>	WB;IHC;IF;ELISA
<b>Target :</b>	ZBP-89
<b>Gene Name :</b>	ZNF148
<b>Protein Name :</b>	Zinc finger protein 148
<b>Human Gene Id :</b>	7707
<b>Human Swiss Prot No :</b>	Q9UQR1
<b>Mouse Gene Id :</b>	22661
<b>Mouse Swiss Prot No :</b>	Q61624
<b>Rat Gene Id :</b>	58820
<b>Rat Swiss Prot No :</b>	Q62806
<b>Immunogen :</b>	The antiserum was produced against synthesized peptide derived from human ZNF148. AA range:61-110
<b>Specificity :</b>	ZBP-89 Polyclonal Antibody detects endogenous levels of ZBP-89 protein.
<b>Formulation :</b>	Liquid in PBS containing 50% glycerol, 0.5% BSA and 0.02% sodium azide.
<b>Source :</b>	Polyclonal, Rabbit,IgG
<b>Dilution :</b>	WB 1:500 - 1:2000. IHC 1:100 - 1:300. IF 1:200 - 1:1000. ELISA: 1:5000. Not yet tested in other applications.
<b>Purification :</b>	The antibody was affinity-purified from rabbit antiserum by affinity-chromatography using epitope-specific immunogen.

<b>Concentration :</b>	1 mg/ml
<b>Storage Stability :</b>	-15°C to -25°C/1 year(Do not lower than -25°C)
<b>Observed Band :</b>	89kD
<b>Background :</b>	function:Involved in transcriptional regulation. Represses the transcription of a number of genes including gastrin, stromelysin and enolase. Binds to the G-rich box in the enhancer region of these genes.,similarity:Belongs to the krueppel C2H2-type zinc-finger protein family.,similarity:Contains 4 C2H2-type zinc fingers.,subunit:Interacts with HNRPDL.,
<b>Function :</b>	function:Involved in transcriptional regulation. Represses the transcription of a number of genes including gastrin, stromelysin and enolase. Binds to the G-rich box in the enhancer region of these genes.,similarity:Belongs to the krueppel C2H2-type zinc-finger protein family.,similarity:Contains 4 C2H2-type zinc fingers.,subunit:Interacts with HNRPDL.,
<b>Subcellular Location :</b>	Nucleus.
<b>Expression :</b>	Epithelium,Insulinoma,Kidney,Peripheral blood,Primary B-Cells,Testis,
<b>Sort :</b>	24462
<b>No4 :</b>	1

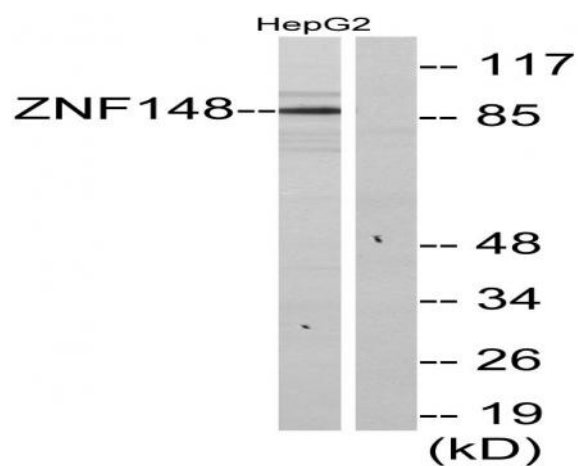
## Products Images



Western Blot analysis of various cells using ZBP-89 Polyclonal Antibody. Secondary antibody(catalog#:RS0002) was diluted at 1:20000



Immunohistochemistry analysis of paraffin-embedded human brain tissue, using ZNF148 Antibody. The picture on the right is blocked with the synthesized peptide.



Western blot analysis of lysates from HepG2 cells, using ZNF148 Antibody. The lane on the right is blocked with the synthesized peptide.