

ZNRF2 Polyclonal Antibody

Catalog No :	YT4986
Reactivity :	Human;Mouse
Applications :	IHC;IF;ELISA
Target :	ZNRF2
Gene Name :	ZNRF2
Protein Name :	E3 ubiquitin-protein ligase ZNRF2
Human Gene Id :	223082
Human Swiss Prot No :	Q8NHG8
Mouse Gene Id :	387524
Mouse Swiss Prot No :	Q71FD5
Immunogen :	The antiserum was produced against synthesized peptide derived from human ZNRF2. AA range:161-210
Specificity :	ZNRF2 Polyclonal Antibody detects endogenous levels of ZNRF2 protein.
Formulation :	Liquid in PBS containing 50% glycerol, 0.5% BSA and 0.02% sodium azide.
Source :	Polyclonal, Rabbit,IgG
Dilution :	IHC 1:100 - 1:300. IF 1:200 - 1:1000. ELISA: 1:20000. Not yet tested in other applications.
Purification :	The antibody was affinity-purified from rabbit antiserum by affinity-chromatography using epitope-specific immunogen.
Concentration :	1 mg/ml
Storage Stability :	-15°C to -25°C/1 year(Do not lower than -25°C)

Molecularweight : 24kD

Background : domain:The RING-type zinc finger domain is required for E3 ligase activity.,function:May play a role in the establishment and maintenance of neuronal transmission and plasticity via its ubiquitin ligase activity. E3 ubiquitin ligases accept ubiquitin from an E2 ubiquitin-conjugating enzyme in the form of a thioester and then directly transfer the ubiquitin to targeted substrates.,pathway:Protein modification; protein ubiquitination.,PTM:Phosphorylated upon DNA damage, probably by ATM or ATR.,similarity:Contains 1 RING-type zinc finger.,subcellular location:Present in presynaptic plasma membranes in neurons.,subunit:Interacts with UBE2N.,tissue specificity:Highly expressed in the brain, with higher expression during development than in adult. Expressed also in mammary glands, testis, colon and kidney.,

Function : domain:The RING-type zinc finger domain is required for E3 ligase activity.,function:May play a role in the establishment and maintenance of neuronal transmission and plasticity via its ubiquitin ligase activity. E3 ubiquitin ligases accept ubiquitin from an E2 ubiquitin-conjugating enzyme in the form of a thioester and then directly transfer the ubiquitin to targeted substrates.,pathway:Protein modification; protein ubiquitination.,PTM:Phosphorylated upon DNA damage, probably by ATM or ATR.,similarity:Contains 1 RING-type zinc finger.,subcellular location:Present in presynaptic plasma membranes in neurons.,subunit:Interacts with UBE2N.,tissue specificity:Highly expressed in the brain, with higher expression during development than in adult. Expressed also in mammary glands, testis, colon and kidney.,

Subcellular Location : Endosome membrane ; Peripheral membrane protein . Lysosome membrane ; Peripheral membrane protein . Cell junction, synapse, presynaptic cell membrane ; Peripheral membrane protein .

Expression : Highly expressed in the brain, with higher expression during development than in adult. Expressed also in mammary glands, testis, colon and kidney.

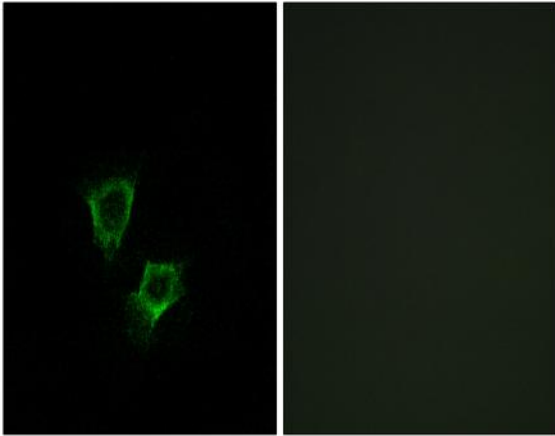
Sort : 24764

No4 : 1

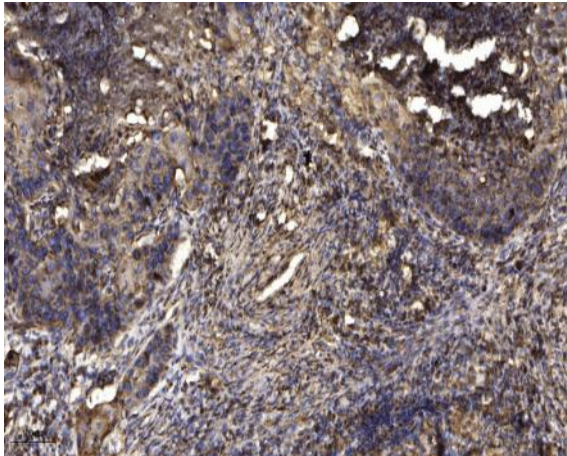
Host : Rabbit

Modifications : Unmodified

Products Images



Immunofluorescence analysis of A549 cells, using ZNRF2 Antibody. The picture on the right is blocked with the synthesized peptide.



Immunohistochemical analysis of paraffin-embedded human Squamous cell carcinoma of lung. 1, Antibody was diluted at 1:200(4° overnight). 2, Tris-EDTA,pH9.0 was used for antigen retrieval. 3,Secondary antibody was diluted at 1:200(room temperature, 45min).