

## NVL Polyclonal Antibody

<b>Catalog No :</b>	YT5047
<b>Reactivity :</b>	Human;Mouse;Rat
<b>Applications :</b>	WB;ELISA
<b>Target :</b>	NVL
<b>Fields :</b>	>>Ribosome biogenesis in eukaryotes
<b>Gene Name :</b>	NVL
<b>Protein Name :</b>	Nuclear valosin-containing protein-like
<b>Human Gene Id :</b>	4931
<b>Human Swiss Prot No :</b>	O15381
<b>Mouse Gene Id :</b>	67459
<b>Mouse Swiss Prot No :</b>	Q9DBY8
<b>Immunogen :</b>	Synthesized peptide derived from NVL . at AA range: 320-400
<b>Specificity :</b>	NVL Polyclonal Antibody detects endogenous levels of NVL protein.
<b>Formulation :</b>	Liquid in PBS containing 50% glycerol, 0.5% BSA and 0.02% sodium azide.
<b>Source :</b>	Polyclonal, Rabbit,IgG
<b>Dilution :</b>	WB 1:500 - 1:2000. ELISA: 1:20000. Not yet tested in other applications.
<b>Purification :</b>	The antibody was affinity-purified from rabbit antiserum by affinity-chromatography using epitope-specific immunogen.
<b>Concentration :</b>	1 mg/ml

---

**Storage Stability :** -15°C to -25°C/1 year(Do not lower than -25°C)

---

**Observed Band :** 95kD

---

**Background :** This gene encodes a member of the AAA (ATPases associated with diverse cellular activities) superfamily. Multiple transcript variants encoding different isoforms have been found for this gene. Two encoded proteins, described as major and minor isoforms, have been localized to distinct regions of the nucleus. The largest encoded protein (major isoform) has been localized to the nucleolus and shown to participate in ribosome biosynthesis (PMID: 15469983, 16782053), while the minor isoform has been localized to the nucleoplasm. [provided by RefSeq, Aug 2011],

---

**Function :** PTM:Phosphorylated.,similarity:Belongs to the AAA ATPase family.,tissue specificity:Widely expressed. Highest level of expression in heart, placenta, skeletal muscle, pancreas and retina.,

---

**Subcellular Location :** [Isoform 2]: Nucleus, nucleoplasm .; [Isoform 1]: Nucleus, nucleolus . Nucleus, nucleoplasm . Expressed predominantly in the nucleolus. Associates with pre-ribosomal particles in the nucleus. .

---

**Expression :** Widely expressed. Highest level of expression in heart, placenta, skeletal muscle, pancreas and retina.

---

**Sort :** 11013

---

**No4 :** 1

---

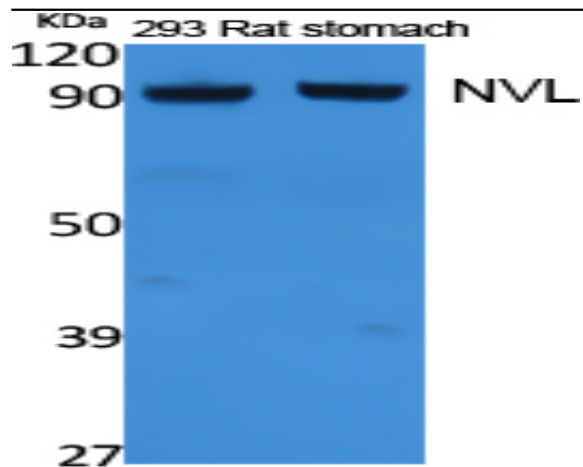
**Host :** Rabbit

---

**Modifications :** Unmodified

---

## Products Images



Western Blot analysis of extracts from rat stomach, 293 cells, using NVL Polyclonal Antibody. Secondary antibody(catalog#:RS0002) was diluted at 1:20000 cells nucleus extracted by Minute TM Cytoplasmic and Nuclear Fractionation kit (SC-003, Inventbiotech, MN, USA).