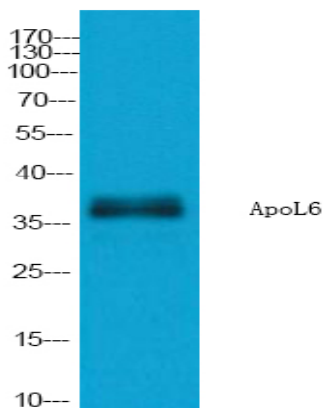


ApoL6 Polyclonal Antibody

Catalog No :	YT5059
Reactivity :	Human
Applications :	WB;ELISA
Target :	ApoL6
Gene Name :	APOL6
Protein Name :	Apolipoprotein L6
Human Gene Id :	80830
Human Swiss Prot No :	Q9BWW8
Immunogen :	Synthesized peptide derived from ApoL6 . at AA range: 240-320
Specificity :	ApoL6 Polyclonal Antibody detects endogenous levels of ApoL6 protein.
Formulation :	Liquid in PBS containing 50% glycerol, 0.5% BSA and 0.02% sodium azide.
Source :	Polyclonal, Rabbit,IgG
Dilution :	WB 1:500 - 1:2000. ELISA: 1:10000. Not yet tested in other applications.
Purification :	The antibody was affinity-purified from rabbit antiserum by affinity-chromatography using epitope-specific immunogen.
Concentration :	1 mg/ml
Storage Stability :	-15°C to -25°C/1 year(Do not lower than -25°C)
Observed Band :	38kD
Background :	This gene is a member of the apolipoprotein L gene family. The encoded protein is found in the cytoplasm, where it may affect the movement of lipids or allow the binding of lipids to organelles. [provided by RefSeq, Jul 2008],

Function :	function:May affect the movement of lipids in the cytoplasm or allow the binding of lipids to organelles.,similarity:Belongs to the apolipoprotein L family.,tissue specificity:Widely expressed; highly expressed in the uterus, fetal brain and spinal cord, also detected in heart, liver, lung, colon, spleen, thymus, prostate, placenta, adrenal gland, salivary and mammary gland.,
Subcellular Location :	Cytoplasm .
Expression :	Widely expressed; highly expressed in the uterus, fetal brain and spinal cord, also detected in heart, liver, lung, colon, spleen, thymus, prostate, placenta, adrenal gland, salivary and mammary gland.
Sort :	2166
No4 :	1
Host :	Rabbit
Modifications :	Unmodified

Products Images



Western Blot analysis of extracts from K562 cells, using ApoL6 Polyclonal Antibody. Secondary antibody(catalog#:RS0002) was diluted at 1:20000