

ABCG1 Polyclonal Antibody

Catalog No :	YT5060
Reactivity :	Human;Mouse;Rat
Applications :	WB;IHC;IF;ELISA
Target :	ABCG1
Fields :	>>ABC transporters;>>Lipid and atherosclerosis
Gene Name :	ABCG1
Protein Name :	ATP-binding cassette sub-family G member 1
Human Gene Id :	9619
Human Swiss Prot No :	P45844
Mouse Gene Id :	11307
Mouse Swiss Prot No :	Q64343
Immunogen :	Synthesized peptide derived from ABCG1 . at AA range: 560-640
Specificity :	ABCG1 Polyclonal Antibody detects endogenous levels of ABCG1 protein.
Formulation :	Liquid in PBS containing 50% glycerol, 0.5% BSA and 0.02% sodium azide.
Source :	Polyclonal, Rabbit,IgG
Dilution :	WB 1:500 - 1:2000. IHC: 1:100-300 ELISA: 1:10000.. IF 1:50-200
Purification :	The antibody was affinity-purified from rabbit antiserum by affinity-chromatography using epitope-specific immunogen.
Concentration :	1 mg/ml

Storage Stability : -15°C to -25°C/1 year(Do not lower than -25°C)

Observed Band : 75kD

Cell Pathway : ABC transporters;

Background : The protein encoded by this gene is a member of the superfamily of ATP-binding cassette (ABC) transporters. ABC proteins transport various molecules across extra- and intra-cellular membranes. ABC genes are divided into seven distinct subfamilies (ABC1, MDR/TAP, MRP, ALD, OABP, GCN20, White). This protein is a member of the White subfamily. It is involved in macrophage cholesterol and phospholipids transport, and may regulate cellular lipid homeostasis in other cell types. Six alternative splice variants have been identified. [provided by RefSeq, Jul 2008],

Function : alternative products:Additional isoforms seem to exist,disease:Overexpressed in macrophages from patients with Tangier disease compared to control macrophages. Expressed in foamy macrophages within the atherosclerotic plaque. May play a role in the cholesterol metabolism of macrophages in vitro and in the atherosclerotic plaque.,function:Transporter involved in macrophage lipid homeostasis. Is an active component of the macrophage lipid export complex. Could also be involved in intracellular lipid transport processes. The role in cellular lipid homeostasis may not be limited to macrophages.,induction:Strongly induced in monocyte-derived macrophages during cholesterol influx. Conversely, mRNA and protein expression are suppressed by lipid efflux. Induction is mediated by the liver X receptor/retinoid X receptor (LXR/RXR) pathway. Not induced by bacterial lipopolysaccharides (LPS). Repress

Subcellular Location : Endoplasmic reticulum membrane ; Multi-pass membrane protein . Golgi apparatus membrane ; Multi-pass membrane protein . Cell membrane . Predominantly localized in the intracellular compartments mainly associated with the endoplasmic reticulum (ER) and Golgi membranes.

Expression : Expressed in several tissues. Expressed in macrophages; expression is increased in macrophages from patients with Tangier disease.

Tag : orthogonal

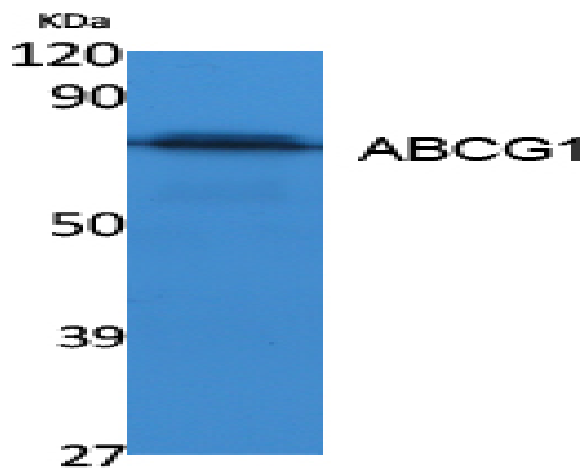
Sort : 1

No4 : 1

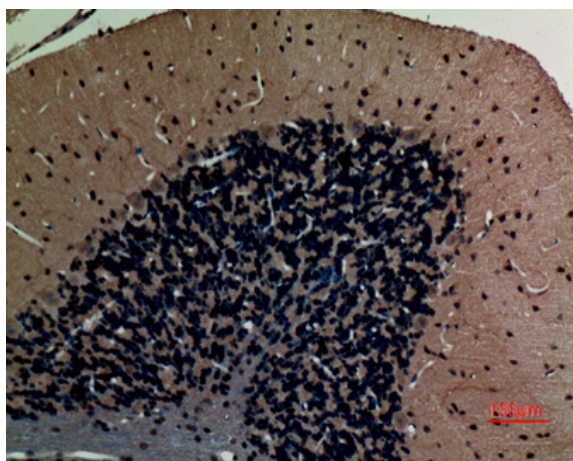
Host : Rabbit

Modifications : Unmodified

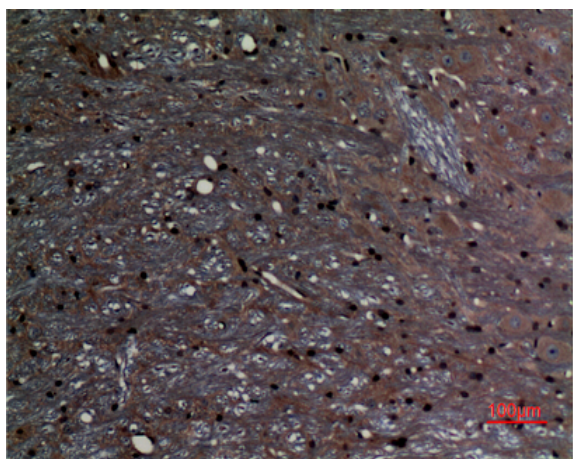
Products Images



Western Blot analysis of extracts from K562 cells, using ABCG1 Polyclonal Antibody. Secondary antibody(catalog#:RS0002) was diluted at 1:20000



Immunohistochemical analysis of paraffin-embedded rat-brain, antibody was diluted at 1:100



Immunohistochemical analysis of paraffin-embedded rat-brain, antibody was diluted at 1:100