

Nup88 Polyclonal Antibody

Catalog No :	YT5073
Reactivity :	Human;Mouse
Applications :	WB;ELISA
Target :	Nup88
Fields :	>>Nucleocytoplasmic transport;>>Amyotrophic lateral sclerosis
Gene Name :	NUP88
Protein Name :	Nuclear pore complex protein Nup88
Human Gene Id :	4927
Human Swiss Prot No :	Q99567
Mouse Gene Id :	19069
Mouse Swiss Prot No :	Q8CEC0
Immunogen :	Synthesized peptide derived from Nup88 . at AA range: 330-410
Specificity :	Nup88 Polyclonal Antibody detects endogenous levels of Nup88 protein.
Formulation :	Liquid in PBS containing 50% glycerol, 0.5% BSA and 0.02% sodium azide.
Source :	Polyclonal, Rabbit,IgG
Dilution :	WB 1:500 - 1:2000. ELISA: 1:20000. Not yet tested in other applications.
Purification :	The antibody was affinity-purified from rabbit antiserum by affinity-chromatography using epitope-specific immunogen.
Concentration :	1 mg/ml

Storage Stability : -15°C to -25°C/1 year(Do not lower than -25°C)

Observed Band : 83kD

Background : The nuclear pore complex is a massive structure that extends across the nuclear envelope, forming a gateway that regulates the flow of macromolecules between the nucleus and the cytoplasm. Nucleoporins, a family of 50 to 100 proteins, are the main components of the nuclear pore complex in eukaryotic cells. The protein encoded by this gene belongs to the nucleoporin family and is associated with the oncogenic nucleoporin CAN/Nup214 in a dynamic subcomplex. This protein is also overexpressed in a large number of malignant neoplasms and precancerous dysplasias. Alternative splicing results in multiple transcript variants encoding different isoforms. [provided by RefSeq, Mar 2016],

Function : function:Essential component of nuclear pore complex.,PTM:Phosphorylated upon DNA damage, probably by ATM or ATR.,subunit:Interacts with NUP214/CAN.,tissue specificity:Ubiquitous.,

Subcellular Location : Nucleus, nuclear pore complex .

Expression : Ubiquitous.

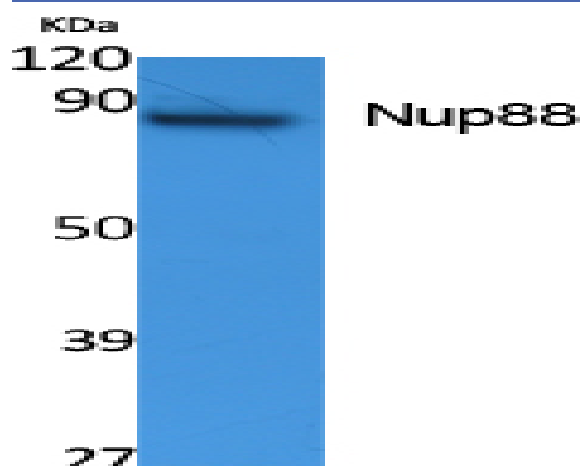
Sort : 11006

No4 : 1

Host : Rabbit

Modifications : Unmodified

Products Images



Western Blot analysis of extracts from K562 cells, using Nup88 Polyclonal Antibody. Secondary antibody(catalog#:RS0002) was diluted at 1:20000