

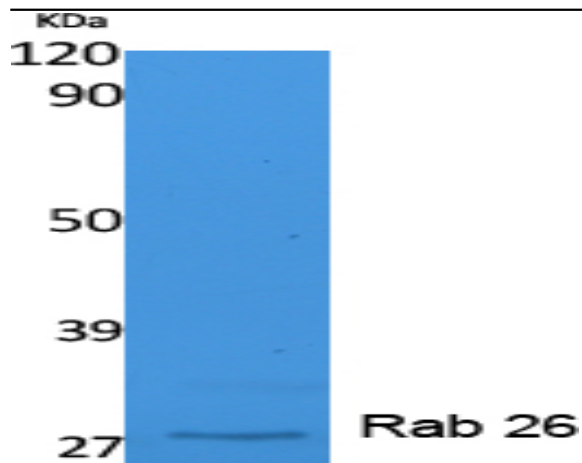
## Rab 26 Polyclonal Antibody

<b>Catalog No :</b>	YT5075
<b>Reactivity :</b>	Human;Mouse;Rat
<b>Applications :</b>	WB;IHC;IF;ELISA
<b>Target :</b>	Rab 26
<b>Gene Name :</b>	RAB26
<b>Protein Name :</b>	Ras-related protein Rab-26
<b>Human Gene Id :</b>	25837
<b>Human Swiss Prot No :</b>	Q9ULW5
<b>Mouse Gene Id :</b>	328778
<b>Mouse Swiss Prot No :</b>	Q504M8
<b>Rat Gene Id :</b>	171111
<b>Rat Swiss Prot No :</b>	P51156
<b>Immunogen :</b>	Synthesized peptide derived from Rab 26 . at AA range: 180-256
<b>Specificity :</b>	Rab 26 Polyclonal Antibody detects endogenous levels of Rab 26 protein.
<b>Formulation :</b>	Liquid in PBS containing 50% glycerol, 0.5% BSA and 0.02% sodium azide.
<b>Source :</b>	Polyclonal, Rabbit,IgG
<b>Dilution :</b>	WB 1:500 - 1:2000. IHC: 1:100-300 ELISA: 1:40000.. IF 1:50-200
<b>Purification :</b>	The antibody was affinity-purified from rabbit antiserum by affinity-chromatography using epitope-specific immunogen.

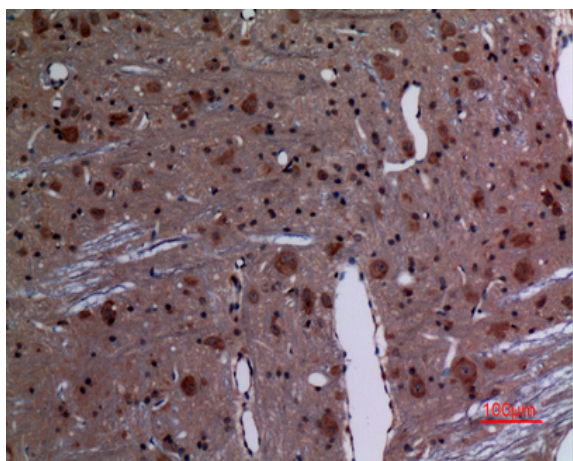
<b>Concentration :</b>	1 mg/ml
<b>Storage Stability :</b>	-15°C to -25°C/1 year(Do not lower than -25°C)
<b>Observed Band :</b>	27kD
<b>Background :</b>	Members of the RAB protein family, including RAB26, are important regulators of vesicular fusion and trafficking. The RAB family of small G proteins regulates intercellular vesicle trafficking, including exocytosis, endocytosis, and recycling (summary by Seki et al., 2000 [PubMed 11043516]).[supplied by OMIM, Nov 2010],
<b>Function :</b>	function:Participates in exocrine secretion: regulates the secretion of acinar granules in the parotid gland.,similarity:Belongs to the small GTPase superfamily. Rab family.,tissue specificity:Predominantly expressed in brain.,
<b>Subcellular Location :</b>	Golgi apparatus membrane ; Lipid-anchor ; Cytoplasmic side . Cytoplasmic vesicle, secretory vesicle membrane ; Lipid-anchor ; Cytoplasmic side . Not localized at the plasma membrane (By similarity). Inhibition of S-geranylgeranyl cysteine formation abolishes membrane location. .
<b>Expression :</b>	Predominantly expressed in brain.
<b>Sort :</b>	13217
<b>No4 :</b>	1
<b>Host :</b>	Rabbit
<b>Modifications :</b>	Unmodified

---

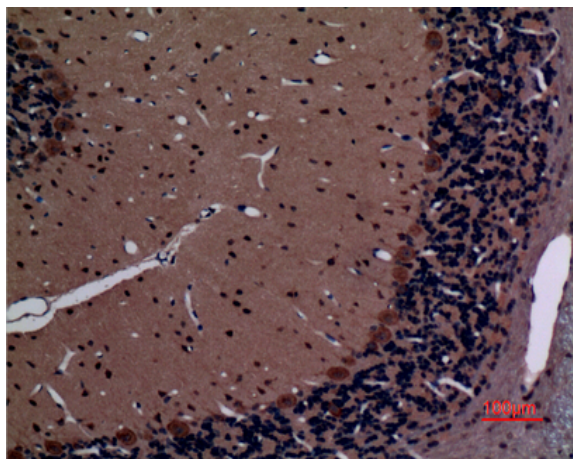
## Products Images



Western Blot analysis of extracts from K562 cells, using Rab 26 Polyclonal Antibody. Secondary antibody(catalog#:RS0002) was diluted at 1:20000



Immunohistochemical analysis of paraffin-embedded rat-brain, antibody was diluted at 1:100



Immunohistochemical analysis of paraffin-embedded rat-brain, antibody was diluted at 1:100