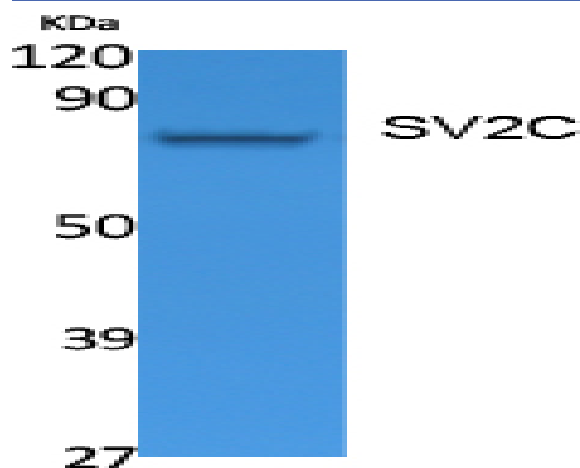


SV2C Polyclonal Antibody

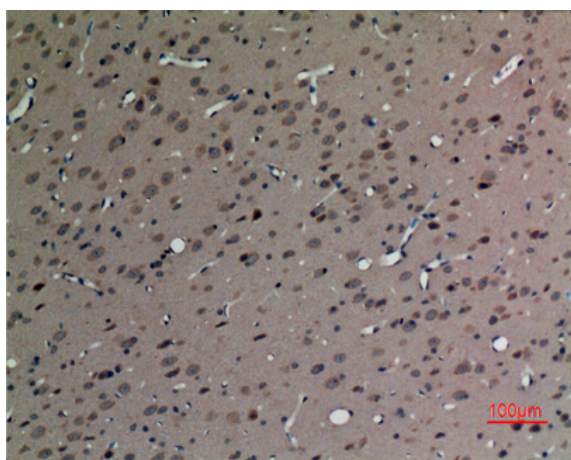
Catalog No :	YT5077
Reactivity :	Human;Mouse;Rat
Applications :	WB;IHC;IF;ELISA
Target :	SV2C
Fields :	>>ECM-receptor interaction
Gene Name :	SV2C
Protein Name :	Synaptic vesicle glycoprotein 2C
Human Gene Id :	22987
Human Swiss Prot No :	Q496J9
Mouse Gene Id :	75209
Mouse Swiss Prot No :	Q69ZS6
Rat Gene Id :	29643
Rat Swiss Prot No :	Q9Z2I6
Immunogen :	Synthesized peptide derived from the Internal region of human SV2C. AA range 330-390
Specificity :	SV2C Polyclonal Antibody detects endogenous levels of SV2C protein.
Formulation :	Liquid in PBS containing 50% glycerol, 0.5% BSA and 0.02% sodium azide.
Source :	Polyclonal, Rabbit,IgG
Dilution :	WB 1:500 - 1:2000. IHC: 1:100-300 ELISA: 1:20000.. IF 1:50-200

Purification :	The antibody was affinity-purified from rabbit antiserum by affinity-chromatography using epitope-specific immunogen.
Concentration :	1 mg/ml
Storage Stability :	-15°C to -25°C/1 year(Do not lower than -25°C)
Observed Band :	82kD
Cell Pathway :	ECM-receptor interaction;
Background :	function:Plays a role in the control of regulated secretion in neural and endocrine cells, enhancing selectively low-frequency neurotransmission. Positively regulates vesicle fusion by maintaining the readily releasable pool of secretory vesicles.,PTM:N-glycosylated.,similarity:Belongs to the major facilitator superfamily.,subcellular location:Enriched in small synaptic vesicles and adrenal microsomes, not present in chromaffin granules. Associated with both insulin granules and synaptic-like microvesicles in insulin-secreting cells of the pancreas.,subunit:Interacts with SYT1 in a calcium-dependent manner.,
Function :	function:Plays a role in the control of regulated secretion in neural and endocrine cells, enhancing selectively low-frequency neurotransmission. Positively regulates vesicle fusion by maintaining the readily releasable pool of secretory vesicles.,PTM:N-glycosylated.,similarity:Belongs to the major facilitator superfamily.,subcellular location:Enriched in small synaptic vesicles and adrenal microsomes, not present in chromaffin granules. Associated with both insulin granules and synaptic-like microvesicles in insulin-secreting cells of the pancreas.,subunit:Interacts with SYT1 in a calcium-dependent manner.,
Subcellular Location :	Cytoplasmic vesicle, secretory vesicle, synaptic vesicle membrane ; Multi-pass membrane protein . Enriched in small synaptic vesicles and adrenal microsomes, not present in chromaffin granules. Associated with both insulin granules and synaptic-like microvesicles in insulin-secreting cells of the pancreas. .
Expression :	Brain,
Sort :	16779
No4 :	1
Host :	Rabbit
Modifications :	Unmodified

Products Images



Western Blot analysis of extracts from Jurkat cells, using SV2C Polyclonal Antibody. Secondary antibody(catalog#:RS0002) was diluted at 1:20000



Immunohistochemical analysis of paraffin-embedded rat-brain, antibody was diluted at 1:100