

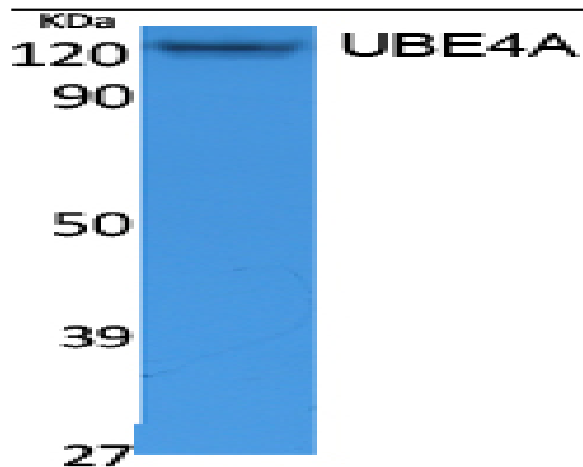
## UBE4A Polyclonal Antibody

<b>Catalog No :</b>	YT5080
<b>Reactivity :</b>	Human;Mouse;Rat
<b>Applications :</b>	WB;IHC;IF;ELISA
<b>Target :</b>	UBE4A
<b>Fields :</b>	>>Ubiquitin mediated proteolysis
<b>Gene Name :</b>	UBE4A
<b>Protein Name :</b>	Ubiquitin conjugation factor E4 A
<b>Human Gene Id :</b>	9354
<b>Human Swiss Prot No :</b>	Q14139
<b>Rat Gene Id :</b>	315608
<b>Rat Swiss Prot No :</b>	Q6P7A2
<b>Immunogen :</b>	Synthesized peptide derived from the N-terminal region of human UBE4A.
<b>Specificity :</b>	UBE4A Polyclonal Antibody detects endogenous levels of UBE4A protein.
<b>Formulation :</b>	Liquid in PBS containing 50% glycerol, 0.5% BSA and 0.02% sodium azide.
<b>Source :</b>	Polyclonal, Rabbit,IgG
<b>Dilution :</b>	WB 1:500 - 1:2000. IHC: 1:100-300 ELISA: 1:10000.. IF 1:50-200
<b>Purification :</b>	The antibody was affinity-purified from rabbit antiserum by affinity-chromatography using epitope-specific immunogen.
<b>Concentration :</b>	1 mg/ml

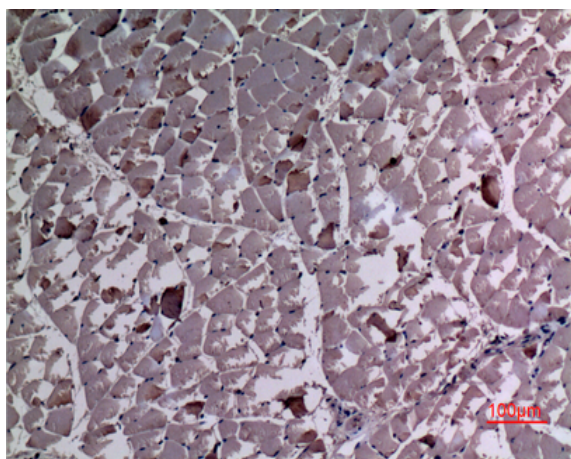
---

<b>Storage Stability :</b>	<u>-15°C to -25°C/1 year(Do not lower than -25°C)</u>
<b>Observed Band :</b>	<u>122kD</u>
<b>Cell Pathway :</b>	<u>Ubiquitin mediated proteolysis;</u>
<b>Background :</b>	<u>This gene encodes a member of the U-box ubiquitin ligase family. The encoded protein is involved in multiubiquitin chain assembly and plays a critical role in chromosome condensation and separation through the polyubiquitination of securin. Autoantibodies against the encoded protein may be markers for scleroderma and Crohn's disease. A pseudogene of this gene is located on the long arm of chromosome 3. Alternatively spliced transcript variants encoding multiple isoforms have been observed for this gene. [provided by RefSeq, Feb 2011],</u>
<b>Function :</b>	<u>function:Binds to the ubiquitin moieties of preformed conjugates and catalyzes ubiquitin chain assembly in conjunction with E1, E2, and E3.,sequence caution:Contaminating sequence. Potential poly-A sequence.,similarity:Belongs to the ubiquitin conjugation factor E4 family.,similarity:Contains 1 U-box domain.,</u>
<b>Subcellular Location :</b>	<u>Cytoplasm .</u>
<b>Expression :</b>	<u>Bone marrow,Platelet,Skeletal muscle,</u>
<b>Sort :</b>	<u>23871</u>
<b>No4 :</b>	<u>1</u>
<b>Host :</b>	<u>Rabbit</u>
<b>Modifications :</b>	<u>Unmodified</u>

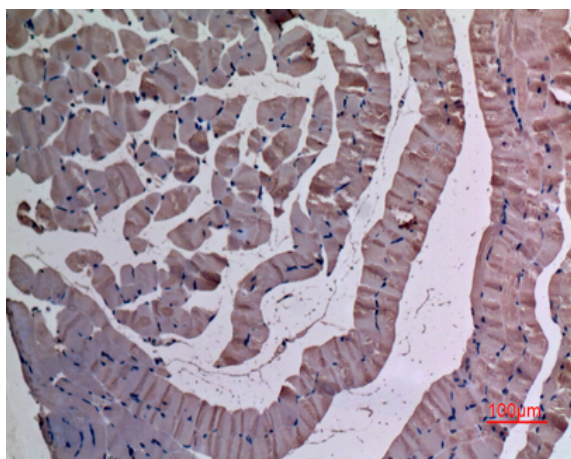
## Products Images



Western Blot analysis of extracts from Jurkat cells, using UBE4A Polyclonal Antibody. Secondary antibody(catalog#:RS0002) was diluted at 1:20000



Immunohistochemical analysis of paraffin-embedded rat-muscle, antibody was diluted at 1:100



Immunohistochemical analysis of paraffin-embedded mouse-muscle, antibody was diluted at 1:100