

RhCG Polyclonal Antibody

| | |
|------------------------------|---|
| Catalog No : | YT5088 |
| Reactivity : | Human;Rat;Mouse; |
| Applications : | WB;IHC;IF;ELISA |
| Target : | RhCG |
| Gene Name : | RHCG |
| Protein Name : | Ammonium transporter Rh type C |
| Human Gene Id : | 51458 |
| Human Swiss Prot No : | Q9UBD6 |
| Mouse Swiss Prot No : | Q9QXP0 |
| Immunogen : | Synthesized peptide derived from the Internal region of human RhCG. |
| Specificity : | RhCG Polyclonal Antibody detects endogenous levels of RhCG protein. |
| Formulation : | Liquid in PBS containing 50% glycerol, 0.5% BSA and 0.02% sodium azide. |
| Source : | Polyclonal, Rabbit,IgG |
| Dilution : | WB 1:500 - 1:2000. IHC: 1:100-300 ELISA: 1:40000.. IF 1:50-200 |
| Purification : | The antibody was affinity-purified from rabbit antiserum by affinity-chromatography using epitope-specific immunogen. |
| Concentration : | 1 mg/ml |
| Storage Stability : | -15°C to -25°C/1 year(Do not lower than -25°C) |
| Observed Band : | 53kD |

Background : developmental stage:Specifically expressed in fetal kidney.,function:Functions as an electroneutral and bidirectional ammonium transporter. May regulate transepithelial ammonia secretion.,PTM:N-glycosylated.,similarity:Belongs to the ammonium transporter (TC 2.A.49) family. Rh subfamily.,subcellular location:Also detected at the basolateral membrane and in subapical vesicles.,tissue specificity:Expressed in brain, testis, placenta, pancreas, esophagus and prostate. Expressed in squamous epithelial tissues (at protein level). Specifically expressed in kidney according to PubMed:11062476.,

Function : developmental stage:Specifically expressed in fetal kidney.,function:Functions as an electroneutral and bidirectional ammonium transporter. May regulate transepithelial ammonia secretion.,PTM:N-glycosylated.,similarity:Belongs to the ammonium transporter (TC 2.A.49) family. Rh subfamily.,subcellular location:Also detected at the basolateral membrane and in subapical vesicles.,tissue specificity:Expressed in brain, testis, placenta, pancreas, esophagus and prostate. Expressed in squamous epithelial tissues (at protein level). Specifically expressed in kidney according to PubMed:11062476.,

Subcellular Location : Apical cell membrane ; Multi-pass membrane protein . Also detected at the basolateral membrane and in subapical vesicles. .

Expression : Expressed in brain, testis, placenta, pancreas, esophagus and prostate. Expressed in squamous epithelial tissues (at protein level). According to PubMed:11062476, specifically expressed in kidney.

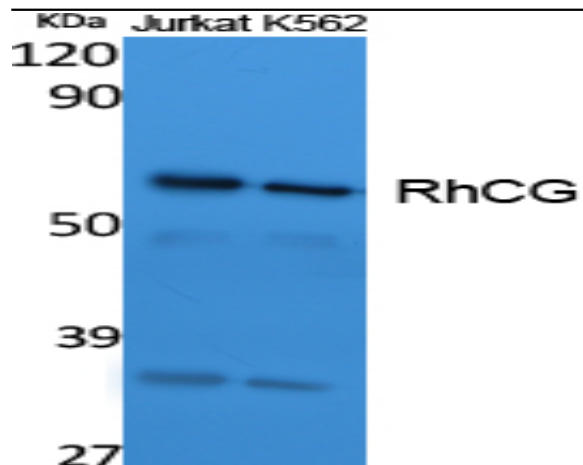
Sort : 14438

No4 : 1

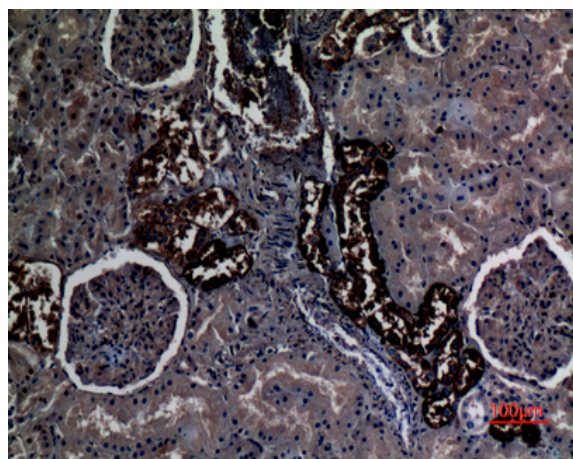
Host : Rabbit

Modifications : Unmodified

Products Images



Western Blot analysis of extracts from Jurkat, K562 cells, using RhCG Polyclonal Antibody. Secondary antibody(catalog#:RS0002) was diluted at 1:20000



Immunohistochemical analysis of paraffin-embedded human-kidney, antibody was diluted at 1:100