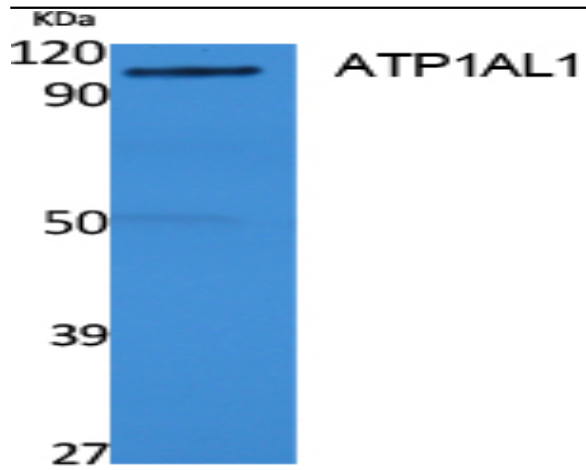


ATP1AL1 Polyclonal Antibody

Catalog No :	YT5099
Reactivity :	Human;Rat
Applications :	WB;ELISA
Target :	ATP1AL1
Fields :	>>Oxidative phosphorylation;>>Metabolic pathways
Gene Name :	ATP12A
Protein Name :	Potassium-transporting ATPase alpha chain 2
Human Gene Id :	479
Human Swiss Prot No :	P54707
Mouse Swiss Prot No :	Q9Z1W8
Rat Swiss Prot No :	P54708
Immunogen :	Synthesized peptide derived from ATP1AL1 . at AA range: 380-460
Specificity :	ATP1AL1 Polyclonal Antibody detects endogenous levels of ATP1AL1 protein.
Formulation :	Liquid in PBS containing 50% glycerol, 0.5% BSA and 0.02% sodium azide.
Source :	Polyclonal, Rabbit,IgG
Dilution :	WB 1:500 - 1:2000. ELISA: 1:20000. Not yet tested in other applications.
Purification :	The antibody was affinity-purified from rabbit antiserum by affinity-chromatography using epitope-specific immunogen.
Concentration :	1 mg/ml

Storage Stability :	-15°C to -25°C/1 year(Do not lower than -25°C)
Observed Band :	115kD
Cell Pathway :	Oxidative phosphorylation;
Background :	The protein encoded by this gene belongs to the family of P-type cation transport ATPases. This gene encodes a catalytic subunit of the ouabain-sensitive H ⁺ /K ⁺ -ATPase that catalyzes the hydrolysis of ATP coupled with the exchange of H ⁽⁺⁾ and K ⁽⁺⁾ ions across the plasma membrane. It is also responsible for potassium absorption in various tissues. Two transcript variants encoding different isoforms have been found for this gene. [provided by RefSeq, Jun 2010],
Function :	catalytic activity:ATP + H ₂ O + H ⁽⁺⁾ (In) + K ⁽⁺⁾ (Out) = ADP + phosphate + H ⁽⁺⁾ (Out) + K ⁽⁺⁾ (In).,function:Catalyzes the hydrolysis of ATP coupled with the exchange of H ⁽⁺⁾ and K ⁽⁺⁾ ions across the plasma membrane. Responsible for potassium absorption in various tissues.,similarity:Belongs to the cation transport ATPase (P-type) family. Type IIC subfamily.,subunit:Composed of two subunits: alpha (catalytic) and beta.,tissue specificity:Found in skin and kidney.,
Subcellular Location :	Apical cell membrane ; Multi-pass membrane protein .
Expression :	Expressed in airway epithelial cells (at protein level) (PubMed:29391451). Found in skin and kidney. Detected in prostate basal cells (at protein level). Expression is increased in benign prostate hyperplasia and tumor tissues (at protein level).
Sort :	2423
No4 :	1
Host :	Rabbit
Modifications :	Unmodified

Products Images



Western Blot analysis of extracts from rat stomach, using ATP1AL1 Polyclonal Antibody. Secondary antibody(catalog#:RS0002) was diluted at 1:20000