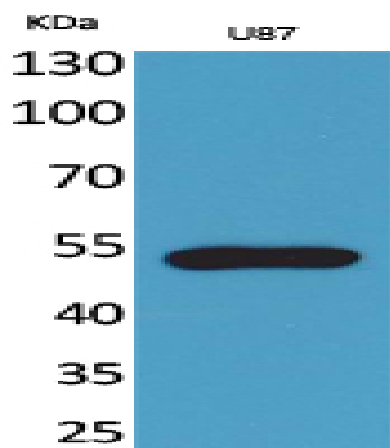


Fractalkine Receptor Polyclonal Antibody

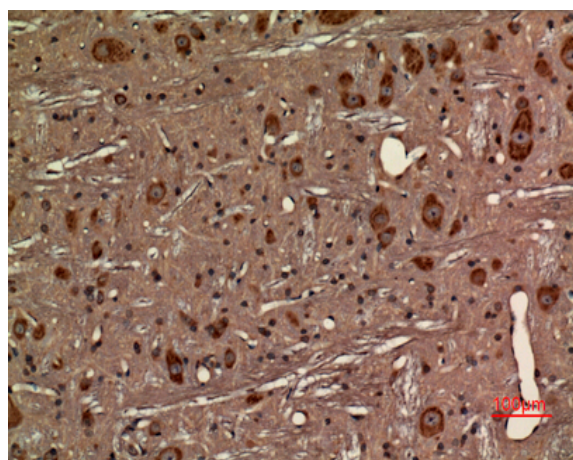
Catalog No :	YT5112
Reactivity :	Human;Mouse;Rat
Applications :	WB;IHC;IF;ELISA
Target :	Fractalkine Receptor
Fields :	>>Cytokine-cytokine receptor interaction;>>Viral protein interaction with cytokine and cytokine receptor;>>Chemokine signaling pathway
Gene Name :	CX3CR1
Protein Name :	CX3C chemokine receptor 1
Human Gene Id :	1524
Human Swiss Prot No :	P49238
Mouse Gene Id :	13051
Mouse Swiss Prot No :	Q9Z0D9
Rat Gene Id :	171056
Rat Swiss Prot No :	P35411
Immunogen :	Synthesized peptide derived from Fractalkine Receptor . at AA range: 120-200
Specificity :	Fractalkine Receptor Polyclonal Antibody detects endogenous levels of Fractalkine Receptor protein.
Formulation :	Liquid in PBS containing 50% glycerol, 0.5% BSA and 0.02% sodium azide.
Source :	Polyclonal, Rabbit,IgG
Dilution :	WB 1:500 - 1:2000. IHC: 1:100-300 ELISA: 1:20000.. IF 1:50-200

Purification :	The antibody was affinity-purified from rabbit antiserum by affinity-chromatography using epitope-specific immunogen.
Concentration :	1 mg/ml
Storage Stability :	-15°C to -25°C/1 year(Do not lower than -25°C)
Observed Band :	40kD
Cell Pathway :	Cytokine-cytokine receptor interaction;Chemokine;
Background :	Fractalkine is a transmembrane protein and chemokine involved in the adhesion and migration of leukocytes. The protein encoded by this gene is a receptor for fractalkine. The encoded protein also is a coreceptor for HIV-1, and some variations in this gene lead to increased susceptibility to HIV-1 infection and rapid progression to AIDS. Four transcript variants encoding two different isoforms have been found for this gene. [provided by RefSeq, Jan 2010],
Function :	function:Receptor for the CX3C chemokine fractalkine and mediates both its adhesive and migratory functions. Acts as coreceptor with CD4 for HIV-1 virus envelope protein (in vitro). Isoform 2 and isoform 3 seem to be more potent HIV-1 coreceptors than isoform 1.,polymorphism:Variations in CX3CR1 are associated with rapid progression to AIDS [MIM:609423]. Increased susceptibility to HIV infection and rapid progression to AIDS are associated with the Ile-249/Met-280 haplotype.,similarity:Belongs to the G-protein coupled receptor 1 family.,subunit:Interacts with human respiratory syncytial virus (HRSV) protein G; this interaction modulates host immune response. Interacts with HIV-1 envelope polyprotein gp160.,tissue specificity:Expressed in lymphoid and neural tissues.,
Subcellular Location :	Cell membrane ; Multi-pass membrane protein .
Expression :	Expressed in lymphoid and neural tissues (PubMed:7590284). Expressed in lymphocyte subsets, such as natural killer (NK) cells, gamma-delta T-cells and terminally differentiated CD8(+) T-cells (PubMed:12055230). Expressed in smooth muscle cells in atherosclerotic plaques (PubMed:14581400).
Sort :	1
No4 :	1
Host :	Rabbit
Modifications :	Unmodified

Products Images



Western Blot analysis of U87 cells using Fractalkine Receptor Polyclonal Antibody. Secondary antibody(catalog#:RS0002) was diluted at 1:20000



Immunohistochemical analysis of paraffin-embedded rat-brain, antibody was diluted at 1:100