

## Hepassocin Polyclonal Antibody

<b>Catalog No :</b>	YT5127
<b>Reactivity :</b>	Human;Mouse;Rat
<b>Applications :</b>	WB;IHC;IF;ELISA
<b>Target :</b>	Hepassocin
<b>Gene Name :</b>	FGL1
<b>Protein Name :</b>	Fibrinogen-like protein 1
<b>Human Gene Id :</b>	2267
<b>Human Swiss Prot No :</b>	Q08830
<b>Mouse Gene Id :</b>	234199
<b>Mouse Swiss Prot No :</b>	Q71KU9
<b>Rat Swiss Prot No :</b>	Q5M8C6
<b>Immunogen :</b>	Synthesized peptide derived from the Internal region of human Hepassocin.
<b>Specificity :</b>	Hepassocin Polyclonal Antibody detects endogenous levels of Hepassocin protein.
<b>Formulation :</b>	Liquid in PBS containing 50% glycerol, 0.5% BSA and 0.02% sodium azide.
<b>Source :</b>	Polyclonal, Rabbit,IgG
<b>Dilution :</b>	WB 1:500 - 1:2000. IHC: 1:100-300 ELISA: 1:20000.. IF 1:50-200
<b>Purification :</b>	The antibody was affinity-purified from rabbit antiserum by affinity-chromatography using epitope-specific immunogen.
<b>Concentration :</b>	1 mg/ml

**Storage Stability :** -15°C to -25°C/1 year(Do not lower than -25°C)

**Observed Band :** 36kD

**Background :** fibrinogen like 1(FGL1) Homo sapiens Fibrinogen-like 1 is a member of the fibrinogen family. This protein is homologous to the carboxy terminus of the fibrinogen beta- and gamma- subunits which contains the four conserved cysteines of fibrinogens and fibrinogen related proteins. However, this protein lacks the platelet-binding site, cross-linking region and a thrombin-sensitive site which are necessary for fibrin clot formation. This protein may play a role in the development of hepatocellular carcinomas. Four alternatively spliced transcript variants encoding the same protein exist for this gene. [provided by RefSeq, Jul 2008],

**Function :** function:Has hepatocyte mitogenic activity.,similarity:Contains 1 fibrinogen C-terminal domain.,subunit:Homodimer.,tissue specificity:Liver specific.,

**Subcellular Location :** Secreted . Secreted in the blood plasma. .

**Expression :** Under normal conditions, liver-specific.

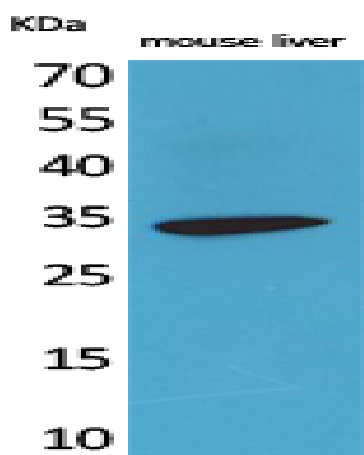
**Sort :** 7315

**No4 :** 1

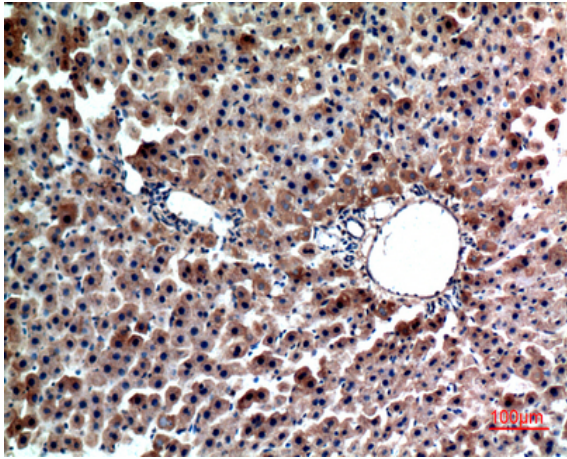
**Host :** Rabbit

**Modifications :** Unmodified

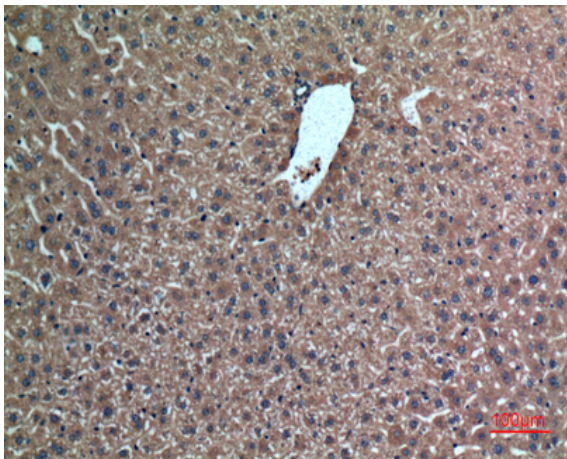
## Products Images



Western Blot analysis of mouse liver cells using Hepassocin Polyclonal Antibody. Secondary antibody(catalog#:RS0002) was diluted at 1:20000



Immunohistochemical analysis of paraffin-embedded rat-liver, antibody was diluted at 1:100



Immunohistochemical analysis of paraffin-embedded mouse-liver, antibody was diluted at 1:100