

## P2X3 Polyclonal Antibody

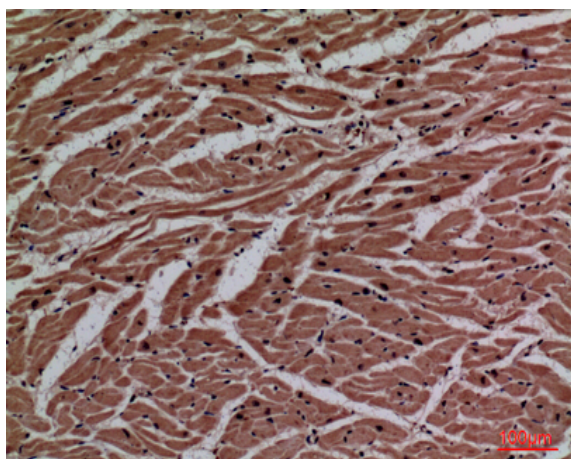
<b>Catalog No :</b>	YT5211
<b>Reactivity :</b>	Human;Mouse;Rat
<b>Applications :</b>	WB;IHC;IF;ELISA
<b>Target :</b>	P2X3
<b>Fields :</b>	>>Calcium signaling pathway;>>Neuroactive ligand-receptor interaction;>>Taste transduction
<b>Gene Name :</b>	P2RX3
<b>Protein Name :</b>	P2X purinoceptor 3
<b>Human Gene Id :</b>	5024
<b>Human Swiss Prot No :</b>	P56373
<b>Mouse Gene Id :</b>	228139
<b>Mouse Swiss Prot No :</b>	Q3UR32
<b>Rat Gene Id :</b>	81739
<b>Rat Swiss Prot No :</b>	P49654
<b>Immunogen :</b>	The antiserum was produced against synthesized peptide derived from the Internal region of human P2RX3. AA range:81-130
<b>Specificity :</b>	P2X3 Polyclonal Antibody detects endogenous levels of P2X3 protein.
<b>Formulation :</b>	Liquid in PBS containing 50% glycerol, 0.5% BSA and 0.02% sodium azide.
<b>Source :</b>	Polyclonal, Rabbit,IgG
<b>Dilution :</b>	WB 1:500 - 1:2000. IHC: 1:100-300 ELISA: 1:20000.. IF 1:50-200

<b>Purification :</b>	The antibody was affinity-purified from rabbit antiserum by affinity-chromatography using epitope-specific immunogen.
<b>Concentration :</b>	1 mg/ml
<b>Storage Stability :</b>	-15°C to -25°C/1 year(Do not lower than -25°C)
<b>Observed Band :</b>	44kD
<b>Cell Pathway :</b>	Calcium;Neuroactive ligand-receptor interaction;
<b>Background :</b>	The product of this gene belongs to the family of purinoceptors for ATP. This receptor functions as a ligand-gated ion channel and may transduce ATP-evoked nociceptor activation. Mouse studies suggest that this receptor is important for peripheral pain responses, and also participates in pathways controlling urinary bladder volume reflexes. It is possible that the development of selective antagonists for this receptor may have a therapeutic potential in pain relief and in the treatment of disorders of urine storage. [provided by RefSeq, Jul 2008],
<b>Function :</b>	function:Receptor for ATP that acts as a ligand gated ion channel.,online information:P2X receptor entry,similarity:Belongs to the P2X receptor family.,subunit:Homo- or heteropolymers.,
<b>Subcellular Location :</b>	Cell membrane ; Multi-pass membrane protein .
<b>Expression :</b>	Heart,
<b>Sort :</b>	11393
<b>No4 :</b>	1
<b>Host :</b>	Rabbit
<b>Modifications :</b>	Unmodified

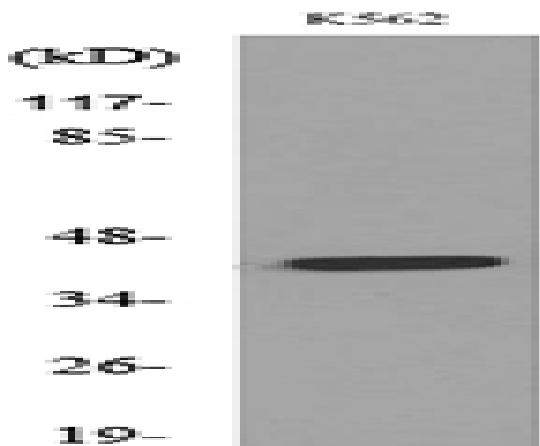
## Products Images



Western Blot analysis of K562 cells using P2X3 Polyclonal Antibody. Secondary antibody(catalog#:RS0002) was diluted at 1:20000



Immunohistochemical analysis of paraffin-embedded human-heart, antibody was diluted at 1:100



Western blot analysis of lysate from K562 cells, using P2RX3 Antibody.