

## MCM3 Polyclonal Antibody

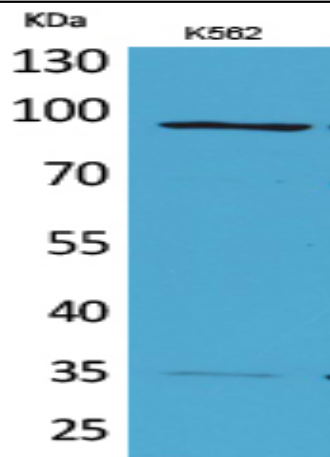
<b>Catalog No :</b>	YT5217
<b>Reactivity :</b>	Human;Mouse
<b>Applications :</b>	WB;IHC;IF;ELISA
<b>Target :</b>	MCM3
<b>Fields :</b>	>>DNA replication;>>Cell cycle
<b>Gene Name :</b>	MCM3
<b>Protein Name :</b>	DNA replication licensing factor MCM3
<b>Human Gene Id :</b>	4172
<b>Human Swiss Prot No :</b>	P25205
<b>Mouse Swiss Prot No :</b>	P25206
<b>Immunogen :</b>	The antiserum was produced against synthesized peptide derived from the Internal region of human MCM3. AA range:641-690
<b>Specificity :</b>	MCM3 Polyclonal Antibody detects endogenous levels of MCM3 protein.
<b>Formulation :</b>	Liquid in PBS containing 50% glycerol, 0.5% BSA and 0.02% sodium azide.
<b>Source :</b>	Polyclonal, Rabbit,IgG
<b>Dilution :</b>	WB 1:500 - 1:2000. IHC: 1:100-300 ELISA: 1:20000.. IF 1:50-200
<b>Purification :</b>	The antibody was affinity-purified from rabbit antiserum by affinity-chromatography using epitope-specific immunogen.
<b>Concentration :</b>	1 mg/ml
<b>Storage Stability :</b>	-15°C to -25°C/1 year(Do not lower than -25°C)

---

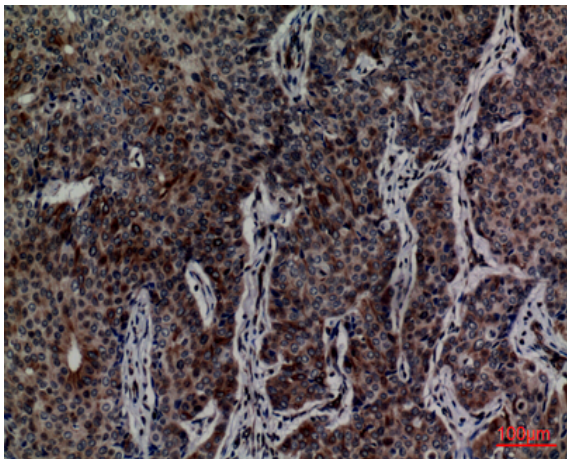
<b>Observed Band :</b>	89kD
<b>Cell Pathway :</b>	DNA replication;Cell_Cycle_G1S;Cell_Cycle_G2M_DNA;
<b>Background :</b>	<p>The protein encoded by this gene is one of the highly conserved mini-chromosome maintenance proteins (MCM) that are involved in the initiation of eukaryotic genome replication. The hexameric protein complex formed by MCM proteins is a key component of the pre-replication complex (pre_RC) and may be involved in the formation of replication forks and in the recruitment of other DNA replication related proteins. This protein is a subunit of the protein complex that consists of MCM2-7. It has been shown to interact directly with MCM5/CDC46. This protein also interacts with and is acetylated by MCM3AP, a chromatin-associated acetyltransferase. The acetylation of this protein inhibits the initiation of DNA replication and cell cycle progression. Two transcript variants encoding different isoforms have been found for this gene. [provided by RefSeq, Jul 2012],</p>
<b>Function :</b>	<p>function:Acts as a factor that allows the DNA to undergo a single round of replication per cell cycle. Required for DNA replication and cell proliferation.,miscellaneous:Associated with the replication-specific DNA polymerase alpha.,PTM:Phosphorylated upon DNA damage, probably by ATM or ATR.,similarity:Belongs to the MCM family.,similarity:Contains 1 MCM domain.,</p>
<b>Subcellular Location :</b>	Nucleus . Chromosome . Associated with chromatin before the formation of nuclei and detaches from it as DNA replication progresses. .
<b>Expression :</b>	Cervix,Coronary artery,Epithelium,Lymph,Osteosarcoma,Pancre
<b>Tag :</b>	hot
<b>Sort :</b>	9465
<b>No4 :</b>	1
<b>Host :</b>	Rabbit
<b>Modifications :</b>	Unmodified

---

## Products Images



Western Blot analysis of K562 cells using MCM3 Polyclonal Antibody. Secondary antibody(catalog#:RS0002) was diluted at 1:20000



Immunohistochemical analysis of paraffin-embedded human-breast-cancer, antibody was diluted at 1:100