

## CD7 Polyclonal Antibody

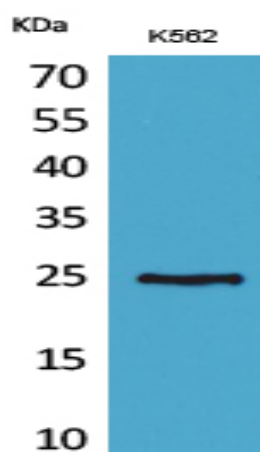
|                              |   |
|------------------------------|---|
| <b>Catalog No :</b>          | YT5242  |
| <b>Reactivity :</b>          | Human;Mouse   |
| <b>Applications :</b>        | WB;IHC;IF;ELISA   |
| <b>Target :</b>              | CD7   |
| <b>Fields :</b>              | >>Hematopoietic cell lineage  |
| <b>Gene Name :</b>           | CD7   |
| <b>Protein Name :</b>        | T-cell antigen CD7  |
| <b>Human Gene Id :</b>       | 924   |
| <b>Human Swiss Prot No :</b> | P09564  |
| <b>Mouse Swiss Prot No :</b> | P50283  |
| <b>Immunogen :</b>           | The antiserum was produced against synthesized peptide derived from the Internal region of human CD7. AA range:51-100 |
| <b>Specificity :</b>         | CD7 Polyclonal Antibody detects endogenous levels of CD7 protein.   |
| <b>Formulation :</b>         | Liquid in PBS containing 50% glycerol, 0.5% BSA and 0.02% sodium azide.   |
| <b>Source :</b>              | Polyclonal, Rabbit,IgG  |
| <b>Dilution :</b>            | WB 1:500 - 1:2000. IHC: 1:100-300 ELISA: 1:20000.. IF 1:50-200  |
| <b>Purification :</b>        | The antibody was affinity-purified from rabbit antiserum by affinity-chromatography using epitope-specific immunogen. |
| <b>Concentration :</b>       | 1 mg/ml   |
| <b>Storage Stability :</b>   | -15°C to -25°C/1 year(Do not lower than -25°C)  |

---

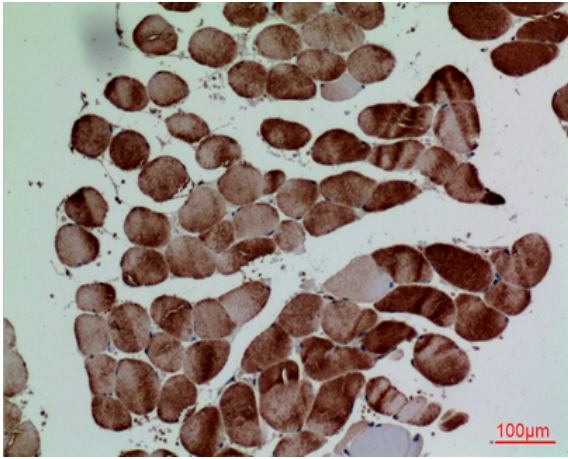
|                               |   |
|-------------------------------|---|
| <b>Observed Band :</b>        | 25kD  |
| <b>Cell Pathway :</b>         | Hematopoietic cell lineage;   |
| <b>Background :</b>           | This gene encodes a transmembrane protein which is a member of the immunoglobulin superfamily. This protein is found on thymocytes and mature T cells. It plays an essential role in T-cell interactions and also in T-cell/B-cell interaction during early lymphoid development. [provided by RefSeq, Jul 2008], |
| <b>Function :</b>             | function:Not yet known.,similarity:Contains 1 Ig-like (immunoglobulin-like) domain.,subunit:Interacts with SECTM1.,   |
| <b>Subcellular Location :</b> | Membrane; Single-pass type I membrane protein.  |
| <b>Expression :</b>           | Liver,Muscle,Spleen,  |
| <b>Sort :</b>                 | 84  |
| <b>No4 :</b>                  | 1   |
| <b>Host :</b>                 | Rabbit  |
| <b>Modifications :</b>        | Unmodified  |

---

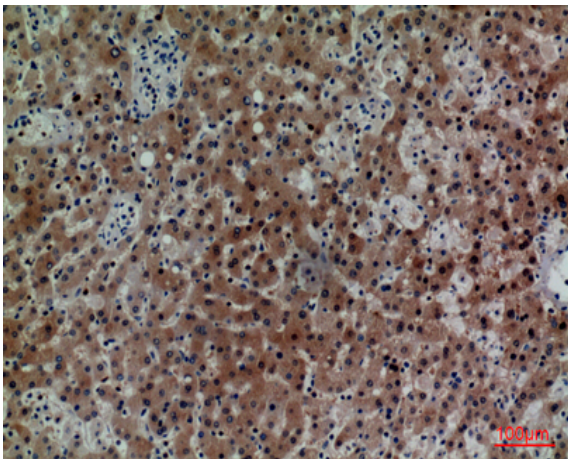
## Products Images



Western Blot analysis of K562 cells using CD7 Polyclonal Antibody. Secondary antibody(catalog#:RS0002) was diluted at 1:20000



Immunohistochemical analysis of paraffin-embedded human-muscle, antibody was diluted at 1:100



Immunohistochemical analysis of paraffin-embedded human-liver, antibody was diluted at 1:100

Western blot analysis of lysate from K562 cells, using CD7 Antibody.