

CD58 Polyclonal Antibody

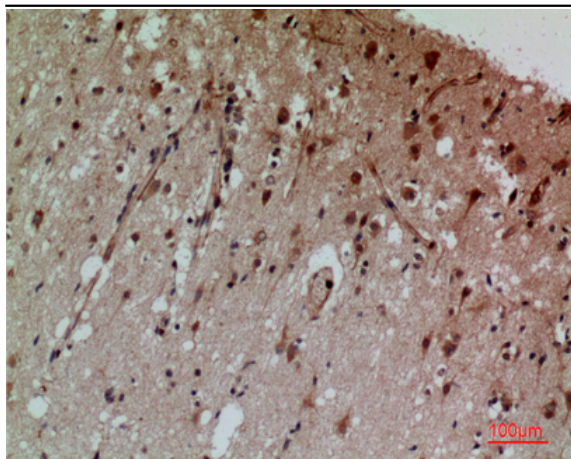
Catalog No :	YT5251
Reactivity :	Human
Applications :	WB;IHC;IF;ELISA
Target :	CD58
Fields :	>>Cell adhesion molecules;>>Epstein-Barr virus infection
Gene Name :	CD58
Protein Name :	Lymphocyte function-associated antigen 3
Human Gene Id :	965
Human Swiss Prot No :	P19256
Immunogen :	The antiserum was produced against synthesized peptide derived from the Internal region of human CD58. AA range:31-80
Specificity :	CD58 Polyclonal Antibody detects endogenous levels of CD58 protein.
Formulation :	Liquid in PBS containing 50% glycerol, 0.5% BSA and 0.02% sodium azide.
Source :	Polyclonal, Rabbit,IgG
Dilution :	WB 1:500 - 1:2000. IHC: 1:100-300 ELISA: 1:20000.. IF 1:50-200
Purification :	The antibody was affinity-purified from rabbit antiserum by affinity-chromatography using epitope-specific immunogen.
Concentration :	1 mg/ml
Storage Stability :	-15°C to -25°C/1 year(Do not lower than -25°C)
Observed Band :	27kD

Cell Pathway :	Cell adhesion molecules (CAMs);
Background :	This gene encodes a member of the immunoglobulin superfamily. The encoded protein is a ligand of the T lymphocyte CD2 protein, and functions in adhesion and activation of T lymphocytes. The protein is localized to the plasma membrane. Alternatively spliced transcript variants have been described. [provided by RefSeq, Jan 2009],
Function :	function:Ligand of the T-lymphocyte CD2 glycoprotein. This interaction is important in mediating thymocyte interactions with thymic epithelial cells, antigen-independent and -dependent interactions of T-lymphocytes with target cells and antigen-presenting cells and the T-lymphocyte rosetting with erythrocytes. In addition, the LFA-3/CD2 interaction may prime response by both the CD2+ and LFA-3+ cells.,similarity:Contains 1 Ig-like C2-type (immunoglobulin-like) domain.,
Subcellular Location :	[Isoform 1]: Cell membrane; Single-pass type I membrane protein.
Expression :	Brain,Erythrocyte,
Tag :	hot
Sort :	3623
No4 :	1
Host :	Rabbit
Modifications :	Unmodified

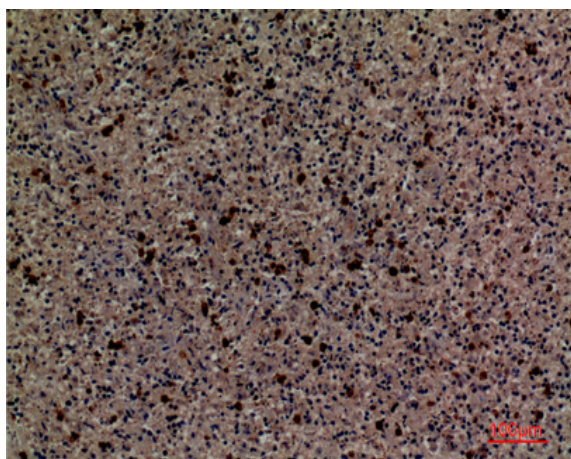
Products Images



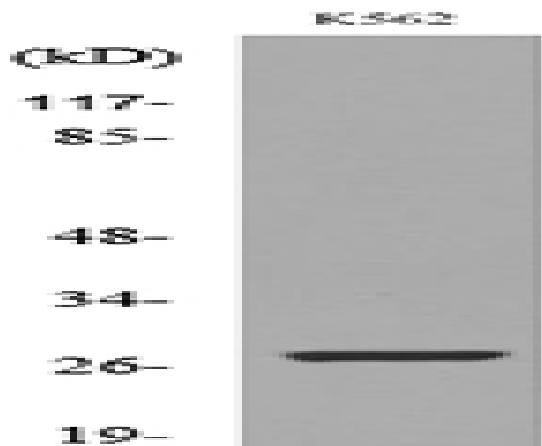
Western Blot analysis of K562 cells using CD58 Polyclonal Antibody. Secondary antibody(catalog#:RS0002) was diluted at 1:20000



Immunohistochemical analysis of paraffin-embedded human-brain, antibody was diluted at 1:100



Immunohistochemical analysis of paraffin-embedded human-spleen, antibody was diluted at 1:100



Western blot analysis of lysate from K562 cells, using CD58 Antibody.