

## PSG1 Polyclonal Antibody

<b>Catalog No :</b>	YT5253
<b>Reactivity :</b>	Human
<b>Applications :</b>	WB;IHC;IF;ELISA
<b>Target :</b>	PSG1
<b>Gene Name :</b>	PSG1
<b>Protein Name :</b>	Pregnancy-specific beta-1-glycoprotein 1
<b>Human Gene Id :</b>	5669
<b>Human Swiss Prot No :</b>	P11464
<b>Immunogen :</b>	The antiserum was produced against synthesized peptide derived from the Internal region of human PSG1. AA range:221-270
<b>Specificity :</b>	PSG1 Polyclonal Antibody detects endogenous levels of PSG1 protein.
<b>Formulation :</b>	Liquid in PBS containing 50% glycerol, 0.5% BSA and 0.02% sodium azide.
<b>Source :</b>	Polyclonal, Rabbit,IgG
<b>Dilution :</b>	WB 1:500 - 1:2000. IHC: 1:100-300 ELISA: 1:20000.. IF 1:50-200
<b>Purification :</b>	The antibody was affinity-purified from rabbit antiserum by affinity-chromatography using epitope-specific immunogen.
<b>Concentration :</b>	1 mg/ml
<b>Storage Stability :</b>	-15°C to -25°C/1 year(Do not lower than -25°C)
<b>Observed Band :</b>	46kD
<b>Background :</b>	The human placenta is a multihormonal endocrine organ that produces hormones, enzymes, and other molecules that support fetal survival and

development. Pregnancy-specific beta-1-glycoprotein (PSBG, PSG) is a major product of the syncytiotrophoblast, reaching concentrations of 100 to 290 mg/l at term in the serum of pregnant women (Horne et al., 1976 [PubMed 971765]). PSG is a member of the immunoglobulin (Ig) superfamily (Watanabe and Chou, 1988 [PubMed 3257488]; Streydio et al., 1988 [PubMed 3260773]).[supplied by OMIM, Oct 2009],

**Function :**

developmental stage:PSBG are produced in high quantity during pregnancy.,similarity:Belongs to the immunoglobulin superfamily. CEA family.,similarity:Contains 1 Ig-like V-type (immunoglobulin-like) domain.,similarity:Contains 3 Ig-like C2-type (immunoglobulin-like) domains.,

**Subcellular Location :**

Secreted .

**Expression :**

Liver,Placenta,

**Sort :**

13114

**No4 :**

1

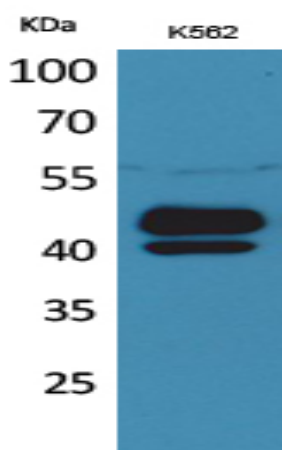
**Host :**

Rabbit

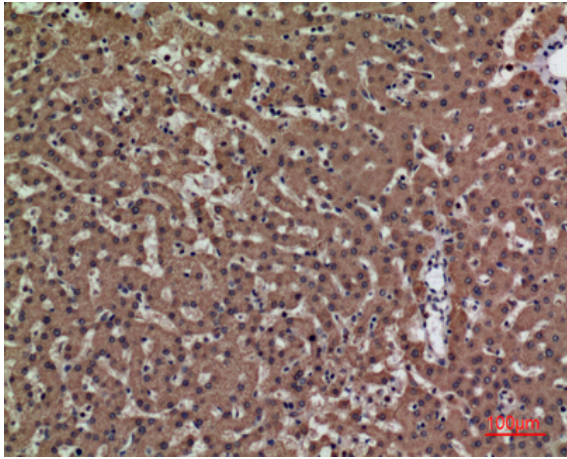
**Modifications :**

Unmodified

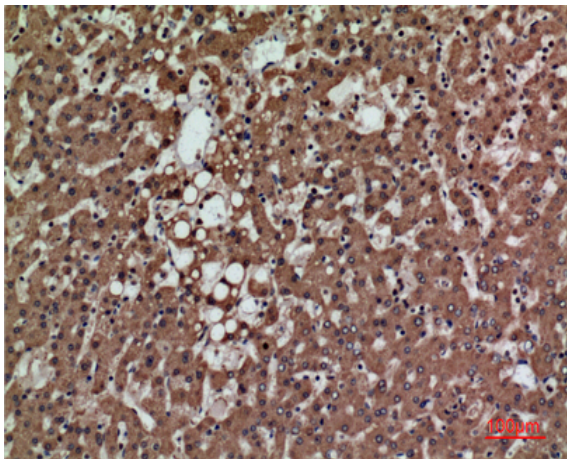
## Products Images



Western Blot analysis of K562 cells using PSG1 Polyclonal Antibody. Secondary antibody(catalog#:RS0002) was diluted at 1:20000



Immunohistochemical analysis of paraffin-embedded human-liver, antibody was diluted at 1:100



Immunohistochemical analysis of paraffin-embedded human-liver, antibody was diluted at 1:100