

PSP Polyclonal Antibody

Catalog No :	YT5295
Reactivity :	Human;Rat;Mouse;
Applications :	WB;ELISA;IHC
Target :	PSP
Gene Name :	PSPN
Protein Name :	Persephin
Human Gene Id :	5623
Human Swiss Prot No :	O60542
Mouse Swiss Prot No :	O70300
Rat Gene Id :	25525
Rat Swiss Prot No :	O70301
Immunogen :	The antiserum was produced against synthesized peptide derived from the C-terminal region of human PSPN. AA range:101-150
Specificity :	PSP Polyclonal Antibody detects endogenous levels of PSP protein.
Formulation :	Liquid in PBS containing 50% glycerol, 0.5% BSA and 0.02% sodium azide.
Source :	Polyclonal, Rabbit,IgG
Dilution :	WB 1:500-2000;IHC 1:50-300; ELISA 2000-20000
Purification :	The antibody was affinity-purified from rabbit antiserum by affinity-chromatography using epitope-specific immunogen.
Concentration :	1 mg/ml

Storage Stability : -15°C to -25°C/1 year(Do not lower than -25°C)

Observed Band : 16kD

Background : persephin(PSPN) Homo sapiens This gene encodes a secreted ligand of the GDNF (glial cell line-derived neurotrophic factor) subfamily and TGF-beta (transforming growth factor-beta) superfamily of proteins. The encoded preproprotein is proteolytically processed to generate the mature protein. This protein signals through the RET receptor tyrosine kinase and a GPI-linked coreceptor, and promotes survival of neuronal populations. This protein may play a role in cell death, and nervous system development and function. Elevated expression of this gene has been observed in oral squamous cell carcinoma. [provided by RefSeq, Aug 2016],

Function : function:Exhibits neurotrophic activity on mesencephalic dopaminergic and motor neurons.,similarity:Belongs to the TGF-beta family. GDNF subfamily.,subunit:Homodimer; disulfide-linked.,

Subcellular Location : Secreted.

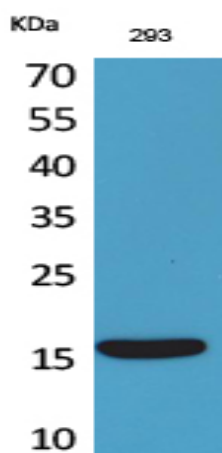
Sort : 13132

No4 : 1

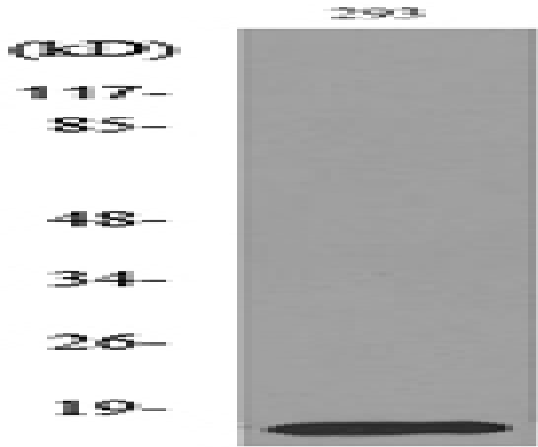
Host : Rabbit

Modifications : Unmodified

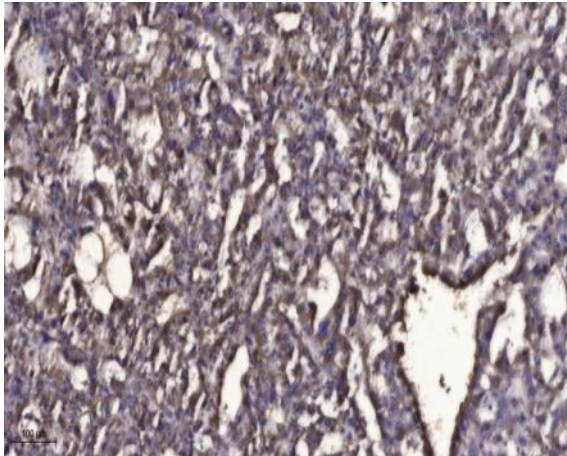
Products Images



Western Blot analysis of 293 cells using PSP Polyclonal Antibody. Secondary antibody(catalog#:RS0002) was diluted at 1:20000



Western blot analysis of lysate from 293 cells, using PSPN Antibody.



Immunohistochemical analysis of paraffin-embedded human liver cancer. 1, Antibody was diluted at 1:200(4° overnight). 2, Tris-EDTA,pH9.0 was used for antigen retrieval. 3,Secondary antibody was diluted at 1:200(room temperature, 45min).