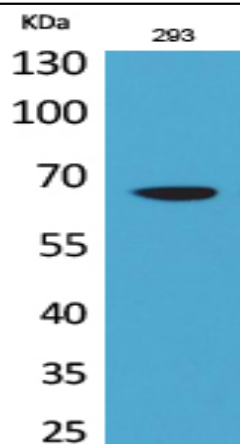


VGF Polyclonal Antibody

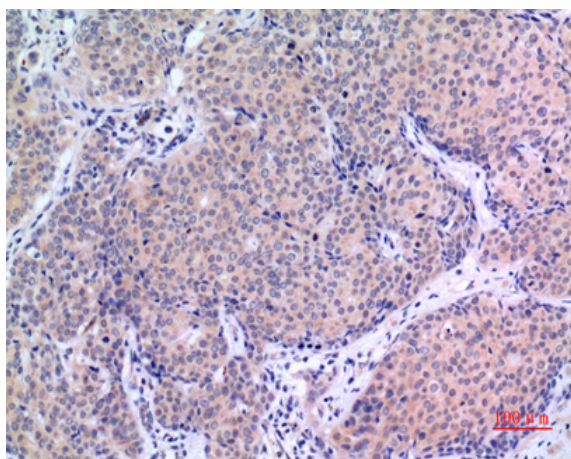
Catalog No :	YT5296
Reactivity :	Human;Mouse;Rat
Applications :	WB;IHC;IF;ELISA
Target :	VGF
Fields :	>>Neuroactive ligand-receptor interaction
Gene Name :	VGF
Protein Name :	Neurosecretory protein VGF
Human Gene Id :	7425
Human Swiss Prot No :	O15240
Rat Gene Id :	29461
Rat Swiss Prot No :	P20156
Immunogen :	The antiserum was produced against synthesized peptide derived from the Internal region of human VGF. AA range:451-500
Specificity :	VGF Polyclonal Antibody detects endogenous levels of VGF protein.
Formulation :	Liquid in PBS containing 50% glycerol, 0.5% BSA and 0.02% sodium azide.
Source :	Polyclonal, Rabbit,IgG
Dilution :	WB 1:500 - 1:2000. IHC: 1:100-1:300. ELISA: 1:20000.. IF 1:50-200
Purification :	The antibody was affinity-purified from rabbit antiserum by affinity-chromatography using epitope-specific immunogen.
Concentration :	1 mg/ml

Storage Stability :	-15°C to -25°C/1 year(Do not lower than -25°C)
Observed Band :	67kD
Background :	This gene is specifically expressed in a subpopulation of neuroendocrine cells, and is upregulated by nerve growth factor. The structural organization of this gene is similar to that of the rat gene, and both the translated and the untranslated regions show a high degree of sequence similarity to the rat gene. The encoded secretory protein also shares similarities with the secretogranin/chromogranin family, however, its exact function is not known. [provided by RefSeq, Jul 2008],
Function :	function:May be involved in the regulation of cell-cell interactions or in synatogenesis during the maturation of the nervous system.,subcellular location:Stored in secretory vesicles and then secreted.,tissue specificity:Expressed in brain.,
Subcellular Location :	[Neurosecretory protein VGF]: Secreted . Cytoplasmic vesicle, secretory vesicle . Stored in secretory vesicles and then secreted, NERP peptides colocalize with vasopressin in the storage granules of hypothalamus.
Expression :	Central and peripheral nervous systems, synthesized exclusively in neuronal and neuroendocrine cells.
Tag :	hot
Sort :	24131
No4 :	1
Host :	Rabbit
Modifications :	Unmodified

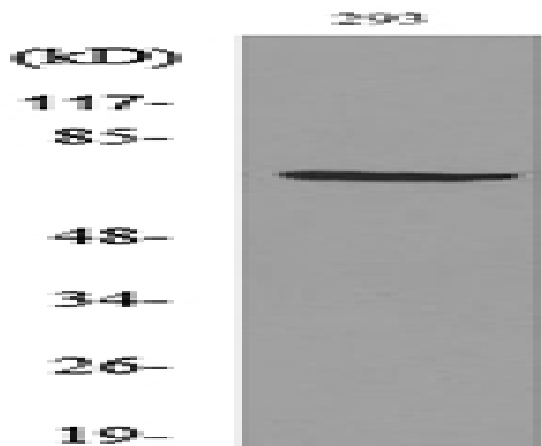
Products Images



Western Blot analysis of 293 cells using VGF Polyclonal Antibody. Secondary antibody(catalog#:RS0002) was diluted at 1:20000



Immunohistochemical analysis of paraffin-embedded human-mammary-cancer, antibody was diluted at 1:100



Western blot analysis of lysate from 293 cells, using VGF Antibody.