

IL-29 Polyclonal Antibody

Catalog No :	YT5298
Reactivity :	Human
Applications :	WB;ELISA
Target :	IL-29
Fields :	>>Cytokine-cytokine receptor interaction;>>JAK-STAT signaling pathway
Gene Name :	IL29
Protein Name :	Interleukin-29
Human Gene Id :	282618
Human Swiss Prot No :	Q8IU54
Immunogen :	The antiserum was produced against synthesized peptide derived from the Internal region of human IL29. AA range:121-170
Specificity :	IL-29 Polyclonal Antibody detects endogenous levels of IL-29 protein.
Formulation :	Liquid in PBS containing 50% glycerol, 0.5% BSA and 0.02% sodium azide.
Source :	Polyclonal, Rabbit,IgG
Dilution :	WB 1:500 - 1:2000. ELISA: 1:20000. Not yet tested in other applications.
Purification :	The antibody was affinity-purified from rabbit antiserum by affinity-chromatography using epitope-specific immunogen.
Concentration :	1 mg/ml
Storage Stability :	-15°C to -25°C/1 year(Do not lower than -25°C)
Observed Band :	21kD

Cell Pathway : Cytokine-cytokine receptor interaction;Jak_STAT;

Background : This gene encodes a cytokine distantly related to type I interferons and the IL-10 family. This gene, interleukin 28A (IL28A), and interleukin 28B (IL28B) are three closely related cytokine genes that form a cytokine gene cluster on a chromosomal region mapped to 19q13. Expression of the cytokines encoded by the three genes can be induced by viral infection. All three cytokines have been shown to interact with a heterodimeric class II cytokine receptor that consists of interleukin 10 receptor, beta (IL10RB) and interleukin 28 receptor, alpha (IL28RA). [provided by RefSeq, Jul 2008],

Function : function:Cytokine with immunomodulatory activity. May play a role in antiviral immunity. Up-regulates MHC class I antigen expression. Ligand for the heterodimeric class II cytokine receptor composed of IL10RB and IL28RA. The ligand/receptor complex seems to signal through the Jak-STAT pathway.,induction:By viral infections or double stranded RNA.,online information:Interleukin-29 entry,similarity:Belongs to the IL-28/IL-29 family.,

Subcellular Location : Secreted.

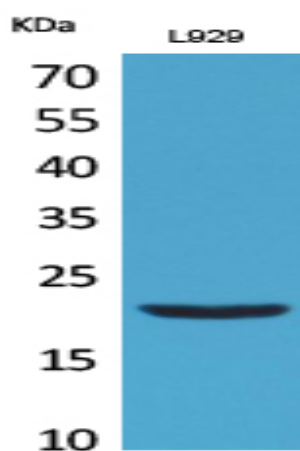
Sort : 8490

No4 : 1

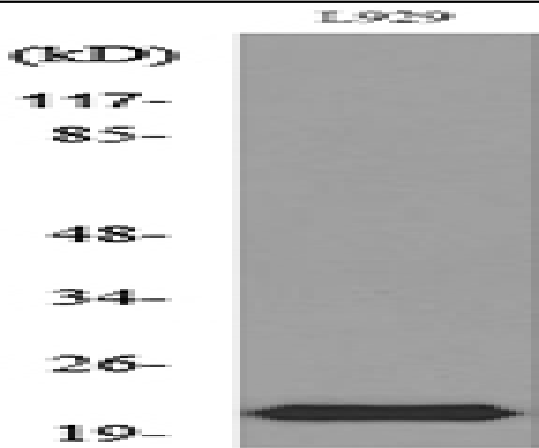
Host : Rabbit

Modifications : Unmodified

Products Images



Western Blot analysis of L929 cells using IL-29 Polyclonal Antibody. Secondary antibody(catalog#:RS0002) was diluted at 1:20000



Western blot analysis of lysate from L929 cells, using IL29 Antibody.