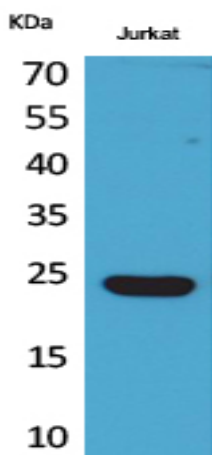


IFN- ϵ Polyclonal Antibody

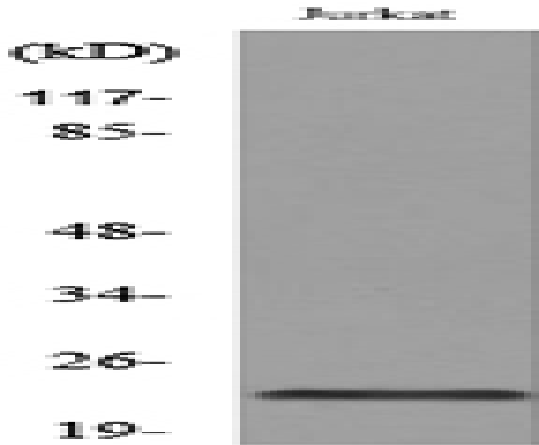
Catalog No :	YT5304
Reactivity :	Human;Mouse
Applications :	WB;ELISA
Target :	IFN- ϵ
Fields :	>>Cytokine-cytokine receptor interaction;>>RIG-I-like receptor signaling pathway;>>JAK-STAT signaling pathway
Gene Name :	IFNE
Protein Name :	Interferon epsilon
Human Gene Id :	338376
Human Swiss Prot No :	Q86WN2
Mouse Gene Id :	230405
Mouse Swiss Prot No :	Q80ZF2
Immunogen :	The antiserum was produced against synthesized peptide derived from the C-terminal region of human IFNE. AA range:159-208
Specificity :	IFN- ϵ Polyclonal Antibody detects endogenous levels of IFN- ϵ protein.
Formulation :	Liquid in PBS containing 50% glycerol, 0.5% BSA and 0.02% sodium azide.
Source :	Polyclonal, Rabbit,IgG
Dilution :	WB 1:500 - 1:2000. ELISA: 1:20000. Not yet tested in other applications.
Purification :	The antibody was affinity-purified from rabbit antiserum by affinity-chromatography using epitope-specific immunogen.
Concentration :	1 mg/ml

Storage Stability :	<u>-15°C to -25°C/1 year(Do not lower than -25°C)</u>
Observed Band :	<u>24kD</u>
Cell Pathway :	<u>Cytokine-cytokine receptor interaction;RIG-I-like receptor;Jak_STAT;</u>
Background :	<u>similarity:Belongs to the alpha/beta interferon family.,tissue specificity:Expressed in prostate cancer cell line PC-3, amnion-derived WISH cells, SK-MEL28 melanoma cells and Daudi cells and very weakly in MCF-7 human breast cancer cells. Not detected in Namalwa cells (Burkitt's lymphoma) or in Jurkat (T) cells.,</u>
Function :	<u>similarity:Belongs to the alpha/beta interferon family.,tissue specificity:Expressed in prostate cancer cell line PC-3, amnion-derived WISH cells, SK-MEL28 melanoma cells and Daudi cells and very weakly in MCF-7 human breast cancer cells. Not detected in Namalwa cells (Burkitt's lymphoma) or in Jurkat (T) cells.,</u>
Subcellular Location :	<u>Secreted .</u>
Expression :	<u>Endometrium-specific.</u>
Sort :	<u>8333</u>
No4 :	<u>1</u>
Host :	<u>Rabbit</u>
Modifications :	<u>Unmodified</u>

Products Images



Western Blot analysis of Jurkat cells using IFN- ϵ Polyclonal Antibody. Secondary antibody(catalog#:RS0002) was diluted at 1:20000



Western blot analysis of lysate from Jurkat cells, using IFNE Antibody.