

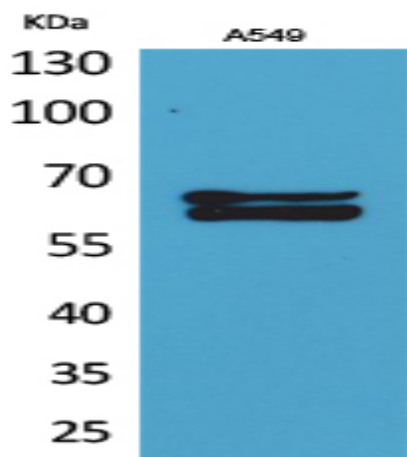
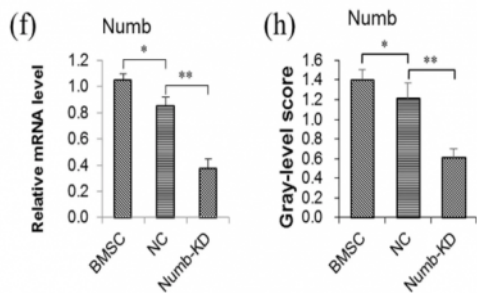
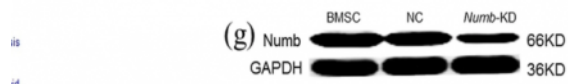
NUMB Polyclonal Antibody

Catalog No :	YT5320
Reactivity :	Human;Mouse;Rat
Applications :	WB;IF;ELISA
Target :	NUMB
Fields :	>>Notch signaling pathway
Gene Name :	NUMB
Protein Name :	Protein numb homolog
Human Gene Id :	8650
Human Swiss Prot No :	P49757
Mouse Gene Id :	18222
Mouse Swiss Prot No :	Q9QZS3
Rat Swiss Prot No :	Q2LC84
Immunogen :	Synthesized peptide derived from the Internal region of human NUMB.
Specificity :	NUMB Polyclonal Antibody detects endogenous levels of NUMB protein.
Formulation :	Liquid in PBS containing 50% glycerol, 0.5% BSA and 0.02% sodium azide.
Source :	Polyclonal, Rabbit,IgG
Dilution :	WB 1:500-2000; IF ICC 1:100-500;ELISA 1:5000-20000
Purification :	The antibody was affinity-purified from rabbit antiserum by affinity-chromatography using epitope-specific immunogen.

Concentration :	1 mg/ml
Storage Stability :	-15°C to -25°C/1 year(Do not lower than -25°C)
Observed Band :	70kD
Cell Pathway :	Notch;
Background :	The protein encoded by this gene plays a role in the determination of cell fates during development. The encoded protein, whose degradation is induced in a proteasome-dependent manner by MDM2, is a membrane-bound protein that has been shown to associate with EPS15, LNX1, and NOTCH1. Alternative splicing results in multiple transcript variants. [provided by RefSeq, Feb 2016],
Function :	function:Implicated in the control of cell fate decisions during development.,PTM:Isoform 1 and isoform 2 are ubiquitinated by LNX leading to their subsequent proteasomal degradation (By similarity). Ubiquitinated; mediated by SIAH1 and leading to its subsequent proteasomal degradation.,sequence caution:Intron retention.,similarity:Contains 1 PID domain.,subunit:Interacts with EPS15, LNX and NOTCH1. May interact with DUOXA1. Interacts with RALBP1 in a complex also containing EPN1 and TFAP2A during interphase and mitosis.,
Subcellular Location :	Cell membrane ; Peripheral membrane protein ; Cytoplasmic side . Endosome membrane ; Peripheral membrane protein ; Cytoplasmic side . Localizes to perinuclear endosomes in an AAK1-dependent manner. .
Expression :	B cells,Blood,Brain,Cervix carcinoma,Epithelium,Fetal brain,HeLa cells,Live
Tag :	orthogonal,knockdown
Sort :	1114
No4 :	1
Host :	Rabbit
Modifications :	Unmodified

Products Images

Xu, W., Xu, Yn., Zhang, X. et al. Hepatic stem cell Numb gene is a potential target of Huang Qi Decoction against cholestatic liver fibrosis. *Sci Rep* 10, 17486 (2020).



Western Blot analysis of A549 cells using NUMB Polyclonal Antibody. Secondary antibody(catalog#:RS0002) was diluted at 1:20000