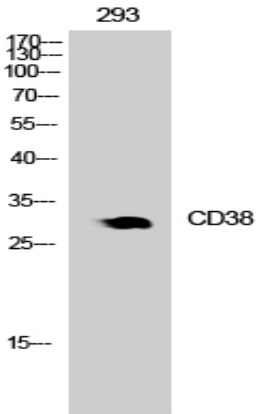


CD38 Polyclonal Antibody

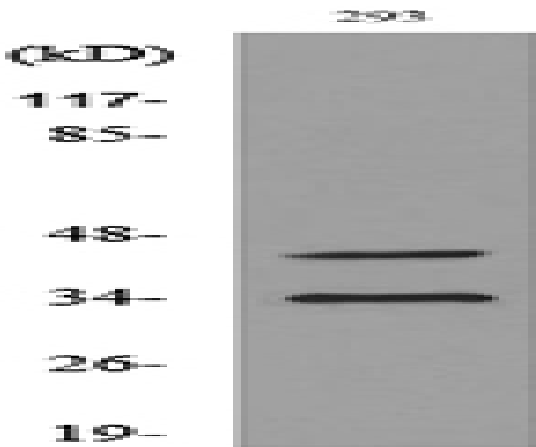
Catalog No :	YT5392
Reactivity :	Human;Rat;Mouse;
Applications :	WB;IHC;IF;ELISA
Target :	CD38
Fields :	>>Nicotinate and nicotinamide metabolism;>>Metabolic pathways;>>Calcium signaling pathway;>>Hematopoietic cell lineage;>>Oxytocin signaling pathway;>>Salivary secretion;>>Pancreatic secretion
Gene Name :	CD38
Protein Name :	ADP-ribosyl cyclase 1
Human Gene Id :	952
Human Swiss Prot No :	P28907
Mouse Swiss Prot No :	P56528
Immunogen :	The antiserum was produced against synthesized peptide derived from the Internal region of human CD38. AA range:211-260
Specificity :	CD38 Polyclonal Antibody detects endogenous levels of CD38 protein.
Formulation :	Liquid in PBS containing 50% glycerol, 0.5% BSA and 0.02% sodium azide.
Source :	Polyclonal, Rabbit,IgG
Dilution :	WB 1:500 - 1:2000. IHC: 1:100-1:300. ELISA: 1:20000.. IF 1:50-200
Purification :	The antibody was affinity-purified from rabbit antiserum by affinity-chromatography using epitope-specific immunogen.
Concentration :	1 mg/ml

Storage Stability :	<u>-15°C to -25°C/1 year(Do not lower than -25°C)</u>
Observed Band :	<u>35kD</u>
Cell Pathway :	<u>Nicotinate and nicotinamide metabolism;Calcium;Hematopoietic cell lineage;</u>
Background :	<u>The protein encoded by this gene is a non-lineage-restricted, type II transmembrane glycoprotein that synthesizes and hydrolyzes cyclic adenosine 5'-diphosphate-ribose, an intracellular calcium ion mobilizing messenger. The release of soluble protein and the ability of membrane-bound protein to become internalized indicate both extracellular and intracellular functions for the protein. This protein has an N-terminal cytoplasmic tail, a single membrane-spanning domain, and a C-terminal extracellular region with four N-glycosylation sites. Crystal structure analysis demonstrates that the functional molecule is a dimer, with the central portion containing the catalytic site. It is used as a prognostic marker for patients with chronic lymphocytic leukemia. Alternative splicing results in multiple transcript variants. [provided by RefSeq, Sep 2015],</u>
Function :	<u>catalytic activity:NAD(+) + H(2)O = ADP-ribose + nicotinamide.,developmental stage:Preferentially expressed at both early and late stages of the B and T-cell maturation. It is also detected on erythroid and myeloid progenitors in bone marrow, where the level of surface expression was shown to decrease during differentiation of blast-forming unit E to colony-forming unit E.,enzyme regulation:ATP inhibits the hydrolyzing activity.,function:Synthesizes cyclic ADP-ribose, a second messenger for glucose-induced insulin secretion. Also has cADPr hydrolase activity. Also moonlights as a receptor in cells of the immune system.,online information:CD38 entry,similarity:Belongs to the ADP-ribosyl cyclase family.,tissue specificity:Expressed at high levels in pancreas, liver, kidney, brain, testis, ovary, placenta, malignant lymphoma and neuroblastoma.,</u>
Subcellular Location :	<u>Membrane; Single-pass type II membrane protein.</u>
Expression :	<u>Expressed at high levels in pancreas, liver, kidney, brain, testis, ovary, placenta, malignant lymphoma and neuroblastoma.</u>
Tag :	<u>orthogonal</u>
Sort :	<u>3572</u>
No4 :	<u>1</u>
Host :	<u>Rabbit</u>
Modifications :	<u>Unmodified</u>

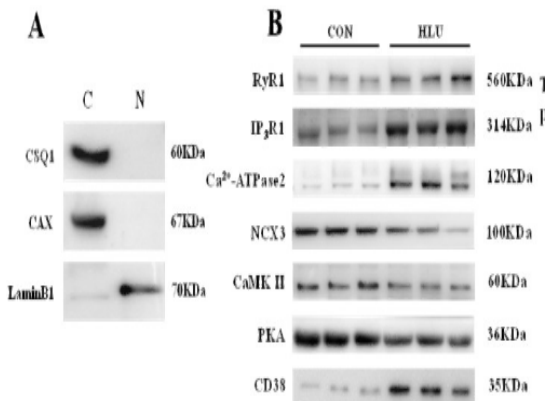
Products Images



Western Blot analysis of 293 cells using CD38 Polyclonal Antibody. Secondary antibody(catalog#:RS0002) was diluted at 1:20000 cells nucleus extracted by Minute TM Cytoplasmic and Nuclear Fractionation kit (SC-003, Inventbiotech, MN, USA).



Western blot analysis of lysate from 293 cells, using CD38 Antibody.



New Findings: Hindlimb Unloading Causes Nucleocytoplasmic Ca²⁺ Overload and DNA Damage in Skeletal Muscle Cells
Yunfang Gao WB Rat muscle cell