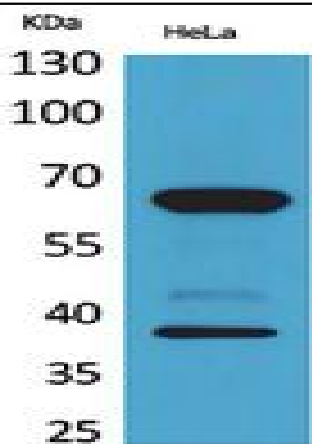


DNAM-1 Polyclonal Antibody

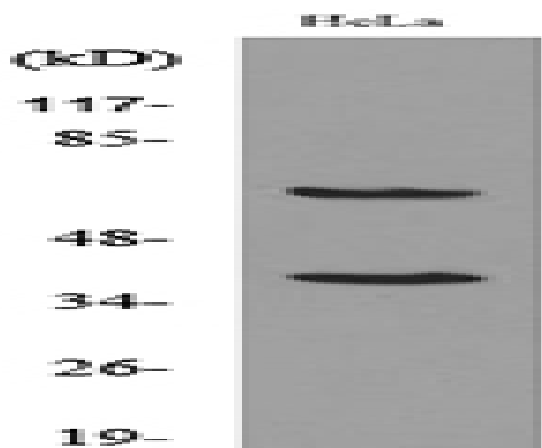
Catalog No :	YT5402
Reactivity :	Human;Mouse
Applications :	WB;ELISA
Target :	DNAM-1
Fields :	>>Cell adhesion molecules
Gene Name :	CD226
Protein Name :	CD226 antigen
Human Gene Id :	10666
Human Swiss Prot No :	Q15762
Mouse Gene Id :	225825
Mouse Swiss Prot No :	Q8K4F0
Immunogen :	The antiserum was produced against synthesized peptide derived from the Internal region of human CD226. AA range:71-120
Specificity :	DNAM-1 Polyclonal Antibody detects endogenous levels of DNAM-1 protein.
Formulation :	Liquid in PBS containing 50% glycerol, 0.5% BSA and 0.02% sodium azide.
Source :	Polyclonal, Rabbit,IgG
Dilution :	WB 1:500 - 1:2000. ELISA: 1:20000. Not yet tested in other applications.
Purification :	The antibody was affinity-purified from rabbit antiserum by affinity-chromatography using epitope-specific immunogen.
Concentration :	1 mg/ml

Storage Stability :	-15°C to -25°C/1 year(Do not lower than -25°C)
Observed Band :	38kD
Cell Pathway :	Cell adhesion molecules (CAMs);
Background :	This gene encodes a glycoprotein expressed on the surface of NK cells, platelets, monocytes and a subset of T cells. It is a member of the Ig-superfamily containing 2 Ig-like domains of the V-set. The protein mediates cellular adhesion of platelets and megakaryocytic cells to vascular endothelial cells. The protein also plays a role in megakaryocytic cell maturation. Alternative splicing results in multiple transcript variants. [provided by RefSeq, Jan 2015],
Function :	function:Receptor involved in intercellular adhesion, lymphocyte signaling, cytotoxicity and lymphokine secretion mediated by cytotoxic T-lymphocyte (CTL) and NK cell.,PTM:Phosphorylated.,similarity:Contains 2 Ig-like C2-type (immunoglobulin-like) domains.,subunit:Interacts with PVR and PVRL2.,tissue specificity:Expressed by peripheral blood T-lymphocytes.,
Subcellular Location :	Cell membrane ; Single-pass type I membrane protein .
Expression :	Expressed by peripheral blood T-lymphocytes.
Sort :	5192
No4 :	1
Host :	Rabbit
Modifications :	Unmodified

Products Images



Western Blot analysis of HeLa cells using DNAM-1 Polyclonal Antibody. Secondary antibody(catalog#:RS0002) was diluted at 1:20000



Western blot analysis of lysate from HeLa cells, using CD226 Antibody.