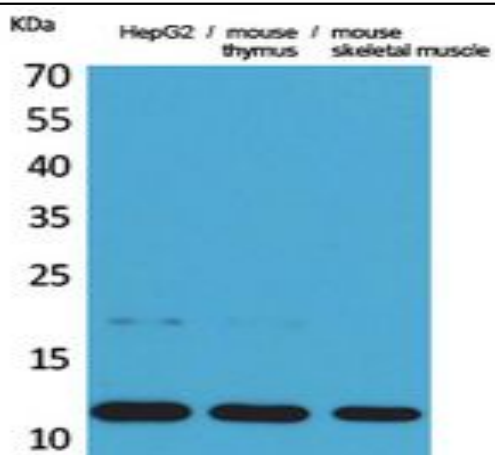


Eotaxin Polyclonal Antibody

Catalog No :	YT5444
Reactivity :	Human;Mouse;Rat
Applications :	WB;ELISA
Target :	Eotaxin
Fields :	>>Cytokine-cytokine receptor interaction;>>Viral protein interaction with cytokine and cytokine receptor;>>Chemokine signaling pathway;>>IL-17 signaling pathway;>>Asthma
Gene Name :	CCL11
Protein Name :	Eotaxin
Human Gene Id :	6356
Human Swiss Prot No :	P51671
Mouse Gene Id :	20292
Mouse Swiss Prot No :	P48298
Rat Gene Id :	29397
Rat Swiss Prot No :	P97545
Immunogen :	The antiserum was produced against synthesized peptide derived from the Internal region of human CCL11. AA range:41-90
Specificity :	Eotaxin Polyclonal Antibody detects endogenous levels of Eotaxin protein.
Formulation :	Liquid in PBS containing 50% glycerol, 0.5% BSA and 0.02% sodium azide.
Source :	Polyclonal, Rabbit,IgG
Dilution :	WB 1:500 - 1:2000. ELISA: 1:20000. Not yet tested in other applications.

Purification :	The antibody was affinity-purified from rabbit antiserum by affinity-chromatography using epitope-specific immunogen.
Concentration :	1 mg/ml
Storage Stability :	-15°C to -25°C/1 year(Do not lower than -25°C)
Observed Band :	11kD
Cell Pathway :	Cytokine-cytokine receptor interaction;Chemokine;NOD-like receptor;Asthma;
Background :	This antimicrobial gene is one of several chemokine genes clustered on the q-arm of chromosome 17. Chemokines form a superfamily of secreted proteins involved in immunoregulatory and inflammatory processes. The superfamily is divided into four subfamilies based on the arrangement of the N-terminal cysteine residues of the mature peptide. This chemokine, a member of the CC subfamily, displays chemotactic activity for eosinophils, but not mononuclear cells or neutrophils. This eosinophil-specific chemokine is thought to be involved in eosinophilic inflammatory diseases such as atopic dermatitis, allergic rhinitis, asthma and parasitic infections. [provided by RefSeq, Sep 2014],
Function :	function:In response to the presence of allergens, this protein directly promotes the accumulation of eosinophils, a prominent feature of allergic inflammatory reactions. Binds to CCR3.,induction:By TNF-alpha, interleukin-1 alpha and interferon gamma.,online information:CCL11 entry,PTM:O-linked glycan consists of a Gal-GalNAc disaccharide which is modified with up to 2 sialic acid residues.,similarity:Belongs to the intercrine beta (chemokine CC) family.,
Subcellular Location :	Secreted .
Expression :	Blood,Foreskin,Lung,Placenta,Small intestine,
Sort :	5577
No4 :	1
Host :	Rabbit
Modifications :	Unmodified

Products Images



Western Blot analysis of HepG2, mouse thymus, mouse skeletal muscle cells using Eotaxin Polyclonal Antibody. Secondary antibody(catalog#:RS0002) was diluted at 1:20000