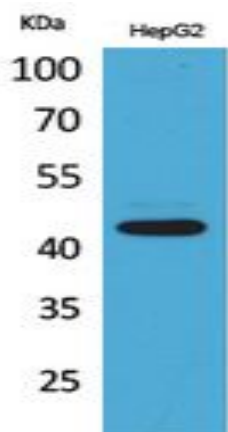


EP1 Polyclonal Antibody

Catalog No :	YT5447
Reactivity :	Human;Rat;Mouse;
Applications :	WB;ELISA
Target :	EP1
Fields :	>>Calcium signaling pathway;>>Neuroactive ligand-receptor interaction;>>Human cytomegalovirus infection;>>Pathways in cancer
Gene Name :	PTGER1
Protein Name :	Prostaglandin E2 receptor EP1 subtype
Human Gene Id :	5731
Human Swiss Prot No :	P34995
Mouse Swiss Prot No :	P35375
Immunogen :	The antiserum was produced against synthesized peptide derived from the Internal region of human PTGER1. AA range:191-240
Specificity :	EP1 Polyclonal Antibody detects endogenous levels of EP1 protein.
Formulation :	Liquid in PBS containing 50% glycerol, 0.5% BSA and 0.02% sodium azide.
Source :	Polyclonal, Rabbit,IgG
Dilution :	WB 1:500 - 1:2000. ELISA: 1:20000. Not yet tested in other applications.
Purification :	The antibody was affinity-purified from rabbit antiserum by affinity-chromatography using epitope-specific immunogen.
Concentration :	1 mg/ml
Storage Stability :	-15°C to -25°C/1 year(Do not lower than -25°C)

Observed Band :	44kD
Cell Pathway :	Calcium;Neuroactive ligand-receptor interaction;
Background :	<p>The protein encoded by this gene is a member of the G protein-coupled receptor family. This protein is one of four receptors identified for prostaglandin E2 (PGE2). Through a phosphatidylinositol-calcium second messenger system, G-Q proteins mediate this receptor's activity. Knockout studies in mice suggested a role of this receptor in mediating algesia and in regulation of blood pressure. Studies in mice also suggested that this gene may mediate adrenocorticotrophic hormone response to bacterial endotoxin. [provided by RefSeq, Jul 2008],</p>
Function :	<p>function:Receptor for prostaglandin E2 (PGE2). The activity of this receptor is mediated by G(q) proteins which activate a phosphatidylinositol-calcium second messenger system. May play a role as an important modulator of renal function. Implicated the smooth muscle contractile response to PGE2 in various tissues.,PTM:Phosphorylated .,similarity:Belongs to the G-protein coupled receptor 1 family.,tissue specificity:Abundant in kidney. Lower level expression in lung, skeletal muscle and spleen, lowest expression in testis and not detected in liver brain and heart.,</p>
Subcellular Location :	Cell membrane; Multi-pass membrane protein.
Expression :	Abundant in kidney. Lower level expression in lung, skeletal muscle and spleen, lowest expression in testis and not detected in liver brain and heart.
Sort :	5580
No4 :	1
Host :	Rabbit
Modifications :	Unmodified

Products Images



Western Blot analysis of HepG2 cells using EP1 Polyclonal Antibody. Secondary antibody(catalog#:RS0002) was diluted at 1:20000