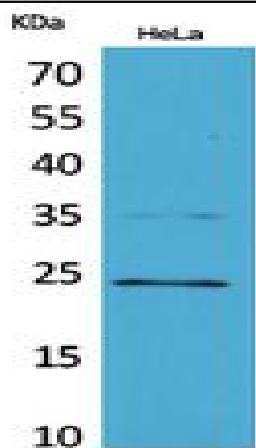


Rab 5A Polyclonal Antibody

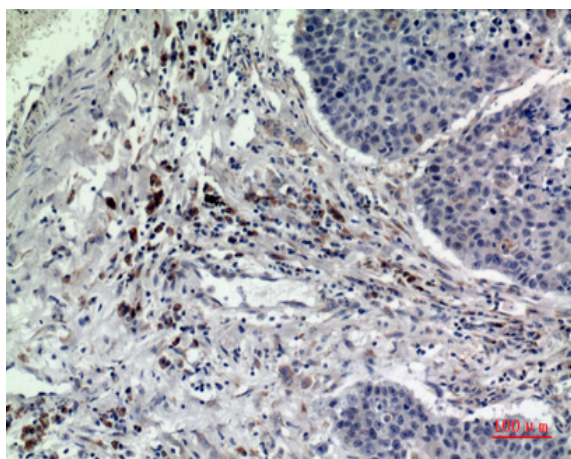
Catalog No :	YT5456
Reactivity :	Human;Mouse;Rat
Applications :	WB;IHC;IF;ELISA
Target :	Rab 5A
Fields :	>>Ras signaling pathway;>>Endocytosis;>>Phagosome;>>Vasopressin-regulated water reabsorption;>>Amyotrophic lateral sclerosis;>>Pathways of neurodegeneration - multiple diseases;>>Salmonella infection;>>Amoebiasis;>>Tuberculosis
Gene Name :	RAB5A
Protein Name :	Ras-related protein Rab-5A
Human Gene Id :	5868
Human Swiss Prot No :	P20339
Mouse Gene Id :	271457
Mouse Swiss Prot No :	Q9CQD1
Immunogen :	The antiserum was produced against synthesized peptide derived from the Internal region of human RAB5A. AA range:71-120
Specificity :	Rab 5A Polyclonal Antibody detects endogenous levels of Rab 5A protein.
Formulation :	Liquid in PBS containing 50% glycerol, 0.5% BSA and 0.02% sodium azide.
Source :	Polyclonal, Rabbit,IgG
Dilution :	WB 1:500 - 1:2000. IHC: 1:100-1:300. ELISA: 1:20000.. IF 1:50-200
Purification :	The antibody was affinity-purified from rabbit antiserum by affinity-chromatography using epitope-specific immunogen.

Concentration :	1 mg/ml
Storage Stability :	-15°C to -25°C/1 year(Do not lower than -25°C)
Observed Band :	24kD
Cell Pathway :	Endocytosis;Amyotrophic lateral sclerosis (ALS);
Background :	enzyme regulation:Regulated by guanine nucleotide exchange factors (GEFs) which promote the exchange of bound GDP for free GTP.,function:Required for the fusion of plasma membranes and early endosomes.,similarity:Belongs to the small GTPase superfamily. Rab family.,subcellular location:Enriched in stage I melanosomes.,subunit:Binds EEA1. Interacts with RIN1 and GAPVD1, which regulate its pathway, probably by acting as a GEF. Interacts with ALS2CL, UNC84B, ZFYVE20 and RUFY1. Interacts with SGSM1 and SGSM3.,
Function :	enzyme regulation:Regulated by guanine nucleotide exchange factors (GEFs) which promote the exchange of bound GDP for free GTP.,function:Required for the fusion of plasma membranes and early endosomes.,similarity:Belongs to the small GTPase superfamily. Rab family.,subcellular location:Enriched in stage I melanosomes.,subunit:Binds EEA1. Interacts with RIN1 and GAPVD1, which regulate its pathway, probably by acting as a GEF. Interacts with ALS2CL, UNC84B, ZFYVE20 and RUFY1. Interacts with SGSM1 and SGSM3.,
Subcellular Location :	Cell membrane ; Lipid-anchor ; Cytoplasmic side . Early endosome membrane ; Lipid-anchor . Melanosome . Cytoplasmic vesicle . Cell projection, ruffle . Membrane . Cytoplasm, cytosol . Cytoplasmic vesicle, phagosome membrane . Endosome membrane . Enriched in stage I melanosomes (PubMed:17081065). Alternates between membrane-bound and cytosolic forms (Probable) .
Expression :	Brain,Cervix,Cervix carcinoma,Placenta,
Sort :	13231
No4 :	1
Host :	Rabbit
Modifications :	Unmodified

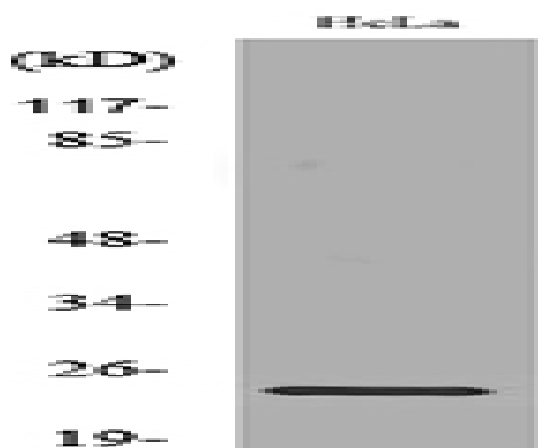
Products Images



Western Blot analysis of HeLa cells using Rab 5A Polyclonal Antibody. Secondary antibody(catalog#:RS0002) was diluted at 1:20000



Immunohistochemical analysis of paraffin-embedded human lung, antibody was diluted at 1:100



Western blot analysis of lysate from HeLa cells, using RAB5A Antibody.