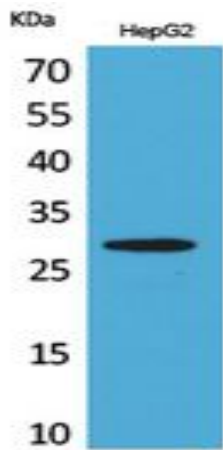


CD69 Polyclonal Antibody

Catalog No :	YT5463
Reactivity :	Human;Mouse;Rat
Applications :	WB;ELISA
Target :	CD69
Gene Name :	CD69
Protein Name :	Early activation antigen CD69
Human Gene Id :	969
Human Swiss Prot No :	Q07108
Mouse Gene Id :	12515
Mouse Swiss Prot No :	P37217
Immunogen :	The antiserum was produced against synthesized peptide derived from the Internal region of human CD69. AA range:91-140
Specificity :	CD69 Polyclonal Antibody detects endogenous levels of CD69 protein.
Formulation :	Liquid in PBS containing 50% glycerol, 0.5% BSA and 0.02% sodium azide.
Source :	Polyclonal, Rabbit,IgG
Dilution :	WB 1:500 - 1:2000. ELISA: 1:20000. Not yet tested in other applications.
Purification :	The antibody was affinity-purified from rabbit antiserum by affinity-chromatography using epitope-specific immunogen.
Concentration :	1 mg/ml
Storage Stability :	-15°C to -25°C/1 year(Do not lower than -25°C)

Observed Band :	25kD
Background :	This gene encodes a member of the calcium dependent lectin superfamily of type II transmembrane receptors. Expression of the encoded protein is induced upon activation of T lymphocytes, and may play a role in proliferation. Furthermore, the protein may act to transmit signals in natural killer cells and platelets. [provided by RefSeq, Aug 2011],
Function :	developmental stage:Earliest inducible cell surface glycoprotein acquired during lymphoid activation.,function:Involved in lymphocyte proliferation and functions as a signal transmitting receptor in lymphocytes, natural killer (NK) cells, and platelets.,induction:By antigens, mitogens or activators of PKC on the surface of T and B-lymphocytes. By interaction of IL-2 with the p75 IL-2R on the surface of NK cells.,online information:CD69,PTM:Constitutive Ser/Thr phosphorylation in both mature thymocytes and activated T-lymphocytes.,similarity:Contains 1 C-type lectin domain.,subunit:Homodimer; disulfide-linked.,tissue specificity:Expressed on the surface of activated T-cells, B-cells, natural killer cells, neutrophils, eosinophils, epidermal Langerhans cells and platelets.,
Subcellular Location :	Membrane; Single-pass type II membrane protein.
Expression :	Expressed on the surface of activated T-cells, B-cells, natural killer cells, neutrophils, eosinophils, epidermal Langerhans cells and platelets.
Sort :	3649
No4 :	1
Host :	Rabbit
Modifications :	Unmodified

Products Images



Western Blot analysis of HepG2 cells using CD69 Polyclonal Antibody. Secondary antibody(catalog#:RS0002) was diluted at 1:20000