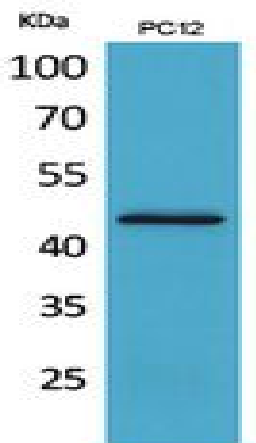


IL-1RII Polyclonal Antibody

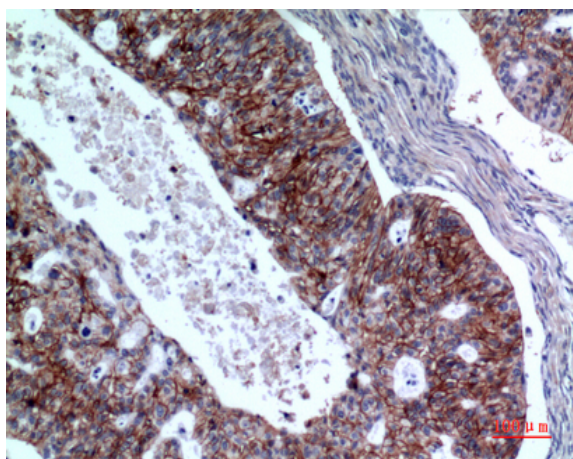
Catalog No :	YT5470
Reactivity :	Human;Rat;Mouse;
Applications :	WB;IHC;IF;ELISA
Target :	IL-1RII
Fields :	>>Cytokine-cytokine receptor interaction;>>Hematopoietic cell lineage;>>Amoebiasis;>>Human T-cell leukemia virus 1 infection;>>Transcriptional misregulation in cancer;>>Prostate cancer;>>Fluid shear stress and atherosclerosis
Gene Name :	IL1R2
Protein Name :	Interleukin-1 receptor type 2
Human Gene Id :	7850
Human Swiss Prot No :	P27930
Mouse Swiss Prot No :	P27931
Immunogen :	The antiserum was produced against synthesized peptide derived from the Internal region of human IL1R2. AA range:141-190
Specificity :	IL-1RII Polyclonal Antibody detects endogenous levels of IL-1RII protein.
Formulation :	Liquid in PBS containing 50% glycerol, 0.5% BSA and 0.02% sodium azide.
Source :	Polyclonal, Rabbit,IgG
Dilution :	WB 1:500 - 1:2000. IHC: 1:100-1:300. ELISA: 1:20000.. IF 1:50-200
Purification :	The antibody was affinity-purified from rabbit antiserum by affinity-chromatography using epitope-specific immunogen.
Concentration :	1 mg/ml

Storage Stability :	-15°C to -25°C/1 year(Do not lower than -25°C)
Observed Band :	43kD
Cell Pathway :	MAPK_ERK_Growth;MAPK_G_Protein;Cytokine-cytokine receptor interaction;Hematopoietic cell lineage;
Background :	The protein encoded by this gene is a cytokine receptor that belongs to the interleukin 1 receptor family. This protein binds interleukin alpha (IL1A), interleukin beta (IL1B), and interleukin 1 receptor, type I(IL1R1/IL1RA), and acts as a decoy receptor that inhibits the activity of its ligands. Interleukin 4 (IL4) is reported to antagonize the activity of interleukin 1 by inducing the expression and release of this cytokine. This gene and three other genes form a cytokine receptor gene cluster on chromosome 2q12. Alternative splicing results in multiple transcript variants and protein isoforms. Alternative splicing produces both membrane-bound and soluble proteins. A soluble protein is also produced by proteolytic cleavage. [provided by RefSeq, May 2012],
Function :	function:Receptor for interleukin-1 alpha (IL-1A), beta (IL-1B), and interleukin-1 receptor antagonist protein (IL-1ra).,similarity:Belongs to the interleukin-1 receptor family.,similarity:Contains 3 Ig-like C2-type (immunoglobulin-like) domains.,
Subcellular Location :	[Isoform Short]: Secreted .; [Isoform Long]: Cell membrane; Single-pass type I membrane protein.
Expression :	B-cell,Colon,Ovary,
Sort :	8474
No4 :	1
Host :	Rabbit
Modifications :	Unmodified

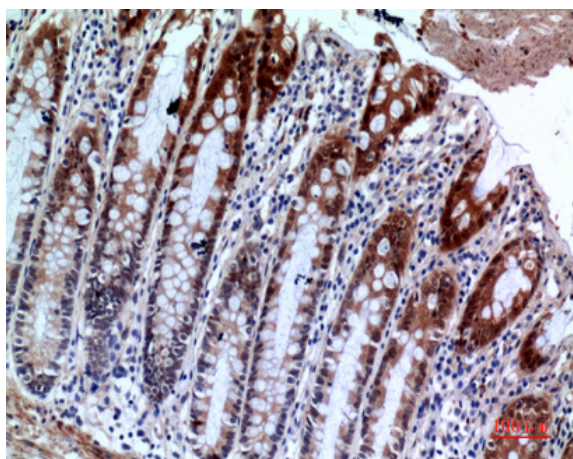
Products Images



Western Blot analysis of PC12 cells using IL-1RII Polyclonal Antibody. Secondary antibody(catalog#:RS0002) was diluted at 1:20000



Immunohistochemical analysis of paraffin-embedded human-Ovarian-cancer, antibody was diluted at 1:100



Immunohistochemical analysis of paraffin-embedded human-colon, antibody was diluted at 1:100