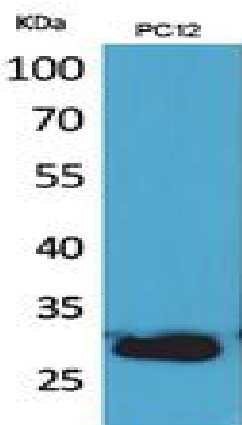


## CD200 Polyclonal Antibody

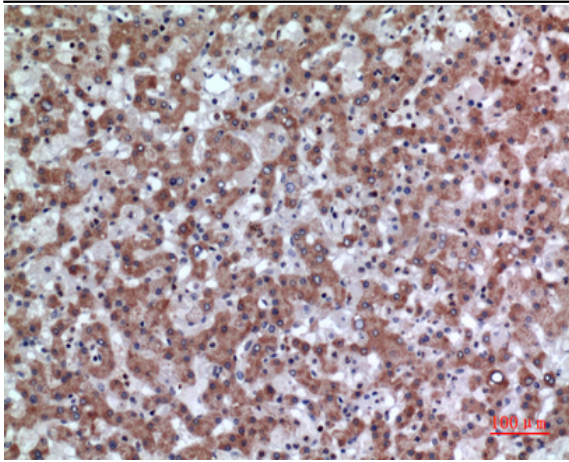
|                              |  |
|------------------------------|--|
| <b>Catalog No :</b>          | YT5474   |
| <b>Reactivity :</b>          | Human;Rat;Mouse;   |
| <b>Applications :</b>        | WB;IHC;IF;ELISA  |
| <b>Target :</b>              | CD200  |
| <b>Gene Name :</b>           | CD200  |
| <b>Protein Name :</b>        | OX-2 membrane glycoprotein   |
| <b>Human Gene Id :</b>       | 4345   |
| <b>Human Swiss Prot No :</b> | P41217   |
| <b>Mouse Swiss Prot No :</b> | O54901   |
| <b>Rat Swiss Prot No :</b>   | P04218   |
| <b>Immunogen :</b>           | The antiserum was produced against synthesized peptide derived from the Internal region of human CD200. AA range:171-220 |
| <b>Specificity :</b>         | CD200 Polyclonal Antibody detects endogenous levels of CD200 protein.  |
| <b>Formulation :</b>         | Liquid in PBS containing 50% glycerol, 0.5% BSA and 0.02% sodium azide.  |
| <b>Source :</b>              | Polyclonal, Rabbit,IgG   |
| <b>Dilution :</b>            | WB 1:500 - 1:2000. IHC: 1:100-1:300. ELISA: 1:20000.. IF 1:50-200  |
| <b>Purification :</b>        | The antibody was affinity-purified from rabbit antiserum by affinity-chromatography using epitope-specific immunogen.    |
| <b>Concentration :</b>       | 1 mg/ml  |
| <b>Storage Stability :</b>   | -15°C to -25°C/1 year(Do not lower than -25°C)   |

**Observed Band :** 31kD**Background :** This gene encodes a type I membrane glycoprotein containing two extracellular immunoglobulin domains, a transmembrane and a cytoplasmic domain. This gene is expressed by various cell types, including B cells, a subset of T cells, thymocytes, endothelial cells, and neurons. The encoded protein plays an important role in immunosuppression and regulation of anti-tumor activity. Alternative splicing results in multiple transcript variants encoding different isoforms. [provided by RefSeq, Jan 2016],**Function :** function:Costimulates T-cell proliferation. May regulate myeloid cell activity in a variety of tissues.,similarity:Contains 1 Ig-like C2-type (immunoglobulin-like) domain.,similarity:Contains 1 Ig-like V-type (immunoglobulin-like) domain.,subunit:Interacts with CD200R1.,**Subcellular Location :** Cell membrane; Single-pass type I membrane protein.**Expression :** Blood,Brain,Fetal brain,**Sort :** 3450**No4 :** 1**Host :** Rabbit**Modifications :** Unmodified

## Products Images



Western Blot analysis of PC12 cells using CD200 Polyclonal Antibody. Secondary antibody(catalog#:RS0002) was diluted at 1:20000



Immunohistochemical analysis of paraffin-embedded human-liver, antibody was diluted at 1:100