

## CMTM5 Polyclonal Antibody

<b>Catalog No :</b>	YT5485
<b>Reactivity :</b>	Human;Mouse
<b>Applications :</b>	WB;IHC;IF;ELISA
<b>Target :</b>	CMTM5
<b>Gene Name :</b>	CMTM5
<b>Protein Name :</b>	CKLF-like MARVEL transmembrane domain-containing protein 5
<b>Human Gene Id :</b>	116173
<b>Human Swiss Prot No :</b>	Q96DZ9
<b>Mouse Gene Id :</b>	67272
<b>Mouse Swiss Prot No :</b>	Q9D6G9
<b>Immunogen :</b>	The antiserum was produced against synthesized peptide derived from the N-terminal region of human CMTM5. AA range:1-50
<b>Specificity :</b>	CMTM5 Polyclonal Antibody detects endogenous levels of CMTM5 protein.
<b>Formulation :</b>	Liquid in PBS containing 50% glycerol, 0.5% BSA and 0.02% sodium azide.
<b>Source :</b>	Polyclonal, Rabbit,IgG
<b>Dilution :</b>	WB 1:500 - 1:2000. IHC: 1:100-1:300. ELISA: 1:20000.. IF 1:50-200
<b>Purification :</b>	The antibody was affinity-purified from rabbit antiserum by affinity-chromatography using epitope-specific immunogen.
<b>Concentration :</b>	1 mg/ml
<b>Storage Stability :</b>	-15°C to -25°C/1 year(Do not lower than -25°C)

**Observed Band :** 25kD

**Background :** This gene encodes a member of the chemokine-like factor superfamily. This family of genes encodes multi-pass membrane proteins that are similar to both the chemokine and the transmembrane 4 superfamilies of signaling molecules. The encoded protein may exhibit tumor suppressor activity. Alternative splicing results in multiple transcript variants. [provided by RefSeq, Jan 2014],

**Function :** similarity:Belongs to the chemokine-like factor family.,similarity:Contains 1 MARVEL domain.,tissue specificity:Highly expressed in the brain.,

**Subcellular Location :** Membrane; Multi-pass membrane protein.

**Expression :** Highly expressed in the brain.

**Sort :** 4306

**No4 :** 1

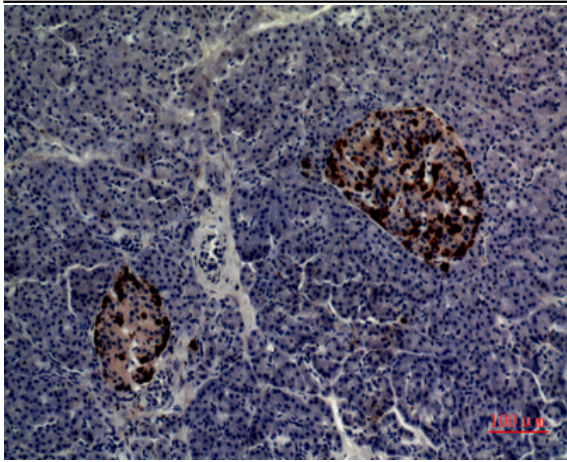
**Host :** Rabbit

**Modifications :** Unmodified

## Products Images



Western Blot analysis of PC12 cells using CMTM5 Polyclonal Antibody. Secondary antibody(catalog#:RS0002) was diluted at 1:20000



Immunohistochemical analysis of paraffin-embedded human-pancreas, antibody was diluted at 1:100