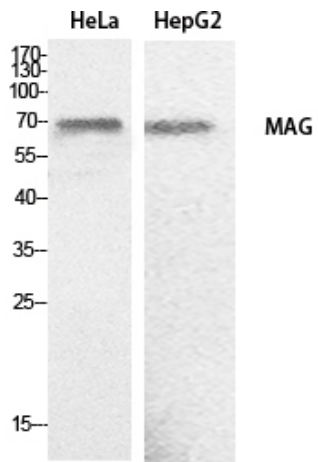


MAG Polyclonal Antibody

Catalog No :	YT5517
Reactivity :	Human;Mouse;Rat
Applications :	WB;ELISA
Target :	MAG
Fields :	>>Cell adhesion molecules
Gene Name :	MAG
Protein Name :	Myelin-associated glycoprotein
Human Gene Id :	4099
Human Swiss Prot No :	P20916
Mouse Gene Id :	17136
Mouse Swiss Prot No :	P20917
Rat Gene Id :	29409
Rat Swiss Prot No :	P07722
Immunogen :	The antiserum was produced against synthesized peptide derived from the C-terminal region of human MAG. AA range:501-550
Specificity :	MAG Polyclonal Antibody detects endogenous levels of MAG protein.
Formulation :	Liquid in PBS containing 50% glycerol, 0.5% BSA and 0.02% sodium azide.
Source :	Polyclonal, Rabbit,IgG
Dilution :	WB 1:500 - 1:2000. ELISA: 1:20000. Not yet tested in other applications.

Purification :	The antibody was affinity-purified from rabbit antiserum by affinity-chromatography using epitope-specific immunogen.
Concentration :	1 mg/ml
Storage Stability :	-15°C to -25°C/1 year(Do not lower than -25°C)
Observed Band :	70kD
Cell Pathway :	Cell adhesion molecules (CAMs);
Background :	The protein encoded by this gene is a type I membrane protein and member of the immunoglobulin superfamily. It is thought to be involved in the process of myelination. It is a lectin that binds to sialylated glycoconjugates and mediates certain myelin-neuron cell-cell interactions. Three alternatively spliced transcripts encoding different isoforms have been described for this gene. [provided by RefSeq, Nov 2010],
Function :	function:Adhesion molecule in postnatal neural development that mediates sialic-acid dependent cell-cell interactions between neuronal and myelinating cells. Preferentially binds to alpha-2,3-linked sialic acid.,online information:Siglec-4,similarity:Belongs to the immunoglobulin superfamily. SIGLEC (sialic acid binding Ig-like lectin) family.,similarity:Contains 1 Ig-like V-type (immunoglobulin-like) domain.,similarity:Contains 4 Ig-like C2-type (immunoglobulin-like) domains.,subunit:Binds to RTN4R.,
Subcellular Location :	Cell membrane ; Single-pass type I membrane protein . Membrane raft .
Expression :	Both isoform 1 and isoform 2 are detected in myelinated structures in the central and peripheral nervous system, in periaxonal myelin and at Schmidt-Lanterman incisures (PubMed:9495552, PubMed:6200494). Detected in optic nerve, in oligodendroglia and in periaxonal myelin sheaths (PubMed:6200494). Detected in compact myelin (at protein level) (PubMed:6200494). Both isoform 1 and isoform 2 are detected in the central and peripheral nervous system (PubMed:9495552).
Sort :	9333
No4 :	1
Host :	Rabbit
Modifications :	Unmodified

Products Images



Western Blot analysis of HeLa, HepG2 cells using MAG Polyclonal Antibody. Secondary antibody(catalog#:RS0002) was diluted at 1:20000