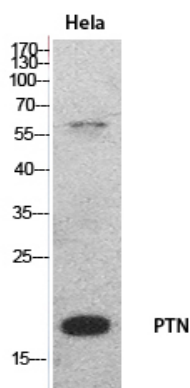


PTN Polyclonal Antibody

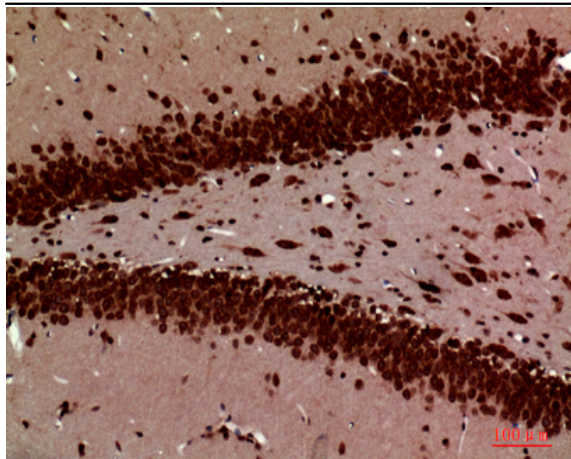
Catalog No :	YT5519
Reactivity :	Human;Mouse;Rat
Applications :	WB;IHC;IF;ELISA
Target :	PTN
Gene Name :	PTN
Protein Name :	Pleiotrophin
Human Gene Id :	5764
Human Swiss Prot No :	P21246
Mouse Gene Id :	19242
Mouse Swiss Prot No :	P63089
Rat Gene Id :	24924
Rat Swiss Prot No :	P63090
Immunogen :	The antiserum was produced against synthesized peptide derived from the Internal region of human PTN. AA range:1-50
Specificity :	PTN Polyclonal Antibody detects endogenous levels of PTN protein.
Formulation :	Liquid in PBS containing 50% glycerol, 0.5% BSA and 0.02% sodium azide.
Source :	Polyclonal, Rabbit,IgG
Dilution :	WB 1:500 - 1:2000. IHC: 1:100-1:300. ELISA: 1:20000.. IF 1:50-200
Purification :	The antibody was affinity-purified from rabbit antiserum by affinity-chromatography using epitope-specific immunogen.

Concentration :	1 mg/ml
Storage Stability :	-15°C to -25°C/1 year(Do not lower than -25°C)
Observed Band :	19kD
Background :	function:Heparin binding mitogenic protein. Has neurite extension activity.,induction:By heparin and retinoic acid.,online information:Pleiotrophin entry,similarity:Belongs to the pleiotrophin family.,tissue specificity:Osteoblast and brain.,
Function :	function:Heparin binding mitogenic protein. Has neurite extension activity.,induction:By heparin and retinoic acid.,online information:Pleiotrophin entry,similarity:Belongs to the pleiotrophin family.,tissue specificity:Osteoblast and brain.,
Subcellular Location :	Secreted .
Expression :	Osteoblast and brain.
Sort :	13155
No4 :	1
Host :	Rabbit
Modifications :	Unmodified

Products Images



Western Blot analysis of HeLa cells using PTN Polyclonal Antibody. Secondary antibody(catalog#:RS0002) was diluted at 1:20000



Immunohistochemical analysis of paraffin-embedded rat-brain, antibody was diluted at 1:100