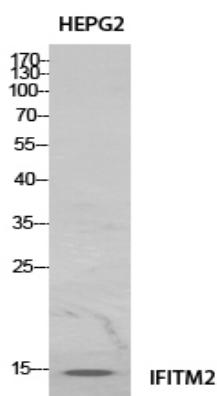


IFITM2 Polyclonal Antibody

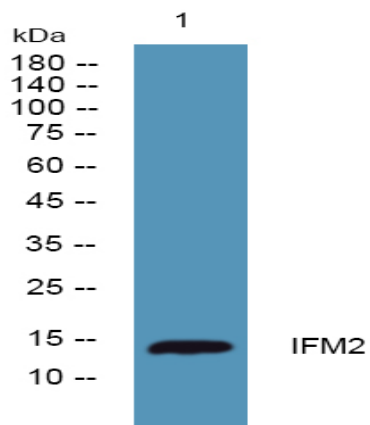
Catalog No :	YT5532
Reactivity :	Human;Mouse
Applications :	WB;ELISA
Target :	IFITM2
Gene Name :	IFITM2
Protein Name :	Interferon-induced transmembrane protein 2
Human Gene Id :	10581
Human Swiss Prot No :	Q01629
Mouse Gene Id :	80876
Mouse Swiss Prot No :	Q99J93
Immunogen :	The antiserum was produced against synthesized peptide derived from the Internal region of human IFITM2. AA range:1-50
Specificity :	IFITM2 Polyclonal Antibody detects endogenous levels of IFITM2 protein.
Formulation :	Liquid in PBS containing 50% glycerol, 0.5% BSA and 0.02% sodium azide.
Source :	Polyclonal, Rabbit,IgG
Dilution :	WB 1:500 - 1:2000. ELISA: 1:20000. Not yet tested in other applications.
Purification :	The antibody was affinity-purified from rabbit antiserum by affinity-chromatography using epitope-specific immunogen.
Concentration :	1 mg/ml
Storage Stability :	-15°C to -25°C/1 year(Do not lower than -25°C)

Observed Band :	15kD
Background :	induction:By alpha and gamma interferons.,similarity:Belongs to the CD225 family.,
Function :	induction:By alpha and gamma interferons.,similarity:Belongs to the CD225 family.,
Subcellular Location :	Cell membrane ; Single-pass type II membrane protein . Lysosome membrane ; Single-pass type II membrane protein . Late endosome membrane ; Single-pass type II membrane protein .
Expression :	Lung,
Tag :	hot
Sort :	8322
No4 :	1
Host :	Rabbit
Modifications :	Unmodified

Products Images



Western Blot analysis of HeLa cells using IFITM2 Polyclonal Antibody. Antibody was diluted at 1:1000. Secondary antibody(catalog#:RS0002) was diluted at 1:20000



Western blot analysis of lysates from SW480 cells, primary antibody was diluted at 1:1000, 4° over night