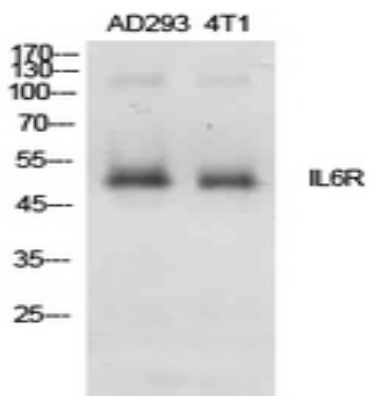


IL-6R α Polyclonal Antibody

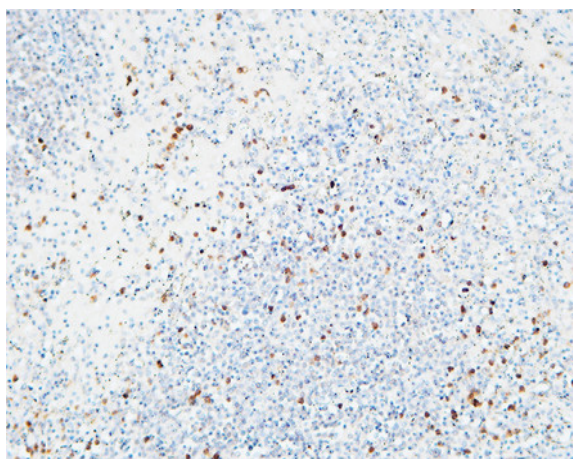
Catalog No :	YT5546
Reactivity :	Human;Rat
Applications :	WB;IHC;IF;ELISA
Target :	IL-6R α
Fields :	>>EGFR tyrosine kinase inhibitor resistance;>>Cytokine-cytokine receptor interaction;>>Viral protein interaction with cytokine and cytokine receptor;>>HIF-1 signaling pathway;>>PI3K-Akt signaling pathway;>>JAK-STAT signaling pathway;>>Hematopoietic cell lineage;>>Th17 cell differentiation;>>Non-alcoholic fatty liver disease;>>Human cytomegalovirus infection;>>Coronavirus disease - COVID-19;>>Pathways in cancer
Gene Name :	IL6R
Protein Name :	Interleukin-6 receptor subunit alpha
Human Gene Id :	3570
Human Swiss Prot No :	P08887
Mouse Swiss Prot No :	P22272
Immunogen :	The antiserum was produced against synthesized peptide derived from the Internal region of human IL6R. AA range:221-270
Specificity :	IL-6R α Polyclonal Antibody detects endogenous levels of IL-6R α protein.
Formulation :	Liquid in PBS containing 50% glycerol, 0.5% BSA and 0.02% sodium azide.
Source :	Polyclonal, Rabbit,IgG
Dilution :	IHC: 100-300.WB 1:500 - 1:2000. ELISA: 1:10000.. IF 1:50-200
Purification :	The antibody was affinity-purified from rabbit antiserum by affinity-chromatography using epitope-specific immunogen.

Concentration :	1 mg/ml
Storage Stability :	-15°C to -25°C/1 year(Do not lower than -25°C)
Observed Band :	53kD
Cell Pathway :	Cytokine-cytokine receptor interaction;Jak_STAT;Hematopoietic cell lineage;
Background :	<p>This gene encodes a subunit of the interleukin 6 (IL6) receptor complex. Interleukin 6 is a potent pleiotropic cytokine that regulates cell growth and differentiation and plays an important role in the immune response. The IL6 receptor is a protein complex consisting of this protein and interleukin 6 signal transducer (IL6ST/GP130/IL6-beta), a receptor subunit also shared by many other cytokines. Dysregulated production of IL6 and this receptor are implicated in the pathogenesis of many diseases, such as multiple myeloma, autoimmune diseases and prostate cancer. Alternatively spliced transcript variants encoding distinct isoforms have been reported. A pseudogene of this gene is found on chromosome 9.[provided by RefSeq, May 2011],</p>
Function :	<p>domain:The two fibronectin type-III-like domains, contained in the N-terminal part, form together a cytokine-binding domain.,domain:The WSXWS motif appears to be necessary for proper protein folding and thereby efficient intracellular transport and cell-surface receptor binding.,function:Low concentration of a soluble form of IL6 receptor acts as an agonist of IL6 activity.,function:Part of the receptor for interleukin 6. Binds to IL6 with low affinity, but does not transduce a signal. Signal activation necessitate an association with IL6ST. Activation may lead to the regulation of the immune response, acute-phase reactions and hematopoiesis.,PTM:A short soluble form may also be released from the membrane by proteolysis.,similarity:Belongs to the type I cytokine receptor family. Type 3 subfamily.,similarity:Contains 1 fibronectin type-III domain.,similarity:Contains 1 Ig-like C2-type (im</p>
Subcellular Location :	[Isoform 1]: Cell membrane ; Single-pass type I membrane protein .; [Isoform 2]: Secreted .; [Soluble interleukin-6 receptor subunit alpha]: Secreted .
Expression :	[Isoform 2]: Expressed in peripheral blood mononuclear cells and weakly found in urine and serum. 1%-20% of the total sIL6R in plasma is generated by alternative splicing (PubMed:28060820).
Sort :	8525
No4 :	1
Host :	Rabbit
Modifications :	Unmodified

Products Images



Western Blot analysis of AD293, 4T1 cells using IL-6R α Polyclonal Antibody. Secondary antibody(catalog#:RS0002) was diluted at 1:20000



Immunohistochemical analysis of paraffin-embedded Human spleen. 1, Antibody was diluted at 1:200(4° overnight). 2, High-pressure and temperature EDTA, pH8.0 was used for antigen retrieval. 3,Secondary antibody was diluted at 1:200(room temperature, 30min).