

## CD6 Polyclonal Antibody

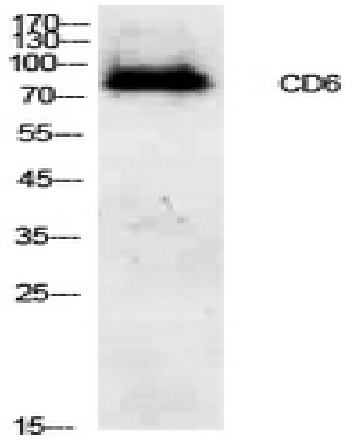
<b>Catalog No :</b>	YT5577
<b>Reactivity :</b>	Human;Mouse
<b>Applications :</b>	WB;IHC;IF;ELISA
<b>Target :</b>	CD6
<b>Fields :</b>	>>Cell adhesion molecules
<b>Gene Name :</b>	CD6
<b>Protein Name :</b>	T-cell differentiation antigen CD6
<b>Human Gene Id :</b>	923
<b>Human Swiss Prot No :</b>	P30203
<b>Mouse Swiss Prot No :</b>	Q61003
<b>Immunogen :</b>	The antiserum was produced against synthesized peptide derived from the Internal region of human CD6. AA range:361-410
<b>Specificity :</b>	CD6 Polyclonal Antibody detects endogenous levels of CD6 protein.
<b>Formulation :</b>	Liquid in PBS containing 50% glycerol, 0.5% BSA and 0.02% sodium azide.
<b>Source :</b>	Polyclonal, Rabbit,IgG
<b>Dilution :</b>	WB 1:500 - 1:2000. IHC: 1:100-1:300. ELISA: 1:10000.. IF 1:50-200
<b>Purification :</b>	The antibody was affinity-purified from rabbit antiserum by affinity-chromatography using epitope-specific immunogen.
<b>Concentration :</b>	1 mg/ml
<b>Storage Stability :</b>	-15°C to -25°C/1 year(Do not lower than -25°C)

---

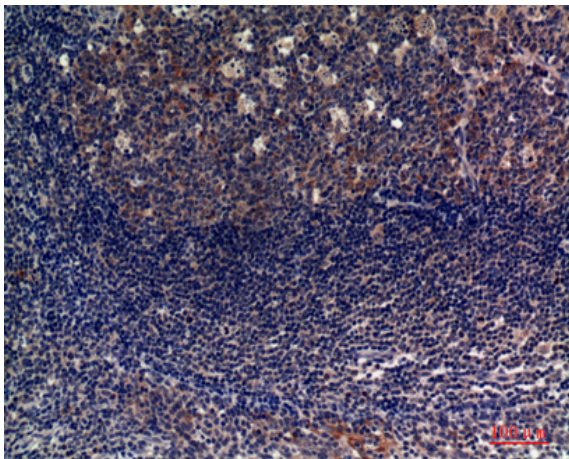
<b>Observed Band :</b>	73kD
<b>Cell Pathway :</b>	Cell adhesion molecules (CAMs);
<b>Background :</b>	This gene encodes a protein found on the outer membrane of T-lymphocytes as well as some other immune cells. The encoded protein contains three scavenger receptor cysteine-rich (SRCR) domains and a binding site for an activated leukocyte cell adhesion molecule. The gene product is important for continuation of T cell activation. This gene may be associated with susceptibility to multiple sclerosis (PMID: 19525953, 21849685). Multiple transcript variants encoding different isoforms have been found for this gene. [provided by RefSeq, Dec 2011],
<b>Function :</b>	function:Involved in cell adhesion. Binds to CD166.,PTM:After T-cell activation, becomes hyperphosphorylated on Ser and Thr residues and phosphorylated on Tyr residues.,PTM:Contains intrachain disulfide bond(s).,similarity:Contains 3 SRCR domains.,tissue specificity:Expressed by thymocytes, mature T-cells, a subset of B-cells known as B-1 cells, and by some cells in the brain.,
<b>Subcellular Location :</b>	Cell membrane ; Single-pass type I membrane protein . Detected at the immunological synapse, i.e, at the contact zone between antigen-presenting dendritic cells and T-cells (PubMed:15294938, PubMed:16352806). Colocalizes with the TCR/CD3 complex at the immunological synapse (PubMed:15294938). . ; [Soluble CD6]: Secreted . The origins of the secreted form are not clear, but it might be created by proteolytic shedding of the ectodomain. .
<b>Expression :</b>	Detected on thymocytes (PubMed:15294938). Detected on peripheral blood T-cells (PubMed:15048703, PubMed:16352806). Detected on natural killer (NK) cells (PubMed:16352806). Soluble CD6 is detected in blood serum (at protein level) (PubMed:17601777). Detected in spleen, thymus, appendix, lymph node and peripheral blood leukocytes (PubMed:9013954). Expressed by thymocytes, mature T-cells, a subset of B-cells known as B-1 cells, and by some cells in the brain.
<b>Sort :</b>	3625
<b>No4 :</b>	1
<b>Host :</b>	Rabbit
<b>Modifications :</b>	Unmodified

---

## Products Images



Western Blot analysis of 293 cells using CD6 Polyclonal Antibody. Secondary antibody(catalog#:RS0002) was diluted at 1:20000



Immunohistochemical analysis of paraffin-embedded human tonsils, antibody was diluted at 1:100