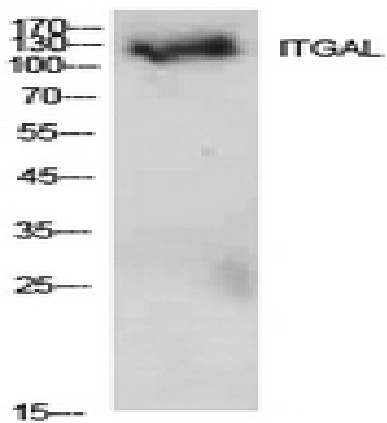


## Integrin $\alpha$ L Polyclonal Antibody

<b>Catalog No :</b>	YT5578
<b>Reactivity :</b>	Human;Mouse
<b>Applications :</b>	WB;ELISA
<b>Target :</b>	Integrin $\alpha$ L
<b>Fields :</b>	>>Rap1 signaling pathway;>>Cell adhesion molecules;>>Neutrophil extracellular trap formation;>>Natural killer cell mediated cytotoxicity;>>Leukocyte transendothelial migration;>>Regulation of actin cytoskeleton;>>Malaria;>>Staphylococcus aureus infection;>>Human T-cell leukemia virus 1 infection;>>Epstein-Barr virus infection;>>Rheumatoid arthritis;>>Viral myocarditis
<b>Gene Name :</b>	ITGAL
<b>Protein Name :</b>	Integrin alpha-L
<b>Human Gene Id :</b>	3683
<b>Human Swiss Prot No :</b>	P20701
<b>Mouse Swiss Prot No :</b>	P24063
<b>Immunogen :</b>	The antiserum was produced against synthesized peptide derived from the Internal region of human ITGAL. AA range:171-220
<b>Specificity :</b>	Integrin $\alpha$ L Polyclonal Antibody detects endogenous levels of Integrin $\alpha$ L protein.
<b>Formulation :</b>	Liquid in PBS containing 50% glycerol, 0.5% BSA and 0.02% sodium azide.
<b>Source :</b>	Polyclonal, Rabbit,IgG
<b>Dilution :</b>	WB 1:500 - 1:2000. ELISA: 1:10000. Not yet tested in other applications.
<b>Purification :</b>	The antibody was affinity-purified from rabbit antiserum by affinity-chromatography using epitope-specific immunogen.

<b>Concentration :</b>	1 mg/ml
<b>Storage Stability :</b>	-15°C to -25°C/1 year(Do not lower than -25°C)
<b>Observed Band :</b>	130kD
<b>Cell Pathway :</b>	Cell adhesion molecules (CAMs);Natural killer cell mediated cytotoxicity;Leukocyte transendothelial migration;Regulates Actin and Cytoskeleton;Viral myocarditis;
<b>Background :</b>	integrin subunit alpha L(ITGAL) Homo sapiens ITGAL encodes the integrin alpha L chain. Integrins are heterodimeric integral membrane proteins composed of an alpha chain and a beta chain. This I-domain containing alpha integrin combines with the beta 2 chain (ITGB2) to form the integrin lymphocyte function-associated antigen-1 (LFA-1), which is expressed on all leukocytes. LFA-1 plays a central role in leukocyte intercellular adhesion through interactions with its ligands, ICAMs 1-3 (intercellular adhesion molecules 1 through 3), and also functions in lymphocyte costimulatory signaling. Two transcript variants encoding different isoforms have been found for this gene. [provided by RefSeq, Jul 2008],
<b>Function :</b>	domain:The integrin I-domain (insert) is a VWFA domain. Integrins with I-domains do not undergo protease cleavage.,function:Integrin alpha-L/beta-2 is a receptor for ICAM1, ICAM2, ICAM3 and ICAM4. It is involved in a variety of immune phenomena including leukocyte-endothelial cell interaction, cytotoxic T-cell mediated killing, and antibody dependent killing by granulocytes and monocytes.,similarity:Belongs to the integrin alpha chain family.,similarity:Contains 1 VWFA domain.,similarity:Contains 7 FG-GAP repeats.,subunit:Heterodimer of an alpha and a beta subunit. Alpha-L associates with beta-2.,tissue specificity:Leukocytes.,
<b>Subcellular Location :</b>	Cell membrane ; Single-pass type I membrane protein .
<b>Expression :</b>	Leukocytes.
<b>Sort :</b>	8610
<b>No4 :</b>	1
<b>Host :</b>	Rabbit
<b>Modifications :</b>	Unmodified

## Products Images



Western Blot analysis of 293 cells using Integrin αL Polyclonal Antibody. Secondary antibody(catalog#:RS0002) was diluted at 1:20000